

COUNTRY HOT TOPICS

GOFC-GOLD Network: SCERIN / MedRIN Country: Lebanon

Joint Workshop of the GOFC-GOLD SCERIN and MedRIN Networks

CIHEAM conference center, Chania, Greece, July 16 – July 19, 2024

Land Cover Change (LCC) and Extreme Events in the Context of Climate Change

Mediterranean Agronomic Institute of Chania
Region of Crete
Eratosthenes Center of Excellence, Cyprus University of Technology
Aristotle University of Thessaloniki
NASA LCLUC Program
GOFC-GOLD and START, USA



Remote Sensing priorities or 'hot topics'

Forest and Land Management:

- Tracking deforestation and reforestation efforts.
- Monitoring forest health and detecting illegal logging.
- Assessing land degradation and desertification.

Disaster Management and Risk Assessment:

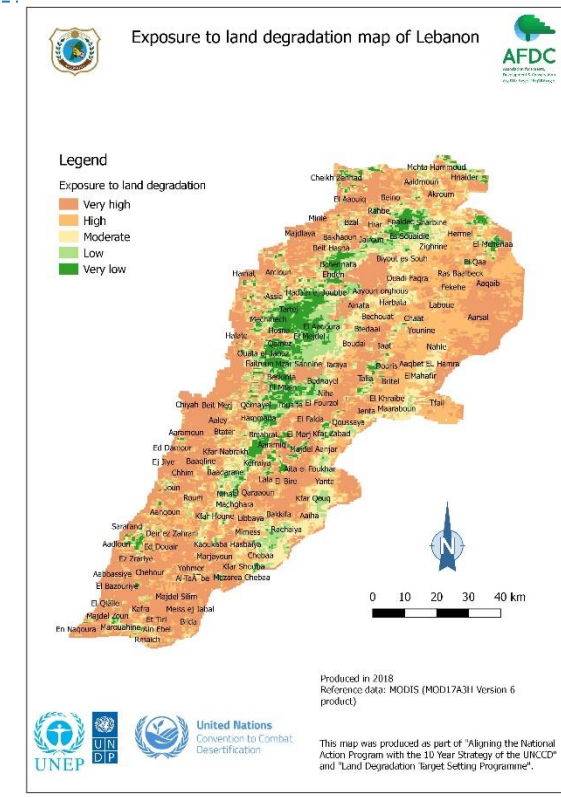
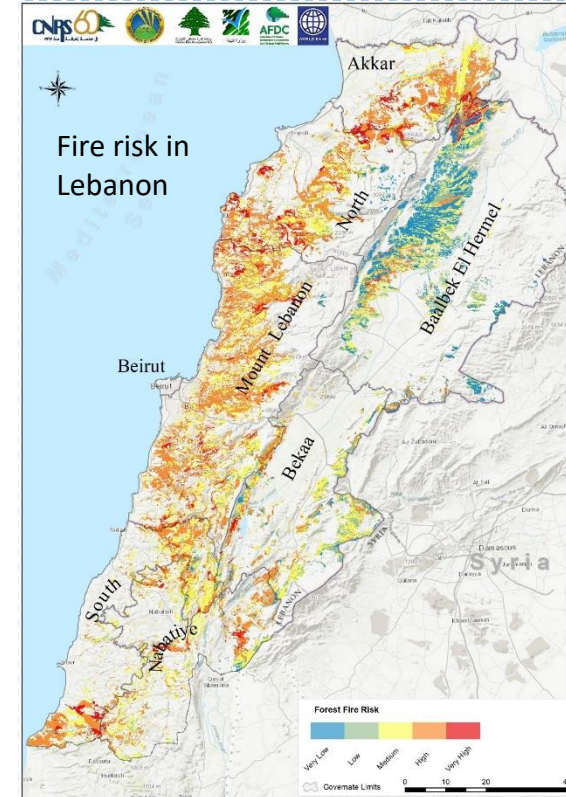
- Monitoring and managing forest fires.
- Managing response and recovery efforts post-disaster.
- Environmental damage assessment from wars.

Agriculture and Crop Monitoring:

- Monitoring crop health and yield predictions.
- Assessing soil health and land use changes.

Environmental Monitoring:

- Tracking air quality and pollution levels.
- Monitoring coastal and marine ecosystems.
- Assessing biodiversity and habitat changes.
- Assessing open dumpsites, landfills and waste disposal sites.
- Tracking climate change impacts on various ecosystems.



COUNTRY HOT TOPICS

GOFc-GOLD Network: SCERIN / MedRIN Country: Lebanon

Projects/ Success stories / Good practices

Achieved

Good practices on post-fire restoration

The primary objective was to initiate a pilot post-fire restoration process in North Lebanon, focusing on immediate soil stabilization and longer-term ecosystem recovery. The project sought to:

- Initial evaluation and site assessment: Undertaking a thorough evaluation and assessment of the fire-affected sites using both satellite remote sensing and Geographic Information System (GIS) techniques, complemented by field survey data.*
- Designing and planning the restoration process*
- Soil stabilization using Log Erosion Barriers (LEB)*
- Community involvement in restoration efforts*
- Monitoring and evaluation for adaptive management*
- Post-fire soil erosion protection Guidebook for Lebanon was also produced*

Joint Workshop of the GOFc-GOLD SCERIN and MedRIN Networks

CIHEAM conference center, Chania, Greece, July 16 – July 19, 2024

Land Cover Change (LCC) and Extreme Events in the Context of Climate Change

Mediterranean Agronomic Institute of Chania

Region of Crete

Eratosthenes Center of Excellence, Cyprus University of Technology

Aristotle University of Thessaloniki

NASA LCLUC Program

GOFc-GOLD and START, USA



Future plans

Community-based wildfire risk management in Lebanon's vulnerable landscapes (GEF funded project managed by the WB and executed by the Ministry of Environment) Support for an enabling environment for wildfire management (will enhance the enabling environment for wildfire management to avoid, reduce and reverse land degradation at the national, regional, & local levels) and Investments in improved forest and fire management (will provide investments to support forest fire management activities in the context of community-based forest management).

Near East Network on Wildlands Forest Fire Enhancing fire management in the NENA region initiated by FAO Regional Office for the Near East and North Africa (FAO RNE) Provide a platform for countries' focal points to share perspectives and outline individual and joint actions to accelerate efforts in strengthening regional fire management. Identify next steps to enhance the role of NENFIRE in supporting countries to implement disaster risk management and integrated fire management approaches. Discuss and prioritize top priorities for scaling up efforts in fire management within the NENA region. Determine concrete actions and financing required over the next two years to strengthen the role of the network. Explore how NENFIRE, FAO and other networks can effectively assist countries in enhancing their capacities in fire management to achieve global forest goals and targets.

