

**( TRL SPACE ↑ )**

# Our work in 2023

3

small EO satellites  
projects

1

Moon  
probe

6

products  
in development

# Value

3

mil. EUR  
raised investment

10

mil. EUR  
valuation in 2022

5,6

mil. EUR in  
ongoing contracts

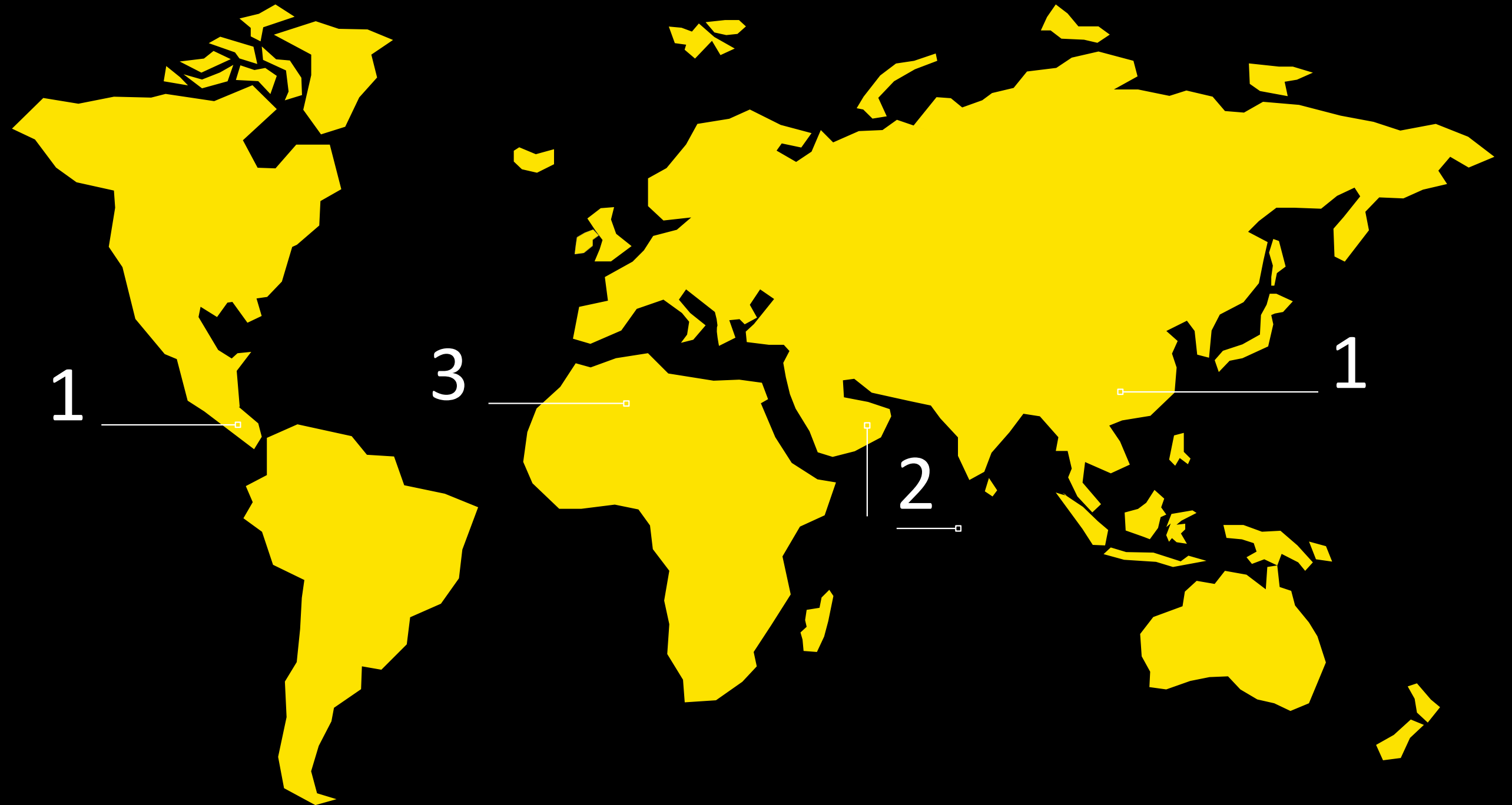
**How can address the main challenges here on the Earth?**

**How can we extend benefits of space to new and developing countries?**

**How do we sustainably expand into space?**



# TRL Space in the World



# Hyperspectral Products

## Smart Camera System

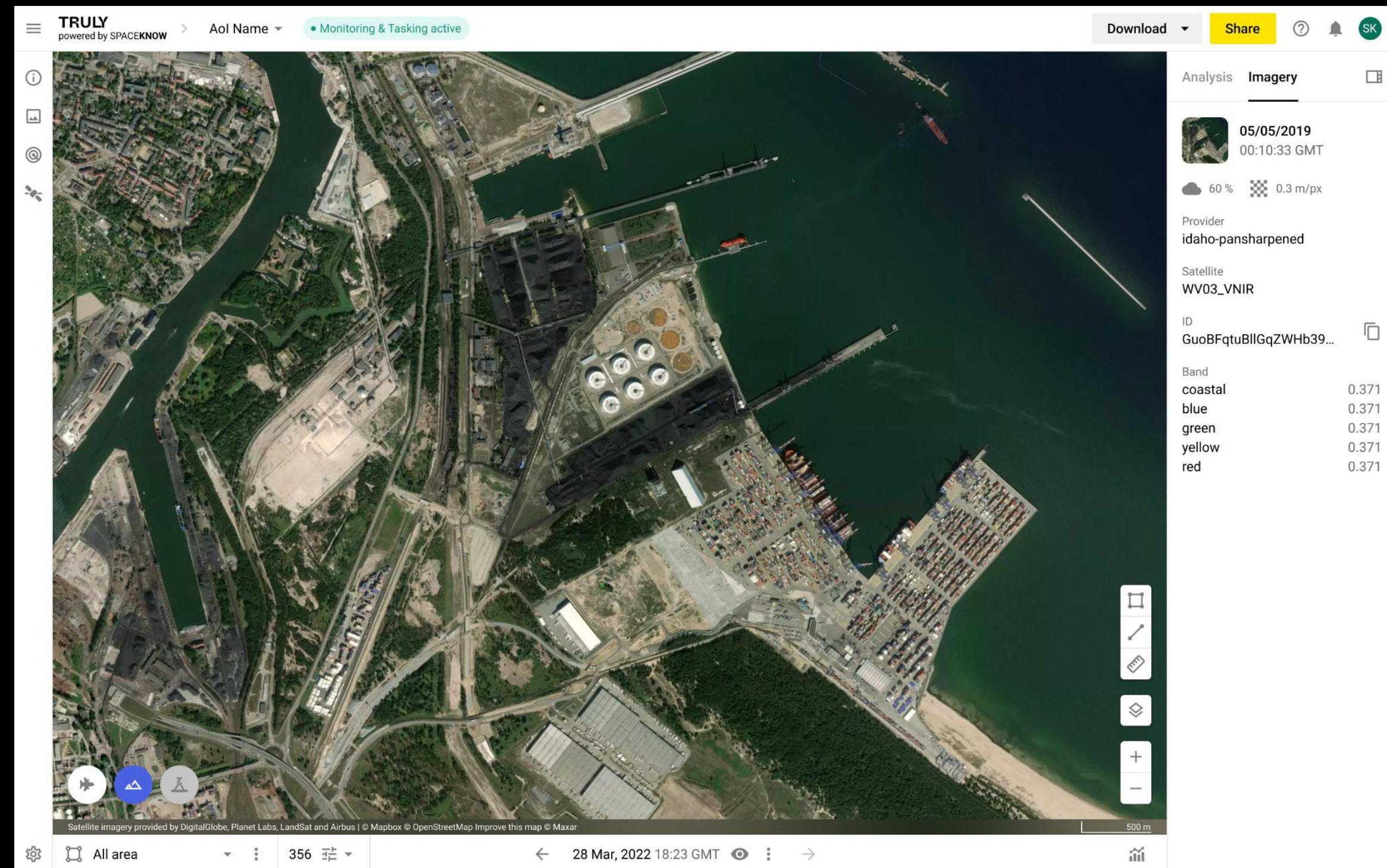
- On-board data processing
- Sole payload or dedicated satellite

## Spectral Reflectance Research

- Case-specific research of spectral reflectance with in-situ, aerial and satellite measurements
- Agriculture, military, maritime, land change, climate change, insurance in Kenya, Rwanda, the Maldives.

## TRULY Virtual Constellation

- Automated AI-trained detection of different phenomena
- Integrated into our platform for satellite imagery analysis









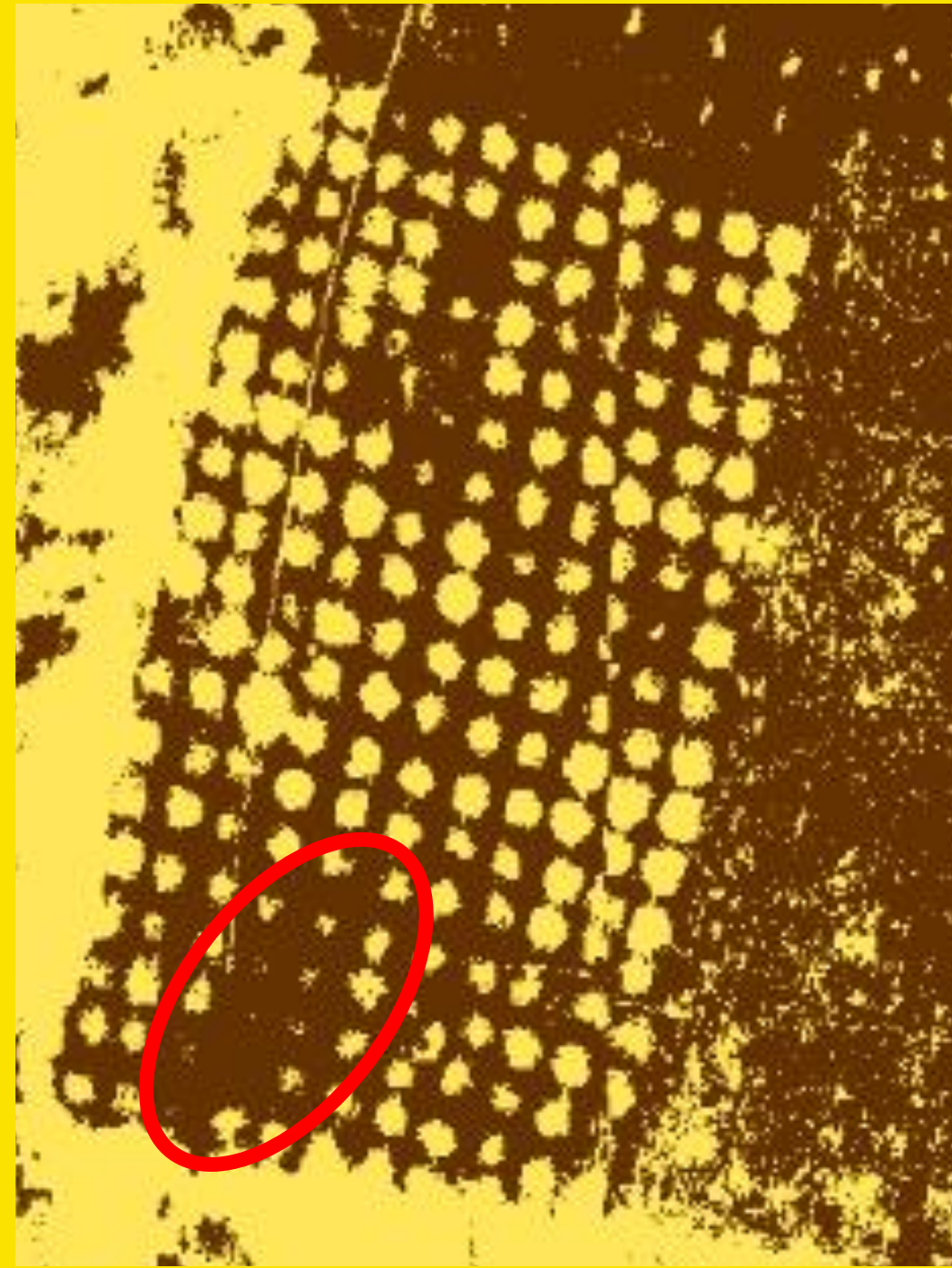
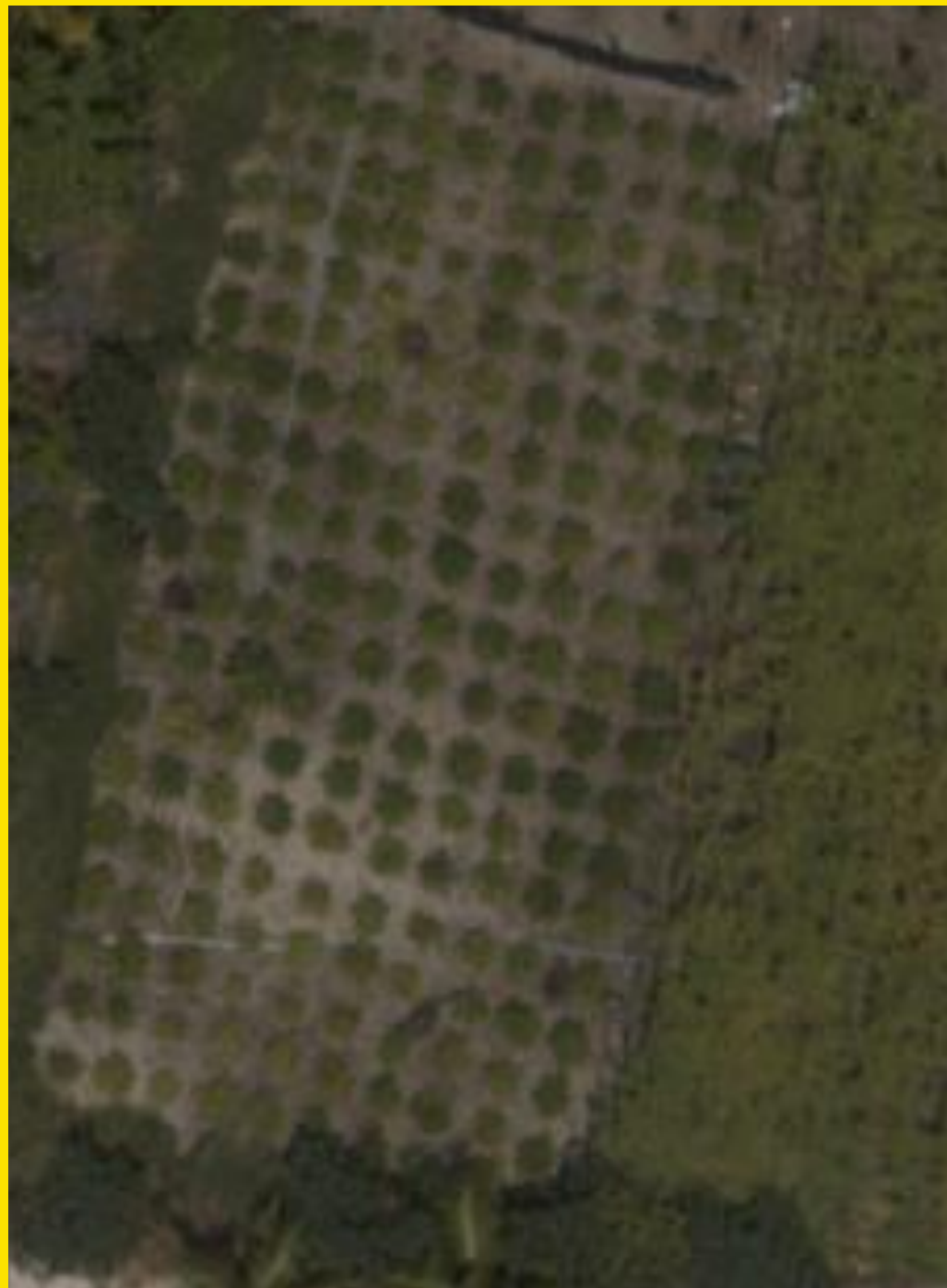
# Hyperspectral data



TRL SPACE ↗

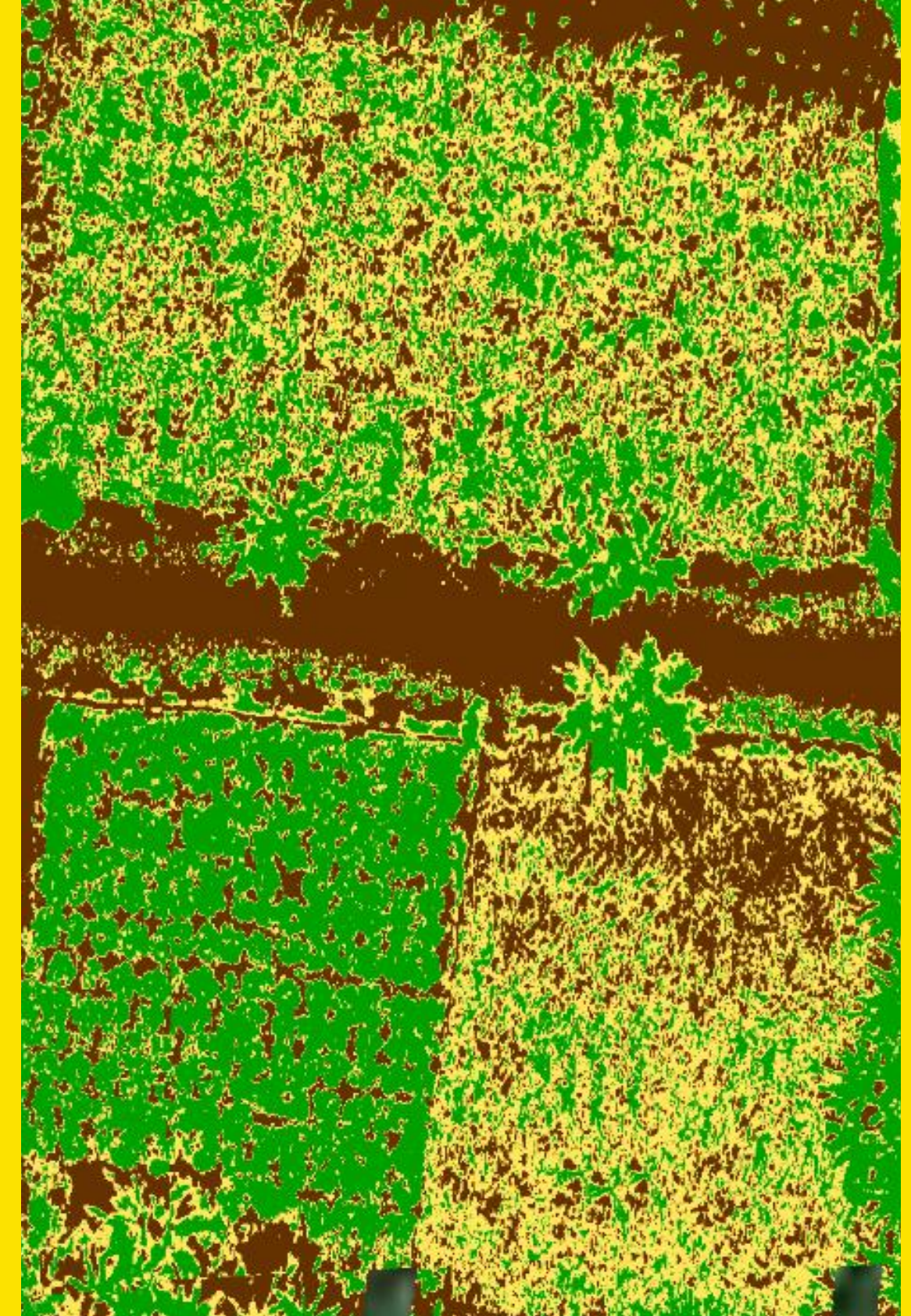
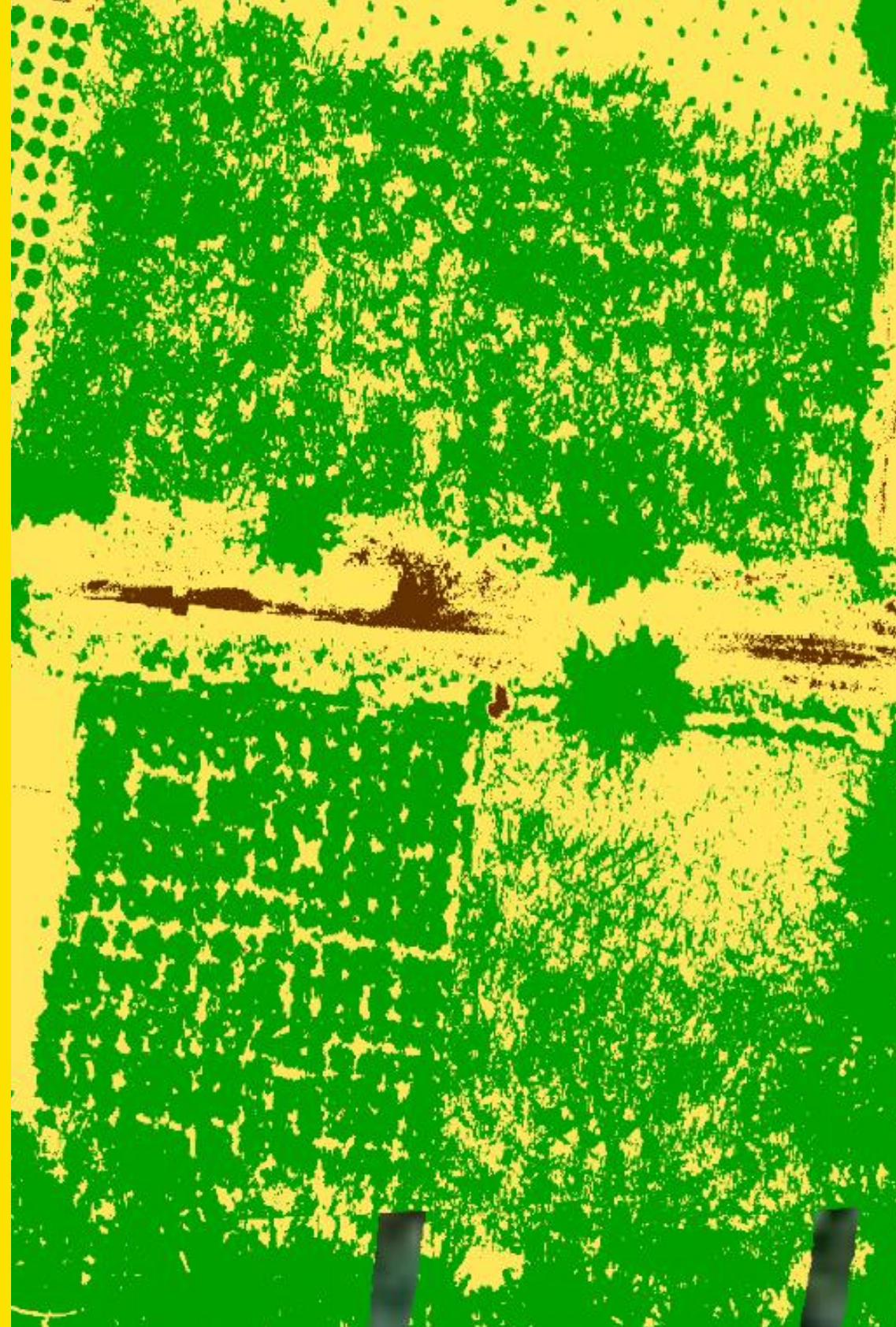


# NDRE, MSAVI-HI



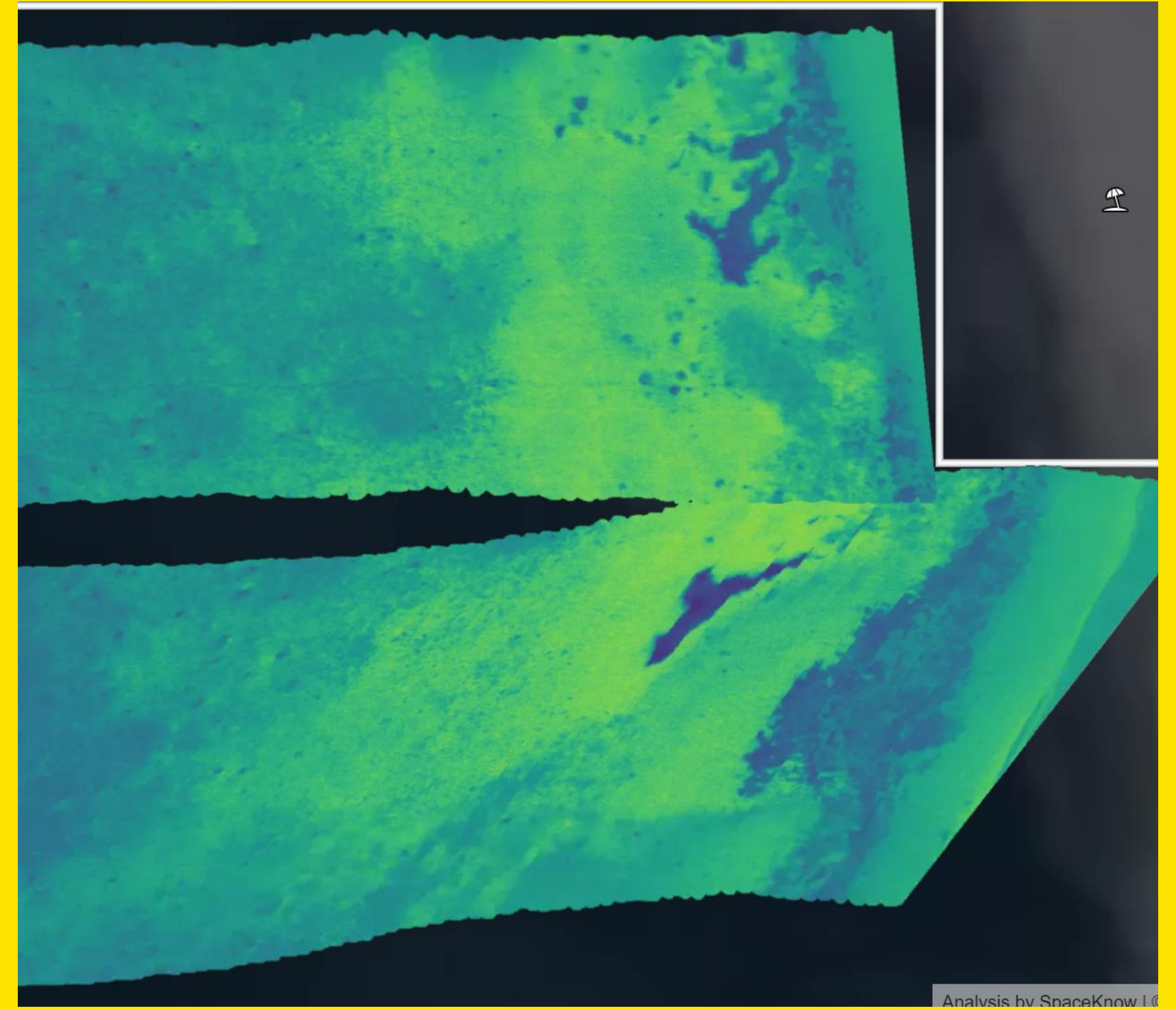
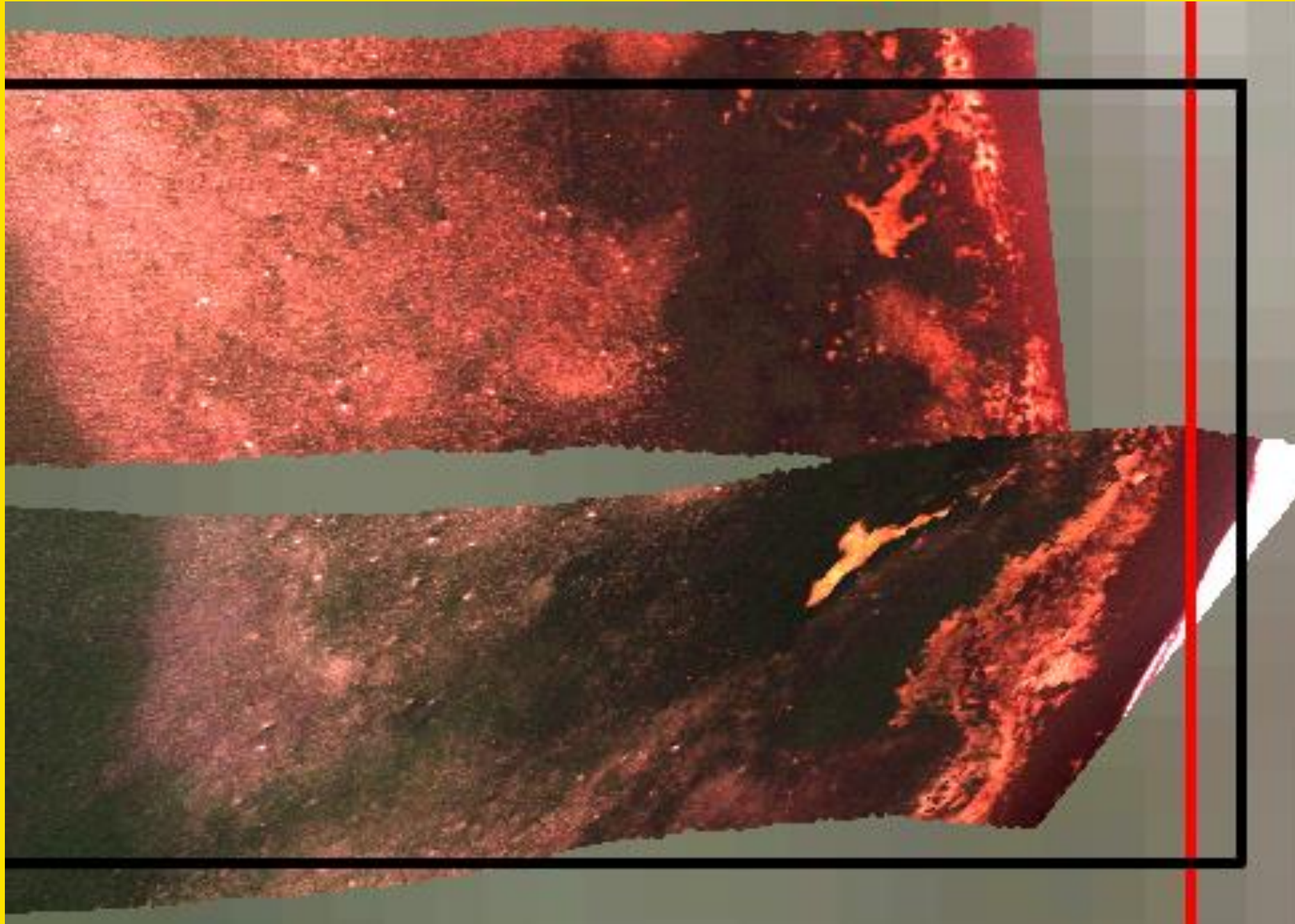


# NDVI, EVI

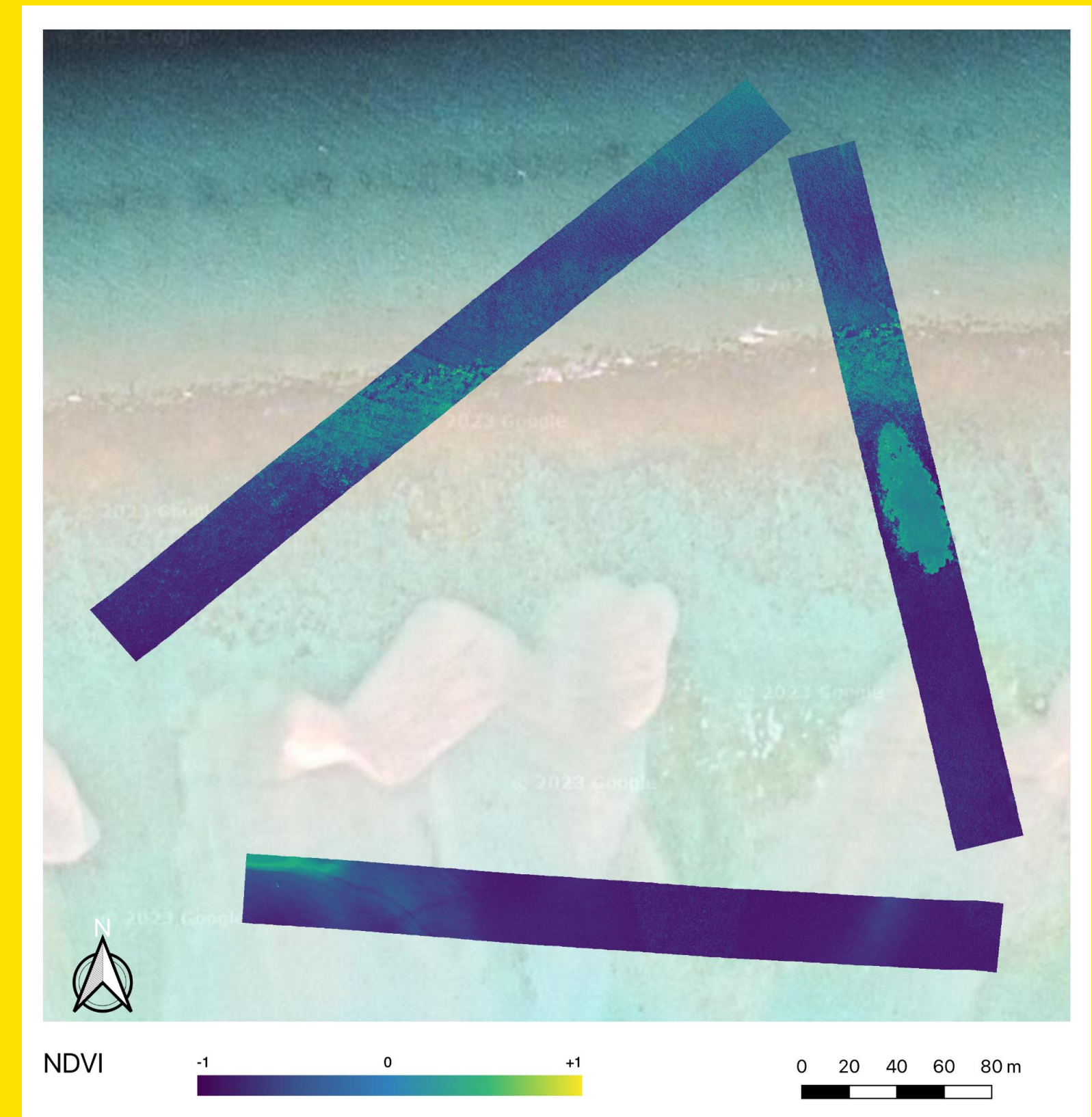




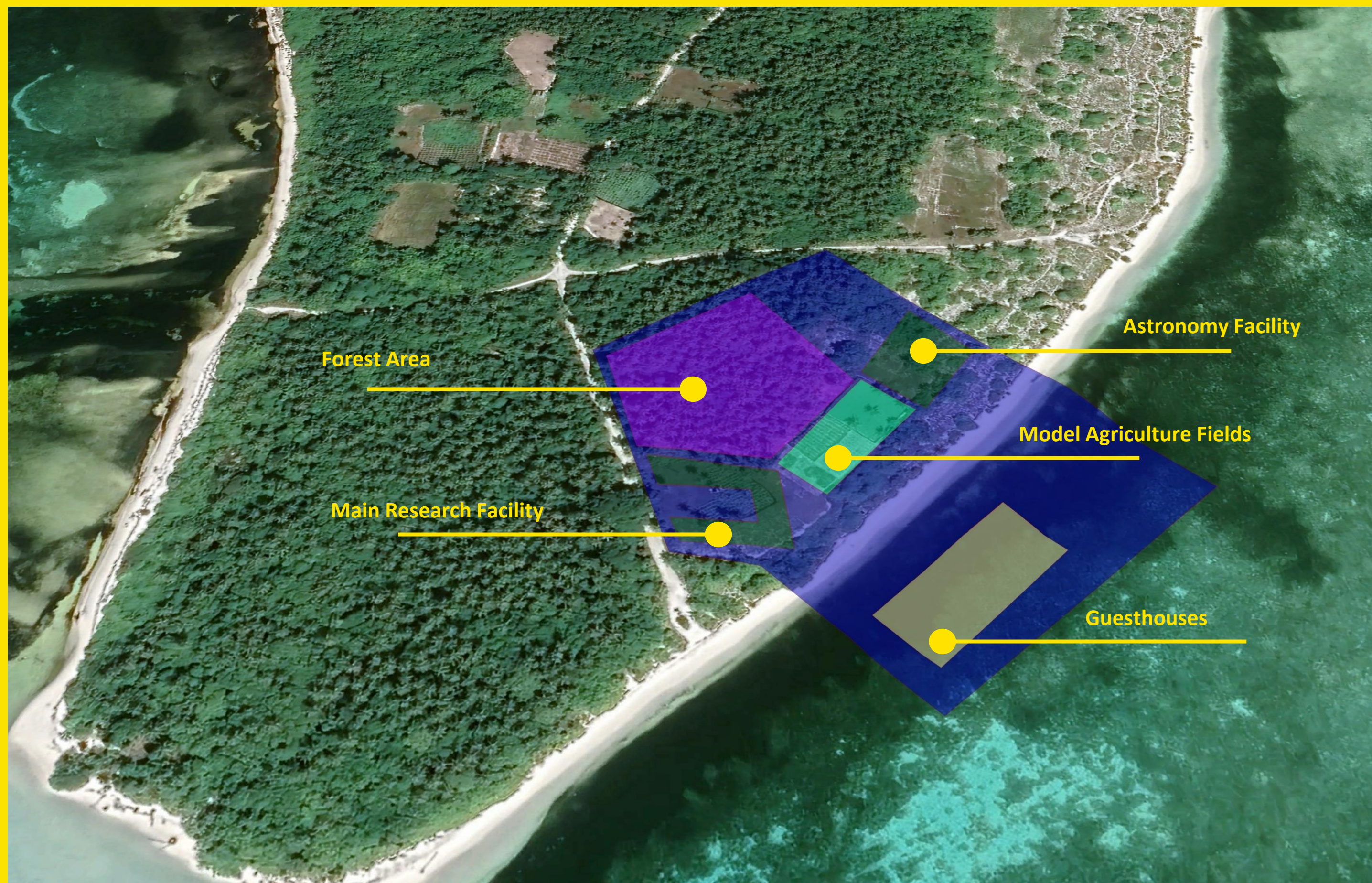
# NDVI













# Smart Agriculture and Experimental Fields

We will test new agriculture technologies and practices, including real-time in-situ monitoring (sensors, laser-based sensing) and remote sensing (aerial/satellite hyperspectral) for new crops to provide more calories and nutrition at hard-to-farm areas.



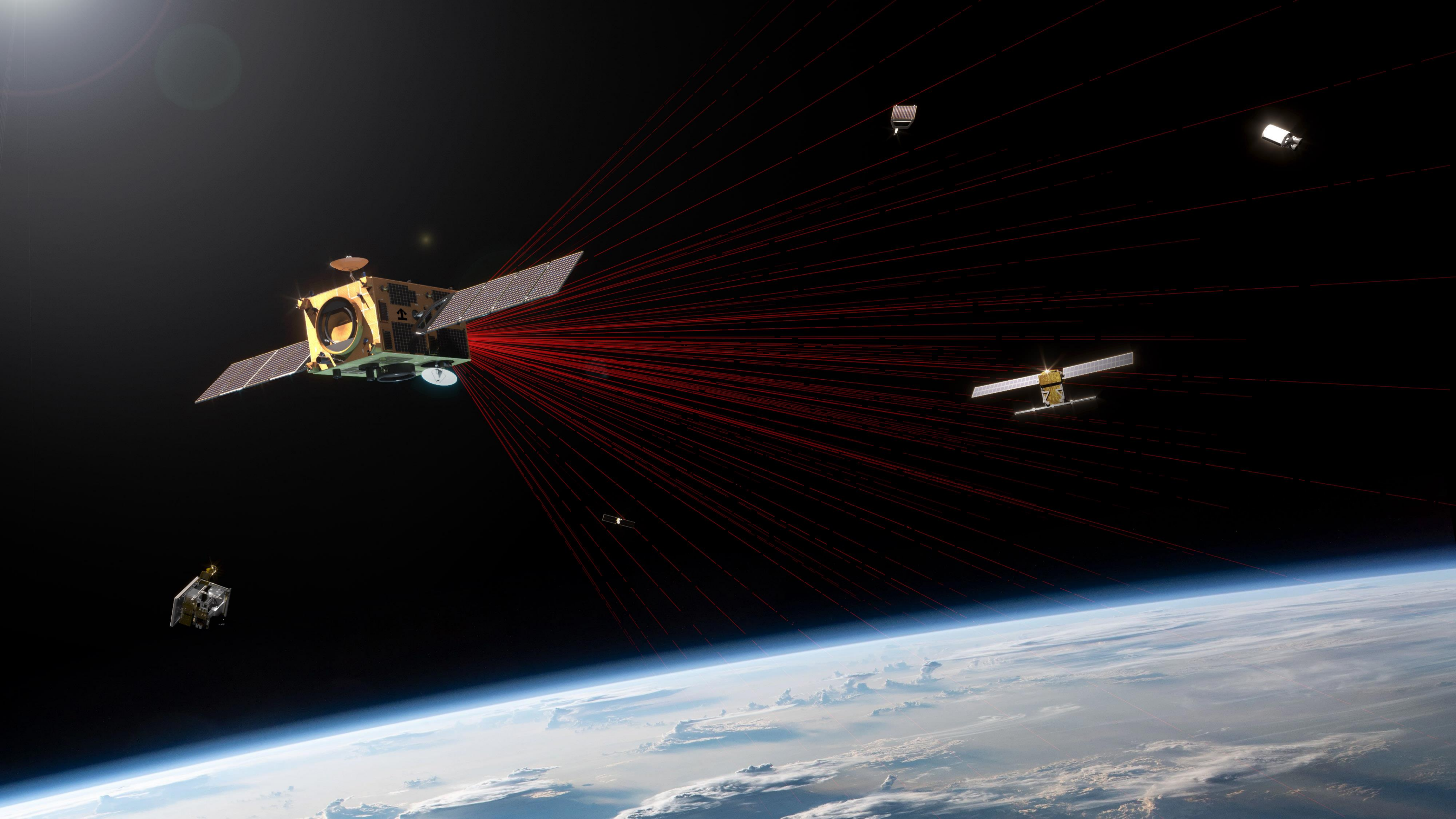


# EO Data Use & Analysis Center

This centre will focus on building capabilities to utilize satellite imagery. Specifically, to analyse, interpret and transform data into actionable policy and measures for agriculture, climate change, and natural hazards protection.



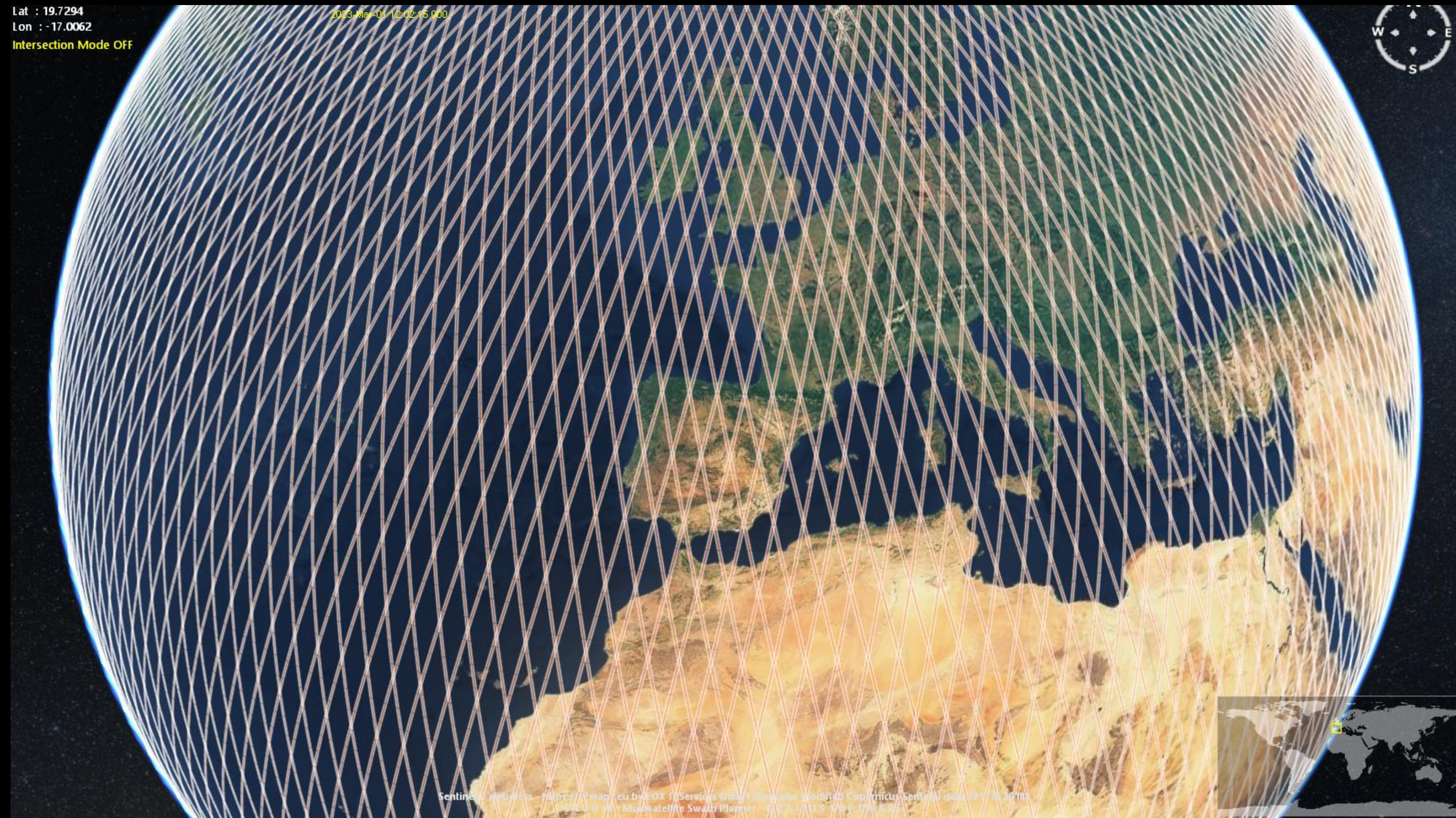






Lat : 19.7294  
Lon : -17.0062  
Intersection Mode OFF

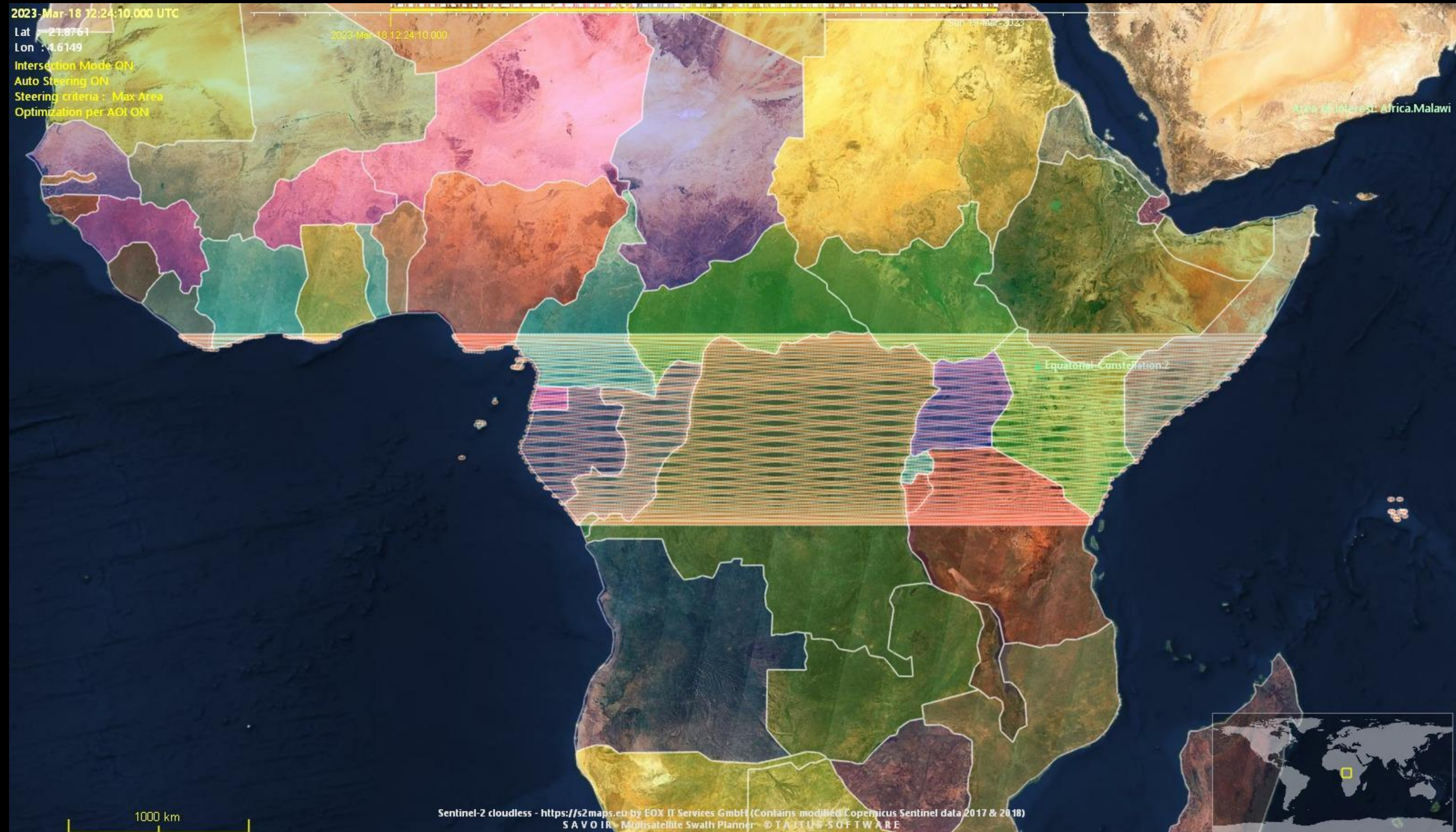
2023-Mar-01 12:02:15.000



Sentinel-2 imagery - Map of Africa by ESA / Services Unit / Copernicus Sentinel data 2017-2018  
© 2017 - MapSatellite Swath Planner - G.A. / 1115 2005-2018 A.S.



# FIRST EQUATORIAL CONSTELLATION

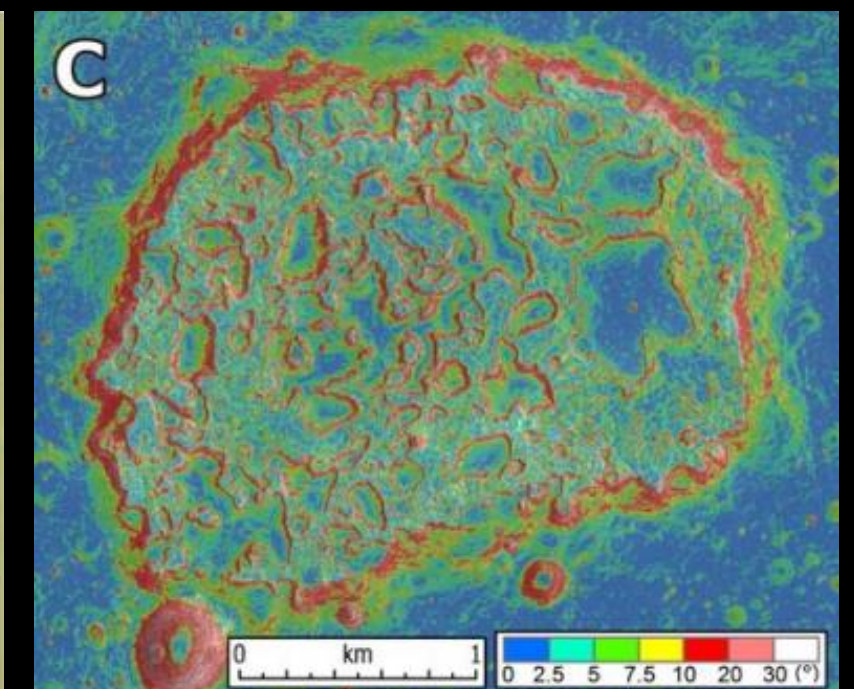
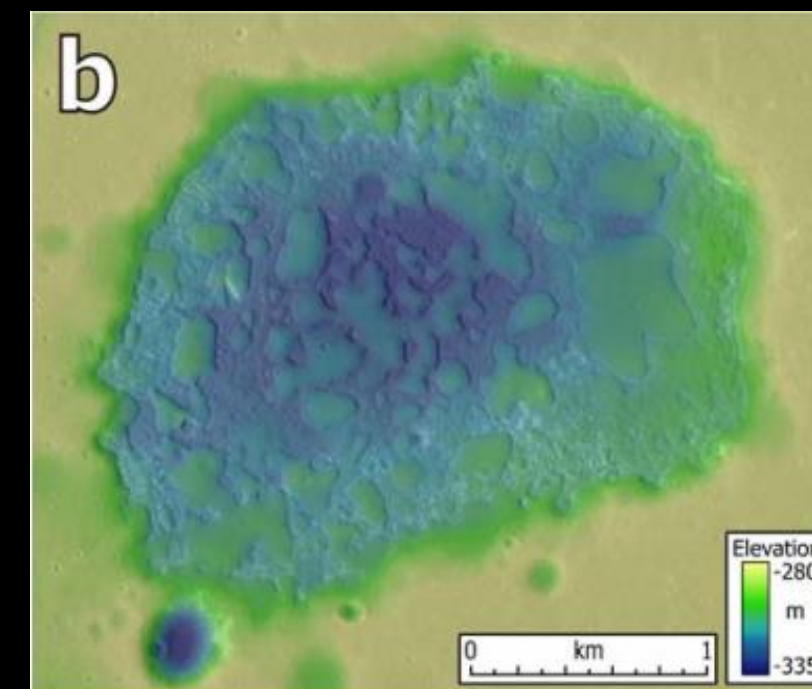
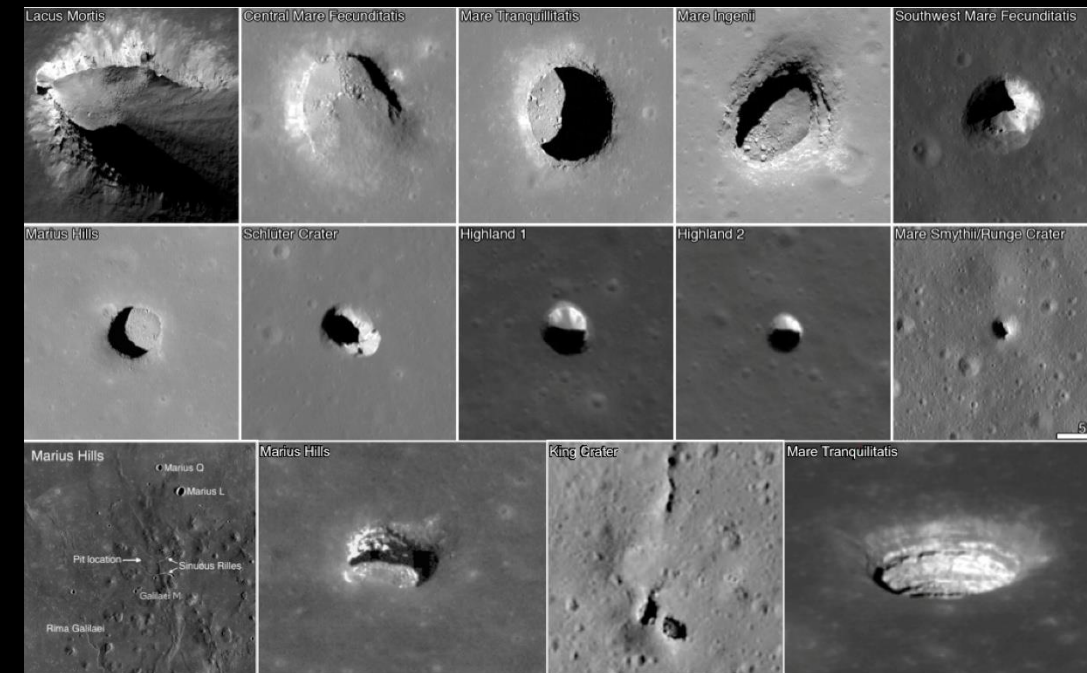
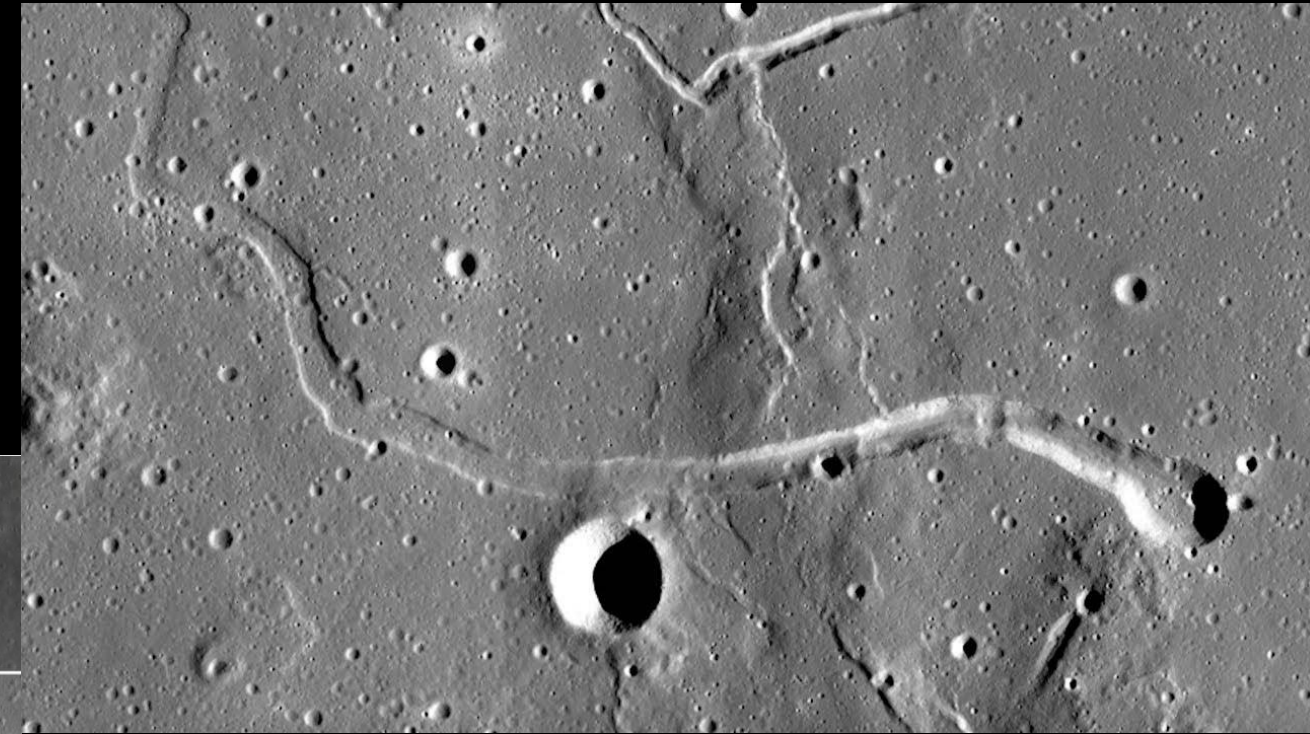








# Lunar Geology Orbiter







**THANK YOU**

**BOHACEK@TRLSPACE.CZ**