

WRI'S POSITIONING



Environment



Research



WORLD
RESOURCES
INSTITUTE



Action



Development

Gregory Taff

<https://www.wri.org/profile/gregory-taff>

WE FOCUS ON SEVEN GLOBAL CHALLENGES



Food



Forests



Water



Ocean



Climate



Cities



Energy

OUR GLOBAL PRESENCE



International Offices
Programmatic Offices

OUR APPROACH

Count It

Managing for results
Data, Analysis & Tools

OUR APPROACH

Count It

Managing for results
Data, Analysis & Tools

Change It

Systemic Adoption
& Communications

OUR APPROACH

Count It

Managing for results
Data, Analysis & Tools

Change It

Systemic Adoption
& Communications

Scale It

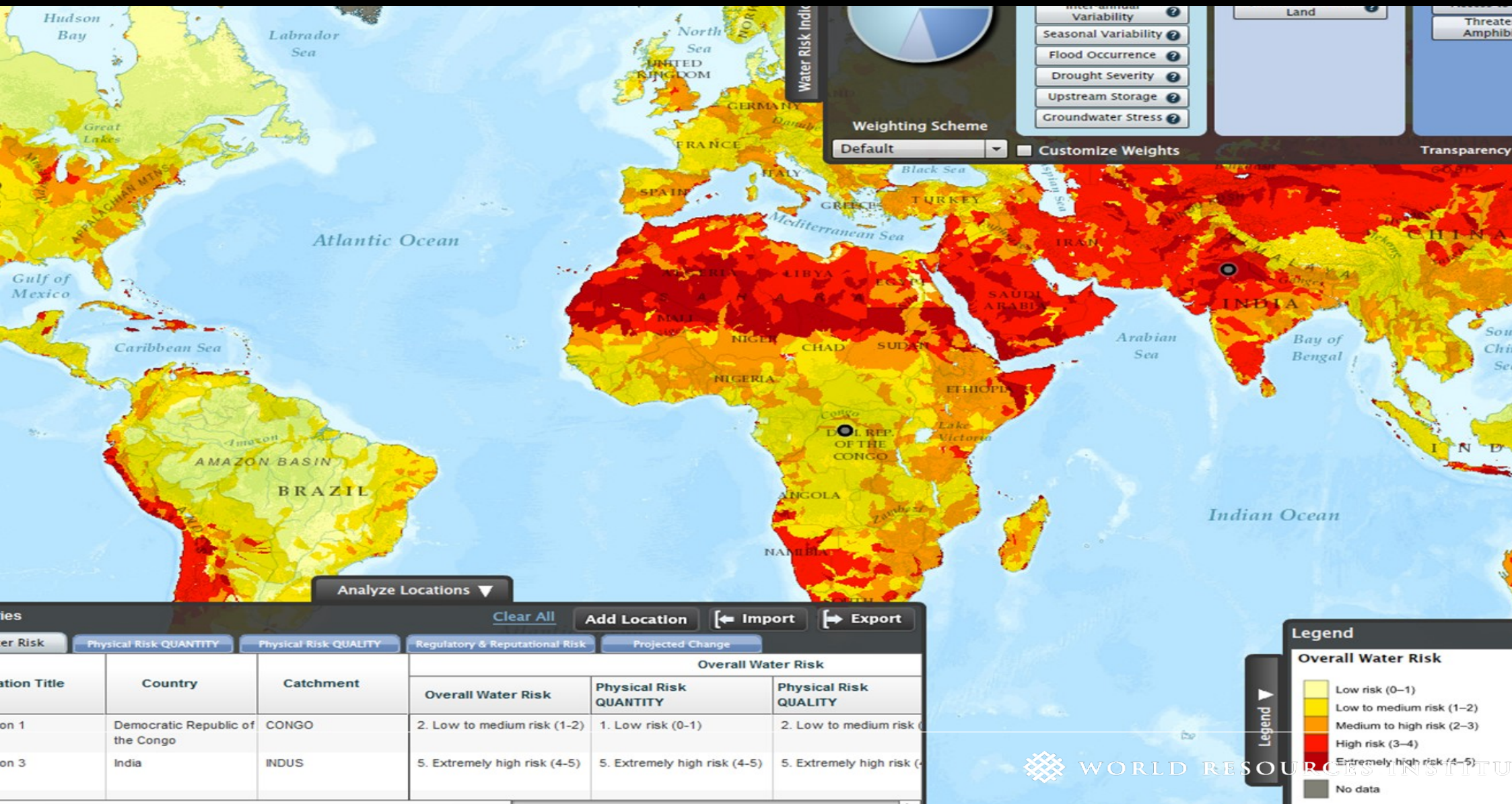
Convening, Testing
& Influencing

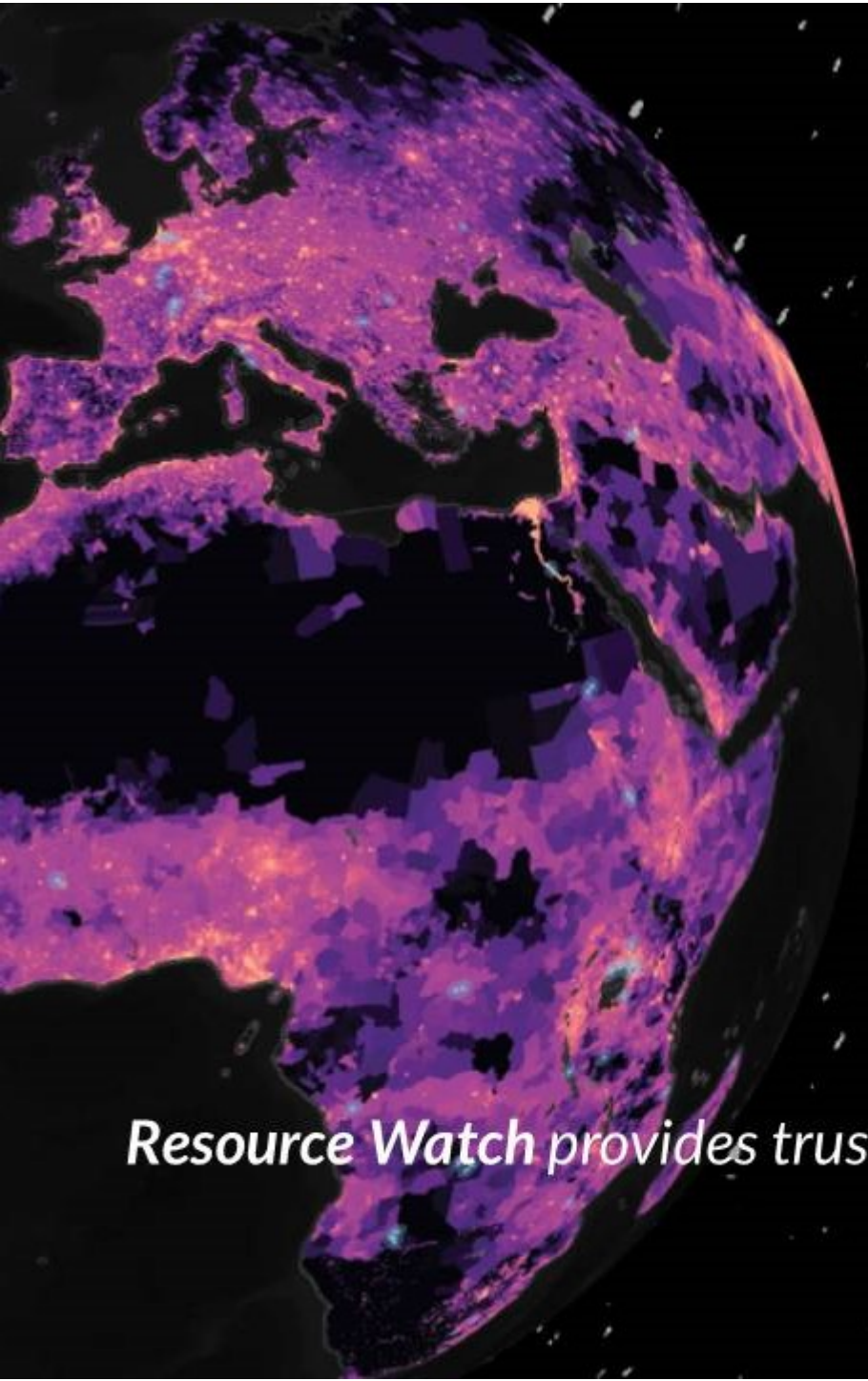
An aerial photograph showing a dense green forest on the left and a cleared, light green field on the right, separated by a narrow dirt road. The forest is lush and textured, while the field is more uniform in color.

Data for Impact

SCERIN7, 2019, G.Taff, WRI

QUEDUCT PROVIDES GLOBAL WATER RISK INFORMATION FOR 15,000 WATER BASINS





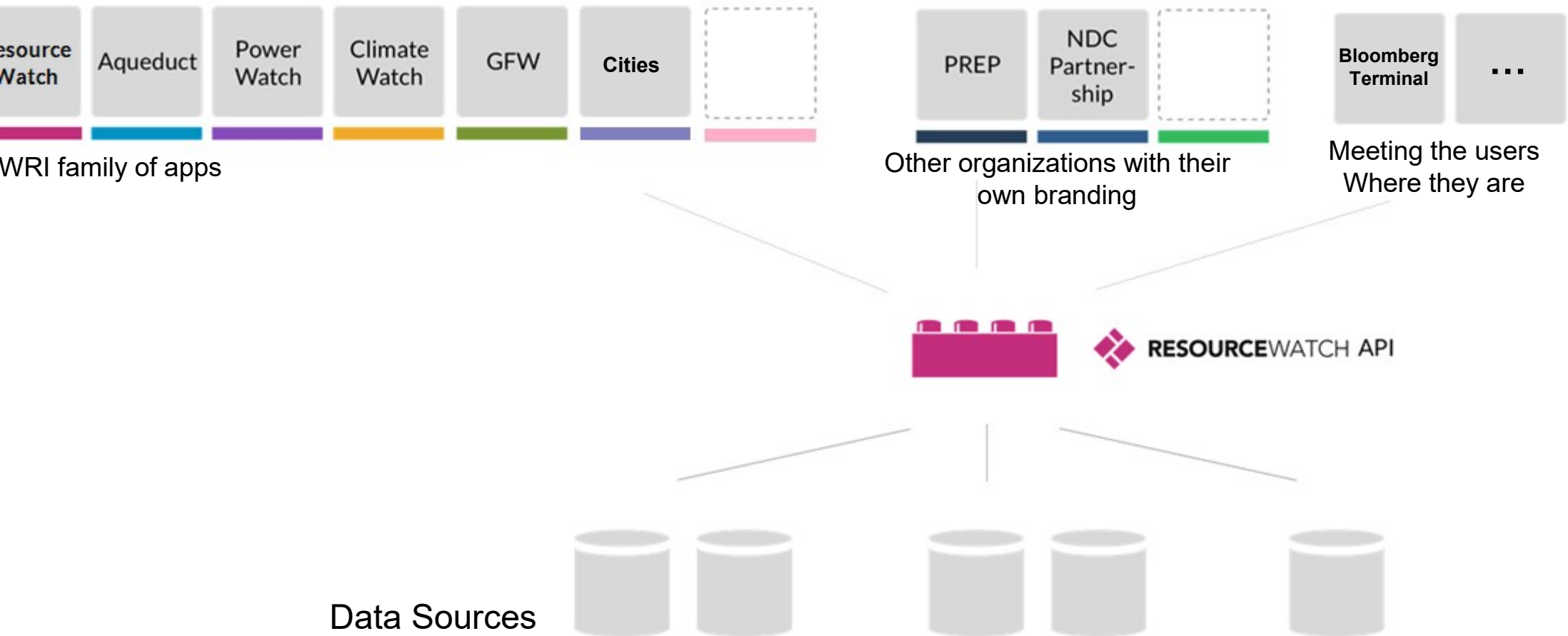
RESOURCEWATCH

Monitoring the Planet's Pulse

Resource Watch provides trusted and timely data for a sustainable future.

SCERIN7, 2019, G.Taff, WRI

3: Build custom apps for specific uses and users (one size does not fit all!)



Data Guiding Principles

Open

Can be **freely used, re-used, and redistributed**

Relevant

Help answer questions to **address urgent, global challenges**

Quality

The most **timely, complete, accurate, and consistent** of its kind

Diverse

Cover a **diverse range of themes** for a wide range of audiences

Balanced

Distribute **evenly across all themes** on Resource Watch

Agile

Incorporate continuous **iteration, feedback, and evolution**



lore

filter datasets

Most favored

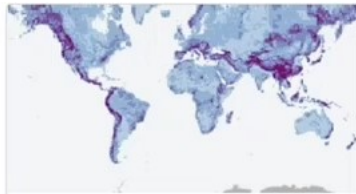


Human Footprint

Source: WCS/ETH
CUNY/CIESIN

Geospatial, Human Footprint, more...

[Details](#)



Landslide Susceptibility

Source: NASA

Geospatial, Landslide, Raster, Vulnerability, more...

[Add to map](#)

[Details](#)



Subnational Political Boundaries

Source: GADM

Administrative boundaries, Country, Geospatial, more...

[Add to map](#)

[Details](#)



Political Democracy



Coral Reef Locations



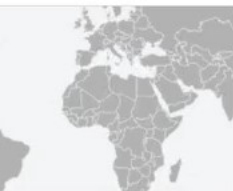
SCERIN7, 2019, G.Taff, WRI

lore

filter datasets

Clear filters

Most favored

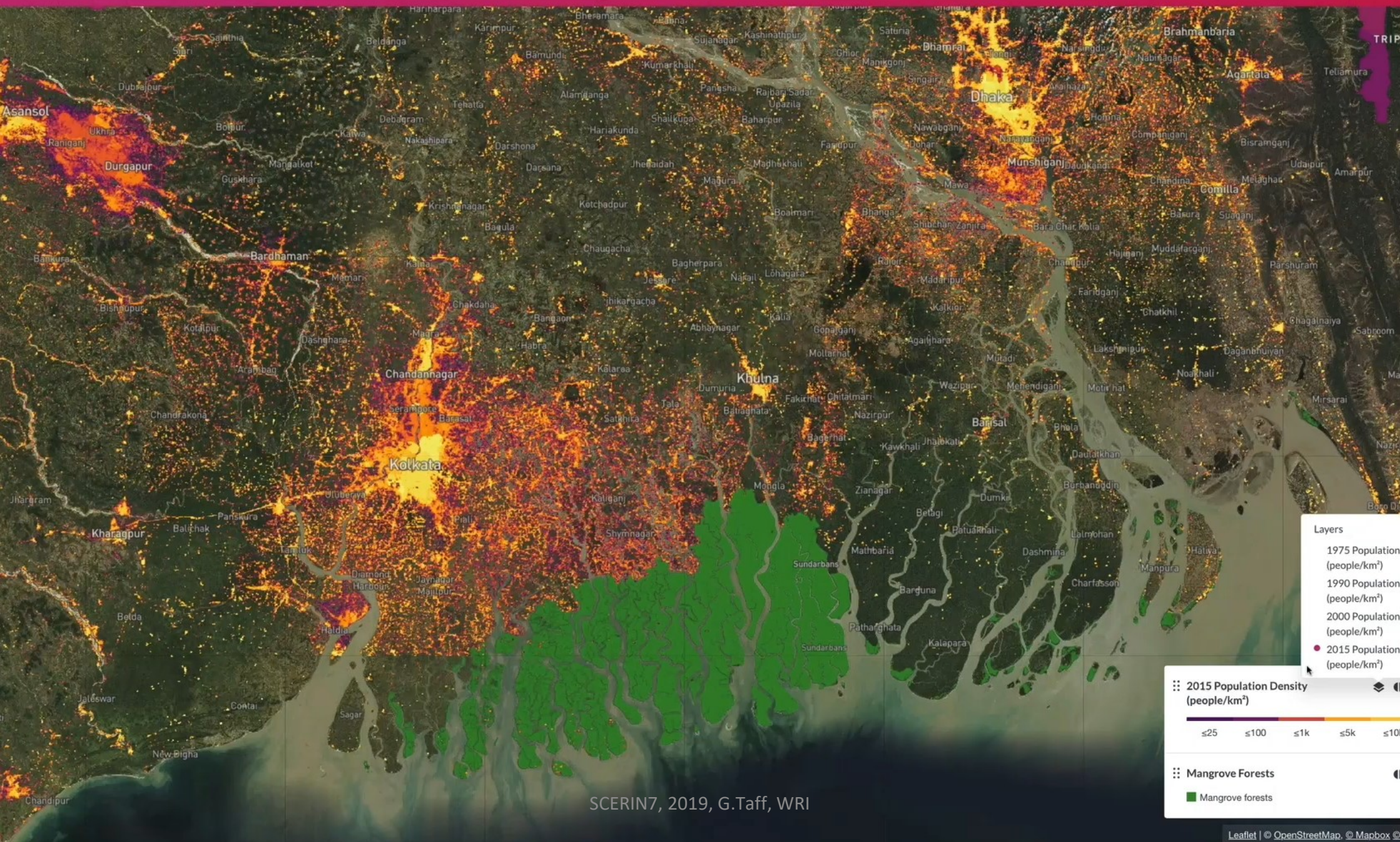


**nd Mangrove
nsity**
-WCMC
al, Historical, Mangrove
more...
Details

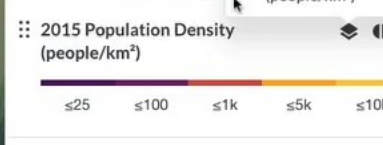
Mangrove Forests
Source: UNEP-WCMC
Forest, Geospatial, Historical, Mangrove
more...
Remove from map Details

1





- Layers
- 1975 Population (people/km²)
 - 1990 Population (people/km²)
 - 2000 Population (people/km²)
 - 2015 Population (people/km²)



- Mangrove Forests
- Mangrove forests

SCERIN7, 2019, G.Taff, WRI

Explore

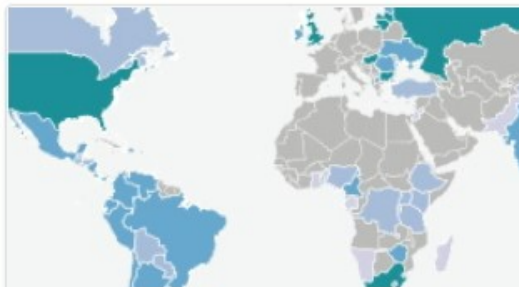
Search and filter datasets 


datasets Most viewed   



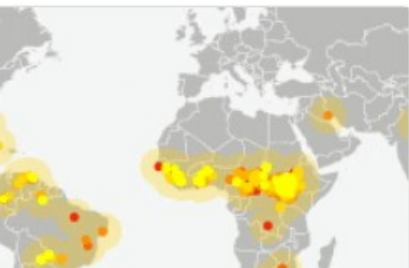
International Political Boundaries 
Source: GADM
Administrative boundaries, Country, Ge more...

[Add to map](#) [Details](#)

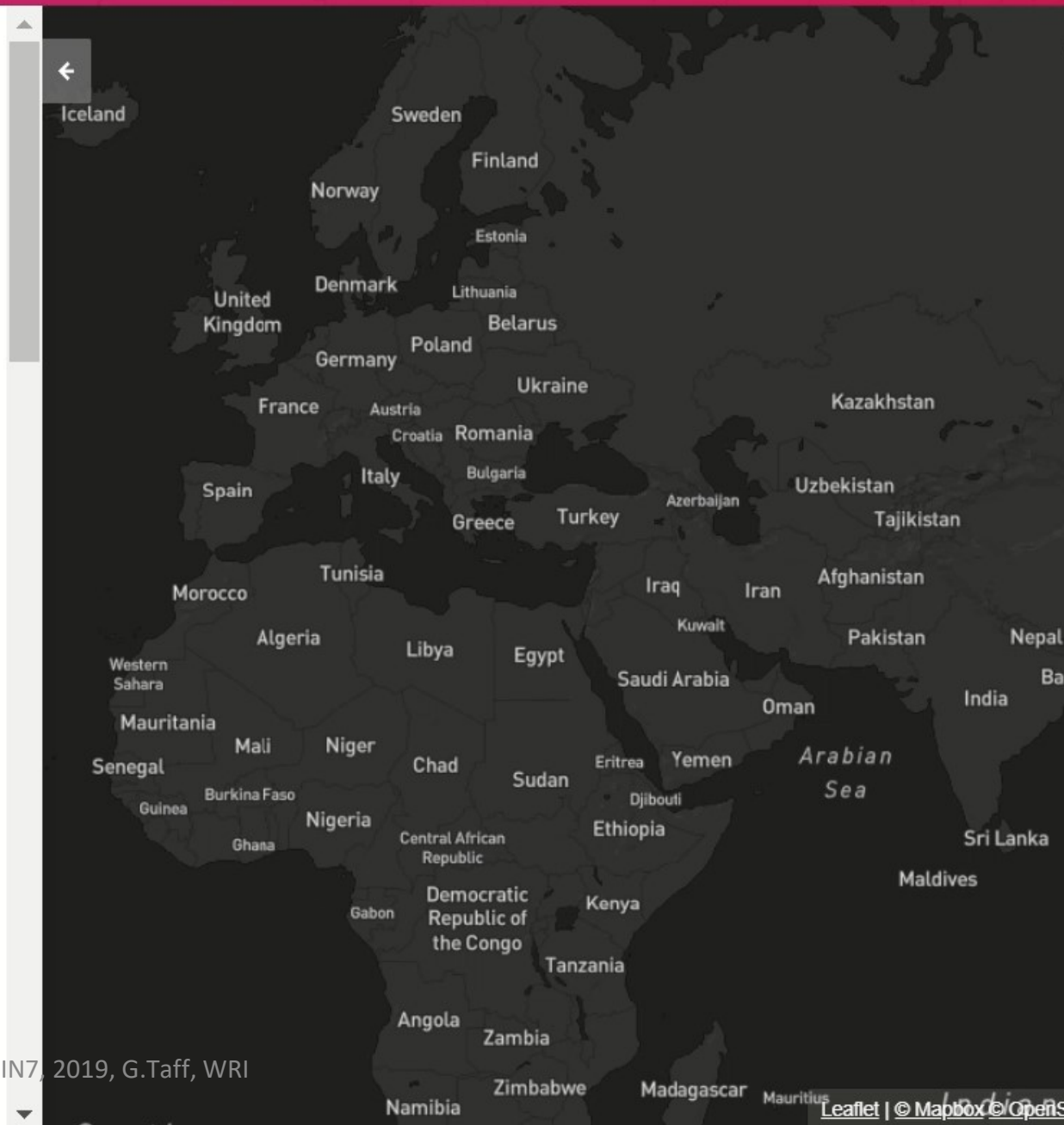


Environmental Democracy Index 
Source: TAI/WRI
Geospatial, Governance, Justice, Social more...

[Add to map](#) [Details](#)




SCERIN7, 2019, G.Taff, WRI




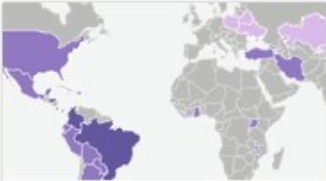
lore

filter datasets 

Most viewed  




Gini Index 
Source: World Bank Group
Annual, Economic, Geospatial, Historical [more...](#)
[Add to map](#) [Details](#)




Gini Index 
Source: World Bank Group
Annual, Economic, Geospatial, Historical [more...](#)
[Add to map](#) [Details](#)



Plant Database 
Energy
Google/KTH Royal
Technology in
pedia/World Resources
change, Coal, Ener [more...](#)
[Add to map](#) [Details](#)



Reservoirs and Dams 
Source: Lehner et al.
Dam, Energy, Geospatial, Historical [more...](#)
[Add to map](#) [Details](#)



Mobility to Climate 



Mobility to Climate 



SCERIN7, 2019, G.Taff, WRI

The Resource Watch Partnership



Create a small grants fund to support communities/NGOs with data to drive action

A story map



Global Forest Watch Small Grants Fund 2015

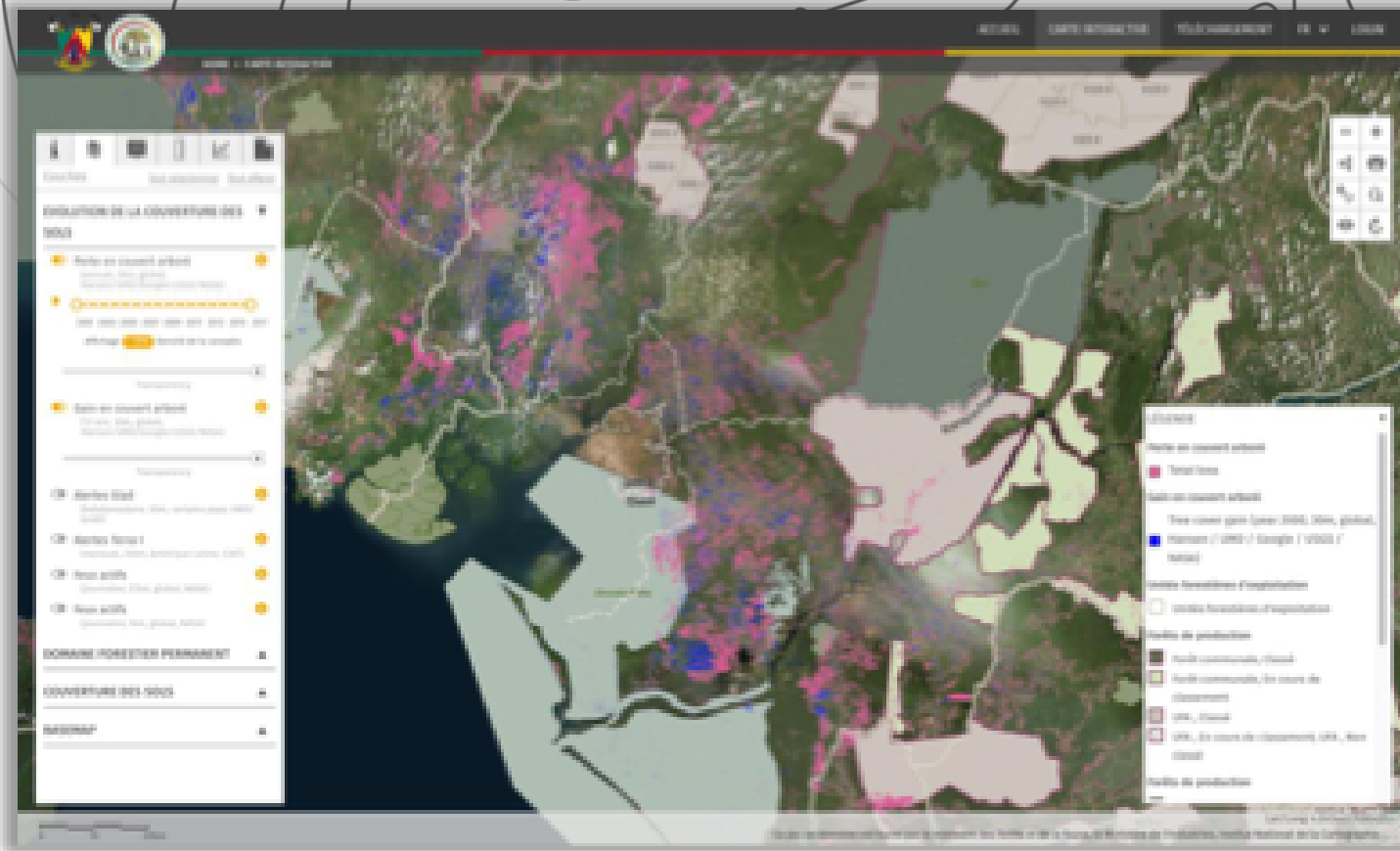


Photo from CIFOR

The Small Grants Fund seeks to promote uptake of Global Forest Watch by civil society organizations to



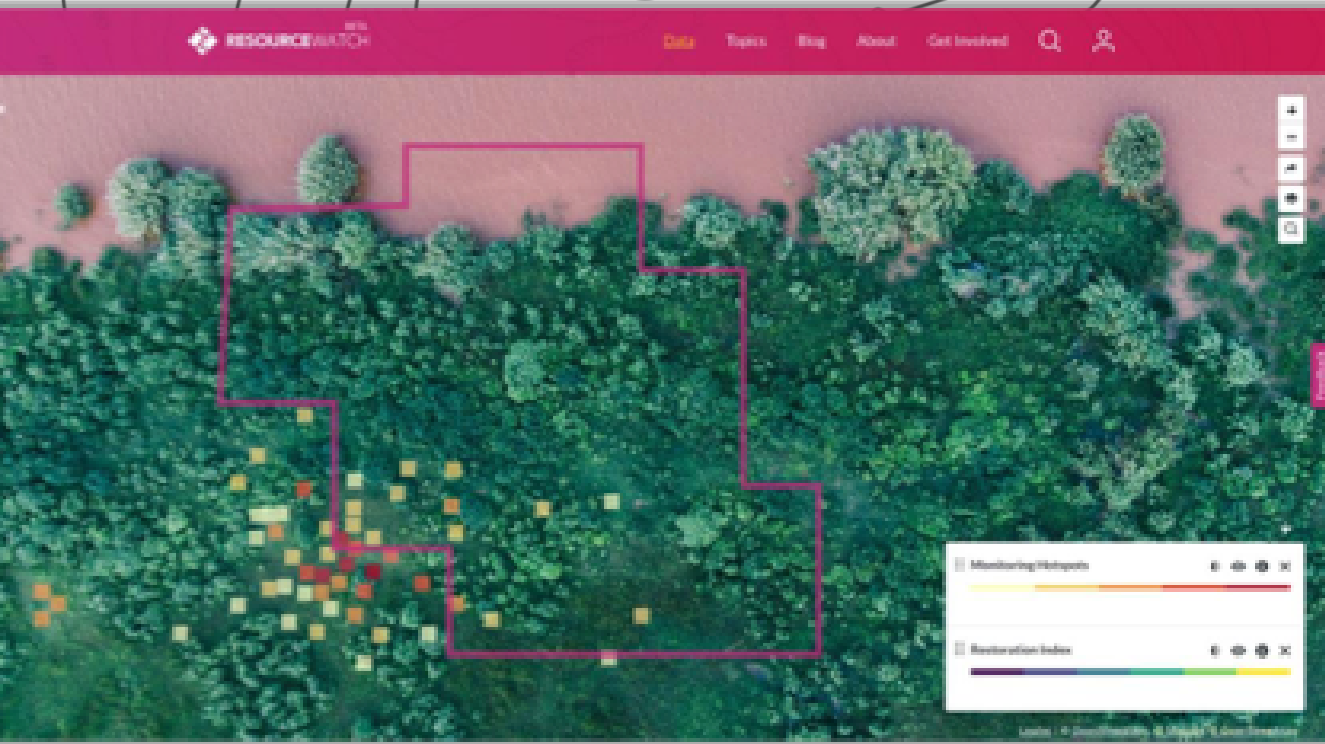
Next phase of Resource Watch: "My Resource Watch" to power local sustainable management



- Enable users to combine bottom up data with global data

Forest Atlas deployment on Resource Watch API

Enable users to combine bottom up data



- My Resource Watch: uploading and managing your own data on Resource Watch should be simple and easy