

Sentinels for Land Applications

Gordon Campbell with contributions from:

- Ben Koetz, Albrecht Schmidt, Francesco Sarti, Henri Laur (ESA)
- Mirela Constantin (TerraSigna)
- Krzysztof Mysłakowski (Creotech)

20 June 2017

Introduction



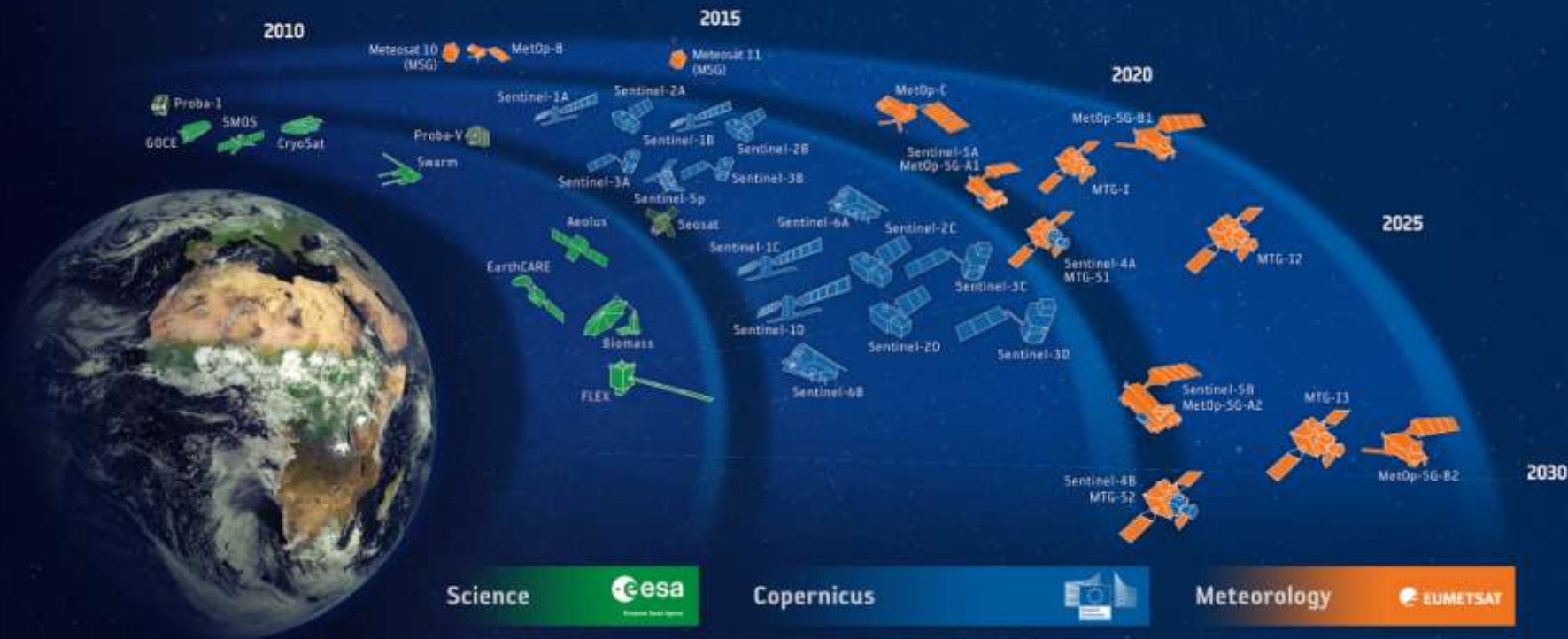
Sentinel status

Example land applications

ESA Regional Initiatives



ESA-DEVELOPED EARTH OBSERVATION MISSIONS



What is Copernicus?

Integrated Earth observation system of systems. European response to global needs, such as

- managing the environment,
- mitigating the effects of climate change and
- ensuring civil security



Slide 4

Copernicus: A New Generation of Data Sources



Sent-1A/B



Sent-2A/B



Sent-3A/B



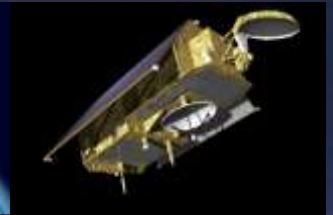
Sent-4A/B



Sent-5/5P



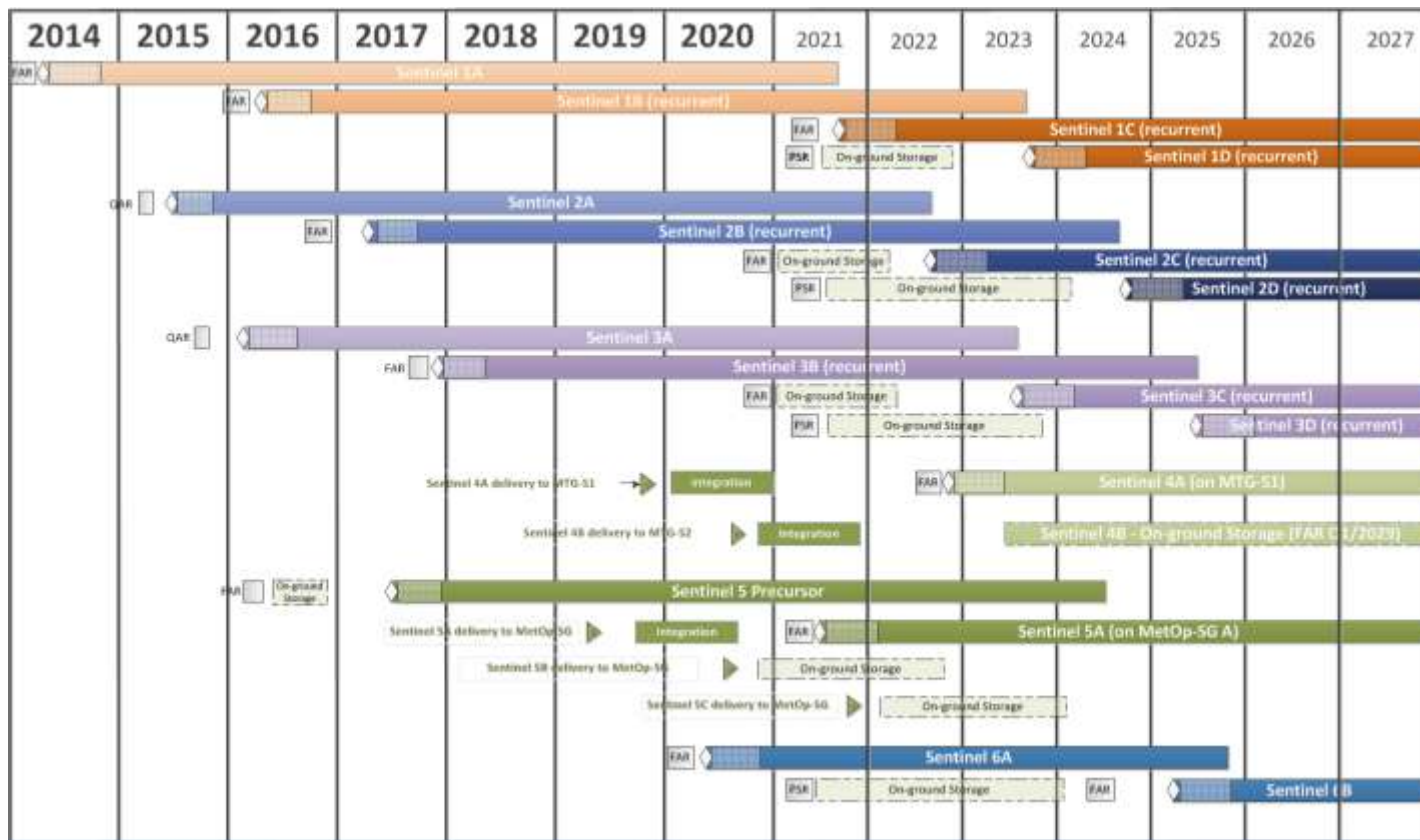
Sent-6A/B



- Copernicus - European space flagship programme, led by the EU
- ESA is responsible for space component, Sentinel development, operation of some Sentinels, data buy from other partners, system evolution
- Sentinels – most comprehensive EO system world-wide for environmental monitoring
- Free and open data policy



Sentinel - Tentative Launch Schedule

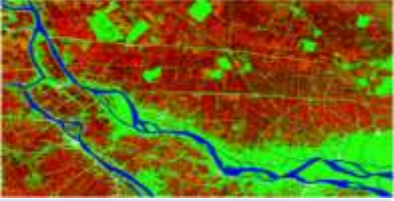
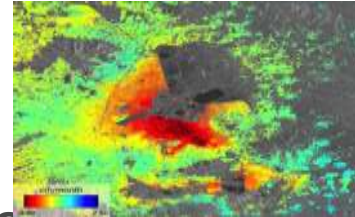
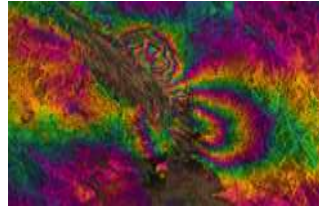
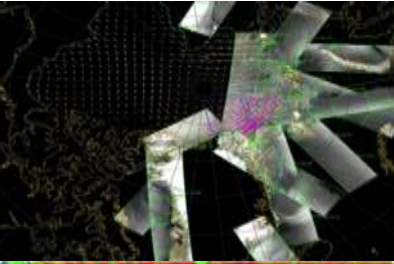


Sentinel-2A: Mount Etna Eruption, Italy





Sentinel-1: C-band SAR mission



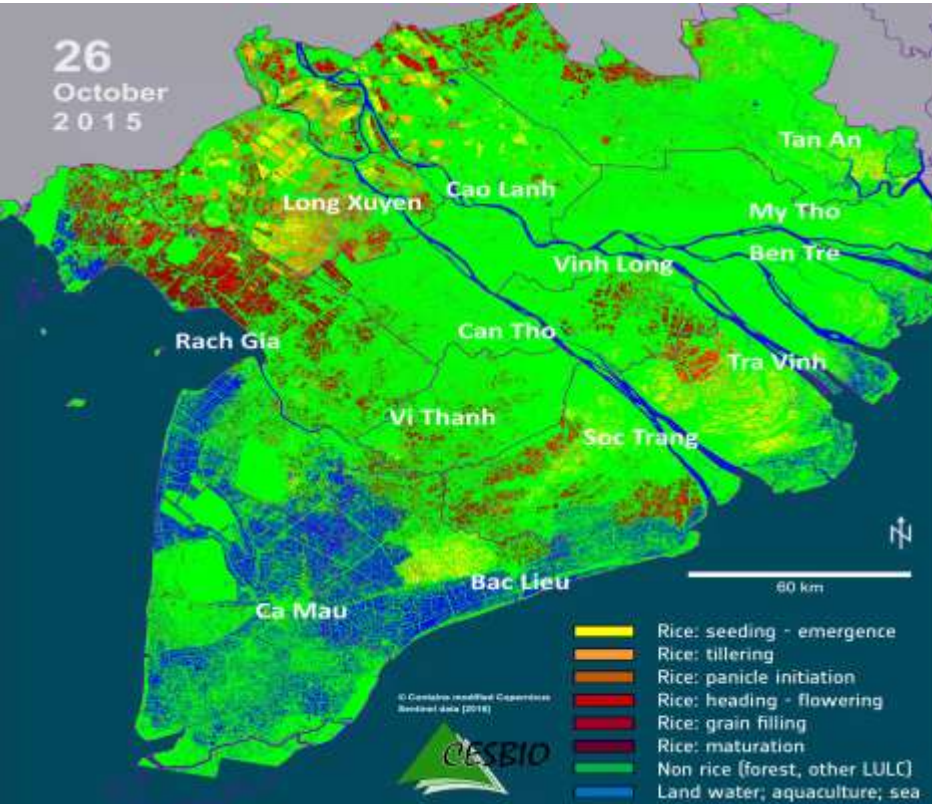
- ✓ **Data continuity of ERS and ENVISAT missions**
- ✓ **Copernicus radar imaging mission for ocean, land, emergency**

✓ **Applications:**

- monitoring sea ice zones and the arctic environment
- surveillance of marine environment (e.g. oil spill monitoring)
- maritime surveillance (e.g. ship detection)
- wind, wave, current monitoring
- monitoring of land surface motion (subsidence, landslide, tectonics, volcanoes, etc.)
- support to emergency / risk management (e.g. flooding, etc.) and humanitarian aid in crisis situations
- mapping of land surfaces: agriculture, forest, water and soil, etc.

S1 for Rice Monitoring

Monitoring of Crop Stages



Winter-Spring Rice 2015/16

- March 2016: 1.4 Million ha rice
- March 2015: 1.7 Million ha rice
- **16.5% loss in rice area** due drought and salt water intrusion caused by El Nino
- 976.000 people affected, 67 Mil. \$ estimated damage
- Based on unprecedented S1 timeseries


Sentinel-1 & -2 crop type mapping



Slide 11

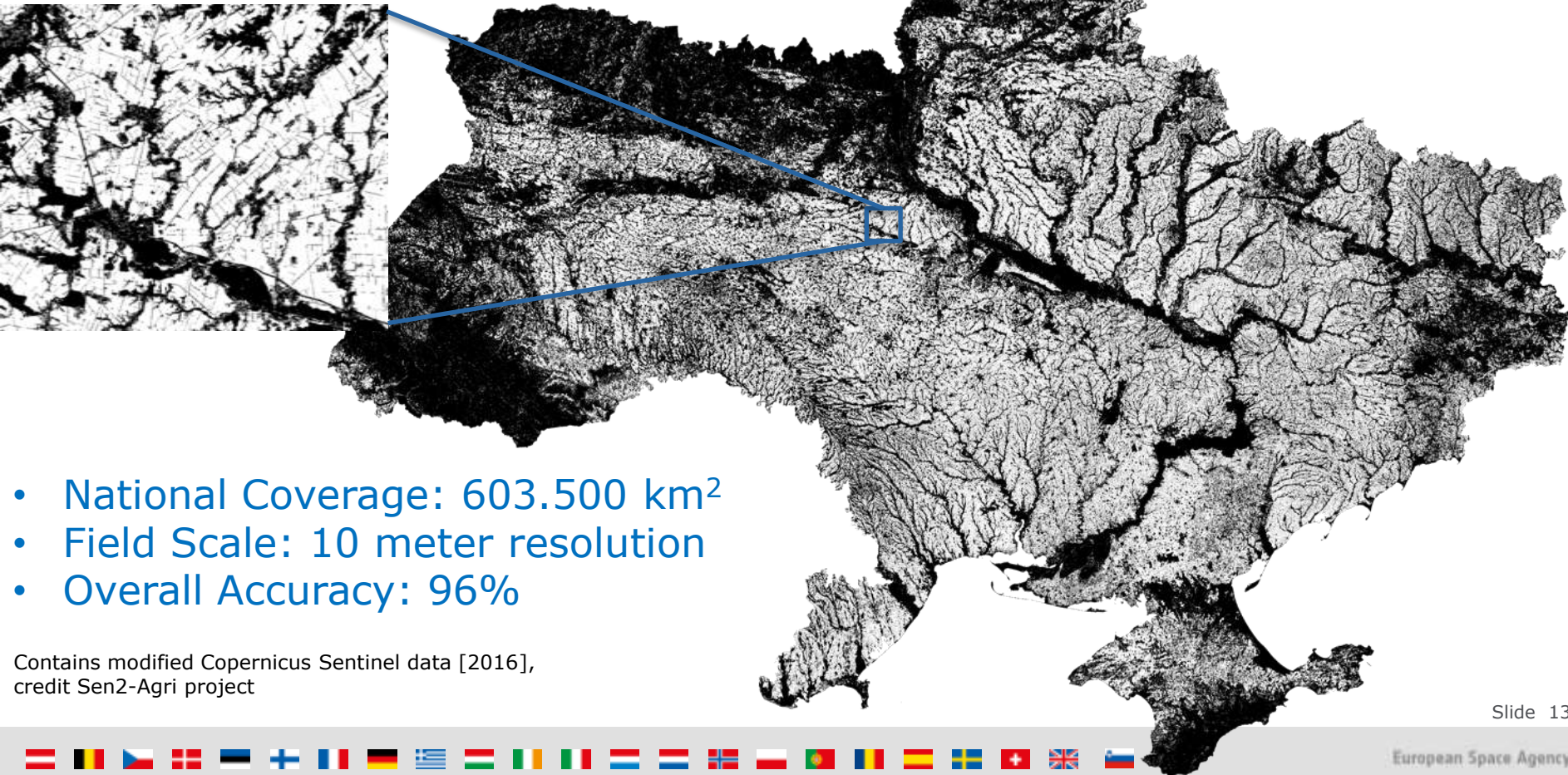


Sen2Agri: National Crop Monitoring at Field Scale

-  – international R&D cooperation
Global Agricultural Monitoring
- Open Source system for up-scaling and transfer



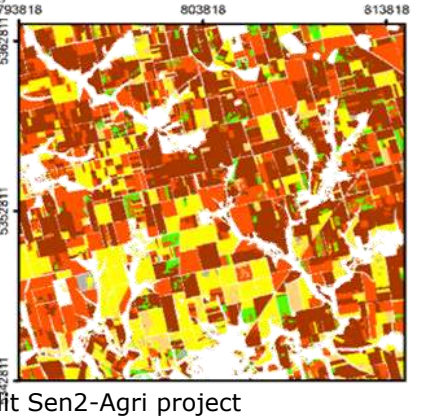
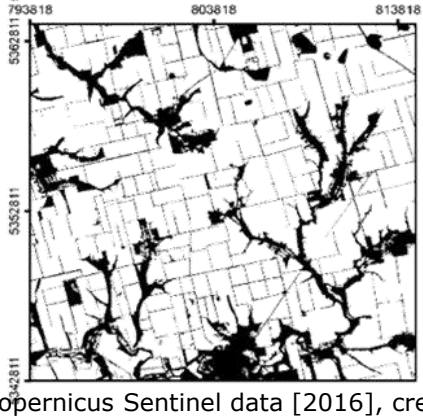
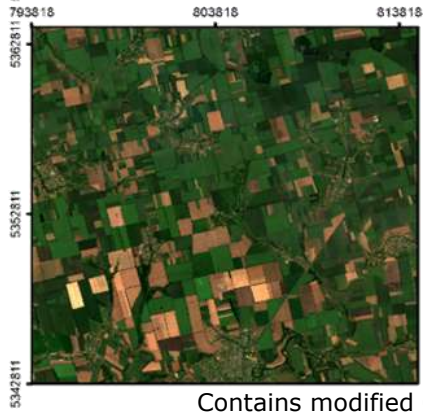
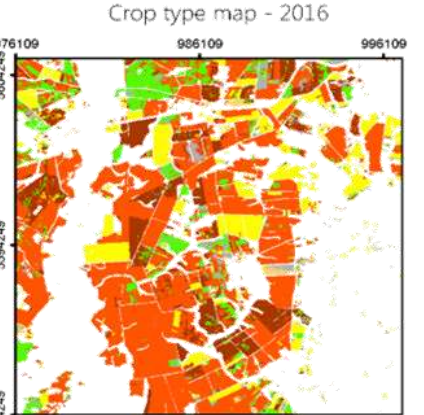
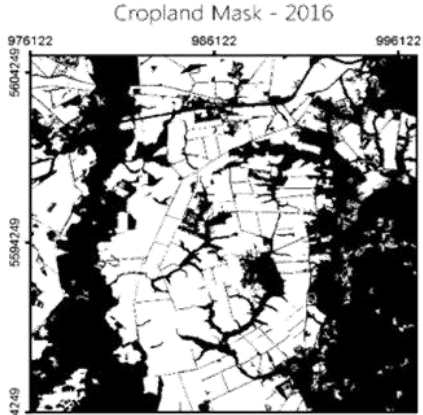
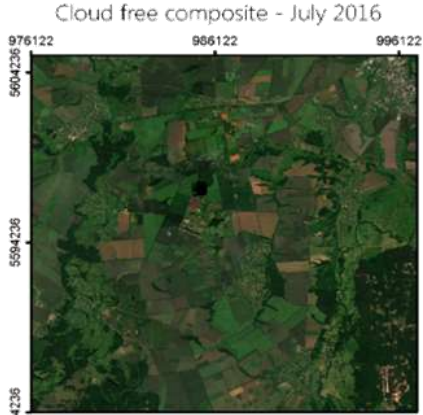
National Crop Mask - Ukraine



- National Coverage: 603.500 km²
- Field Scale: 10 meter resolution
- Overall Accuracy: 96%

Contains modified Copernicus Sentinel data [2016],
credit Sen2-Agri project

National Crop mask and type mapping at field scale Ukraine 2016

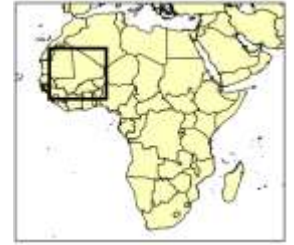
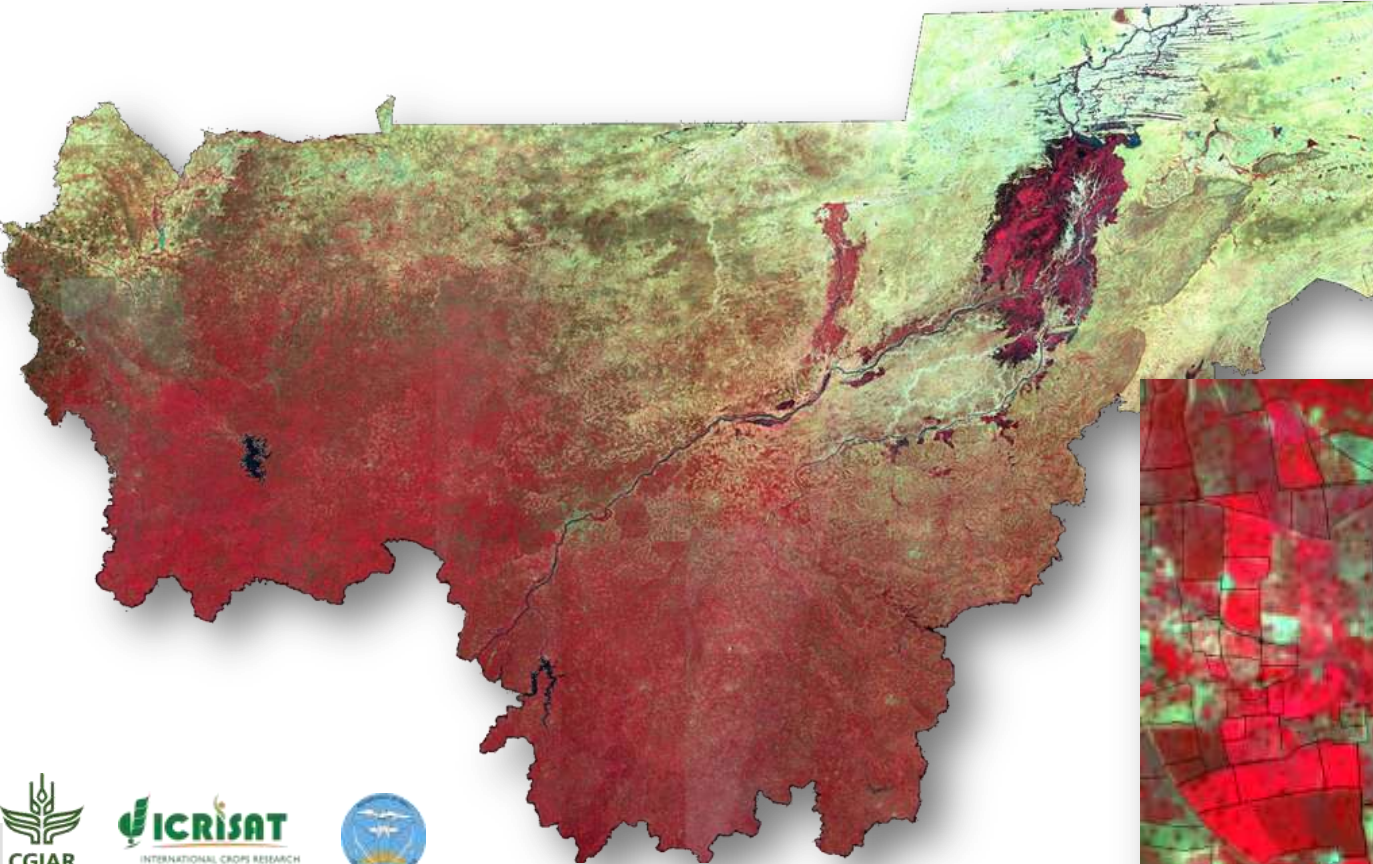


Contains modified Copernicus Sentinel data [2016], credit Sen2-Agri project

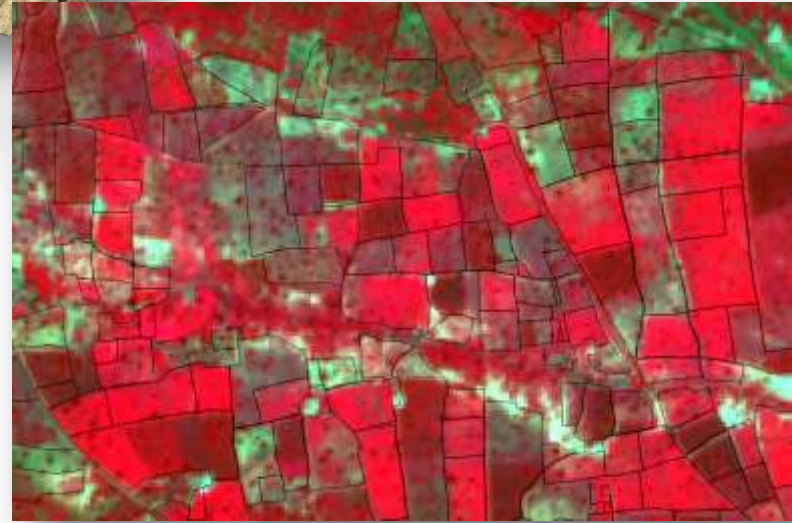
Slide 14



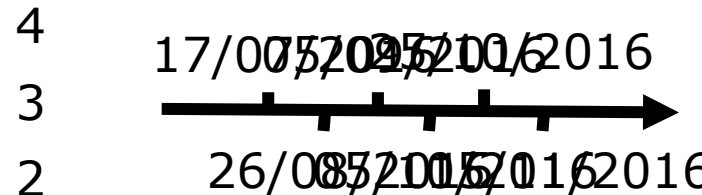
Mali: Food Insecure Country national statistics, crop damage



November 2016
5/10/2016-25/11/2016



Growth Monitoring of Cotton



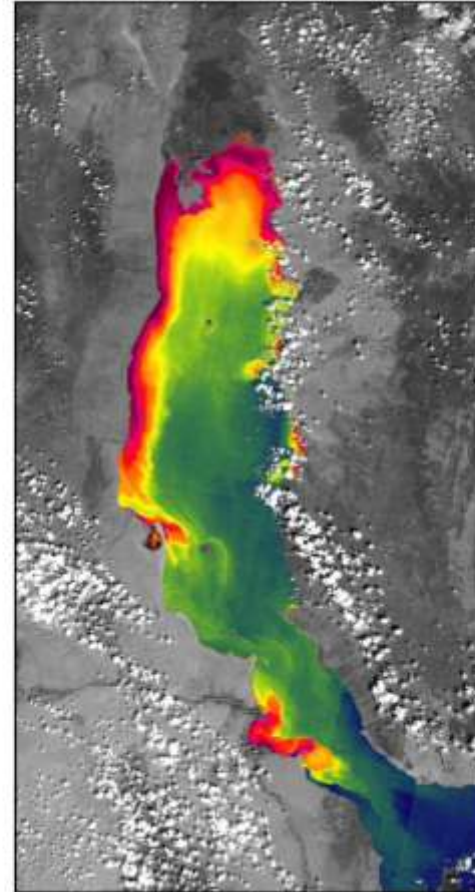
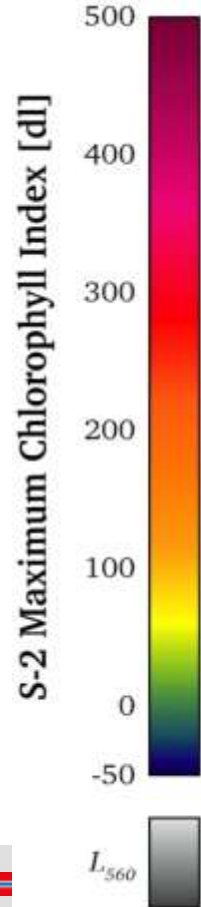
Koutiala

Water Quality Monitoring Lake Turkana, Maximum Chlorophyll Index

2015-12-09



Getintravel



I_{560}



United Nations
Environment Programme

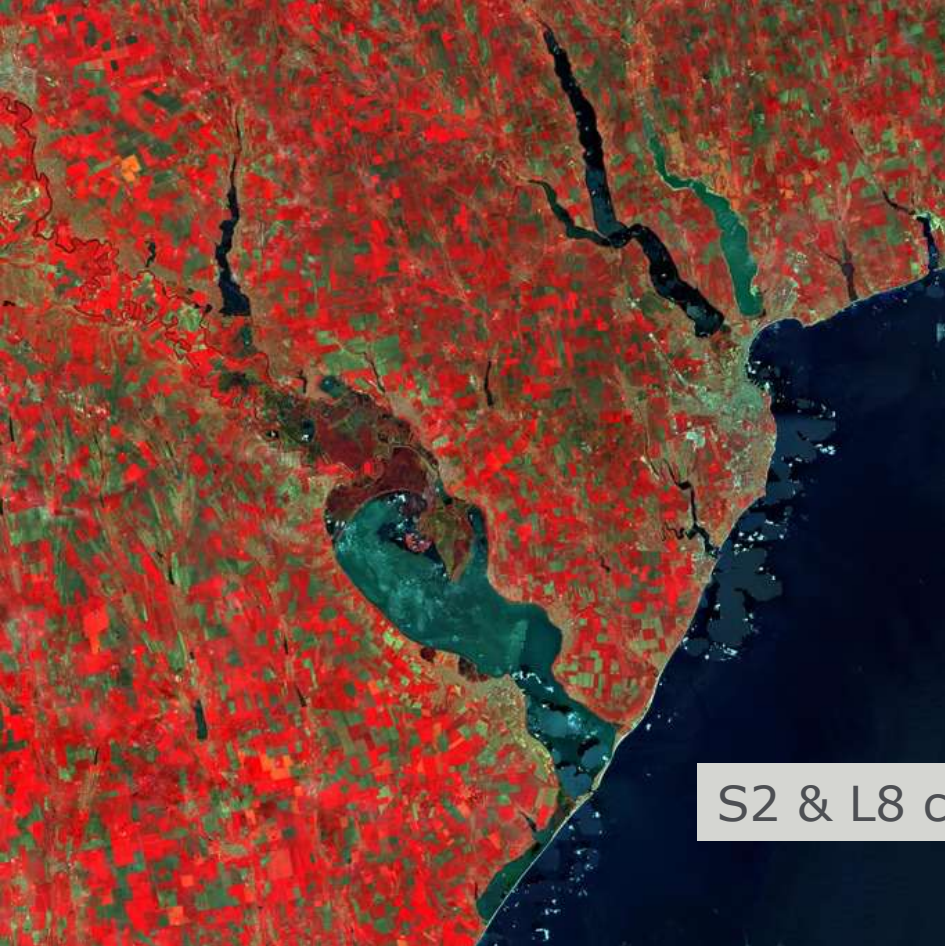


innovators
sponge

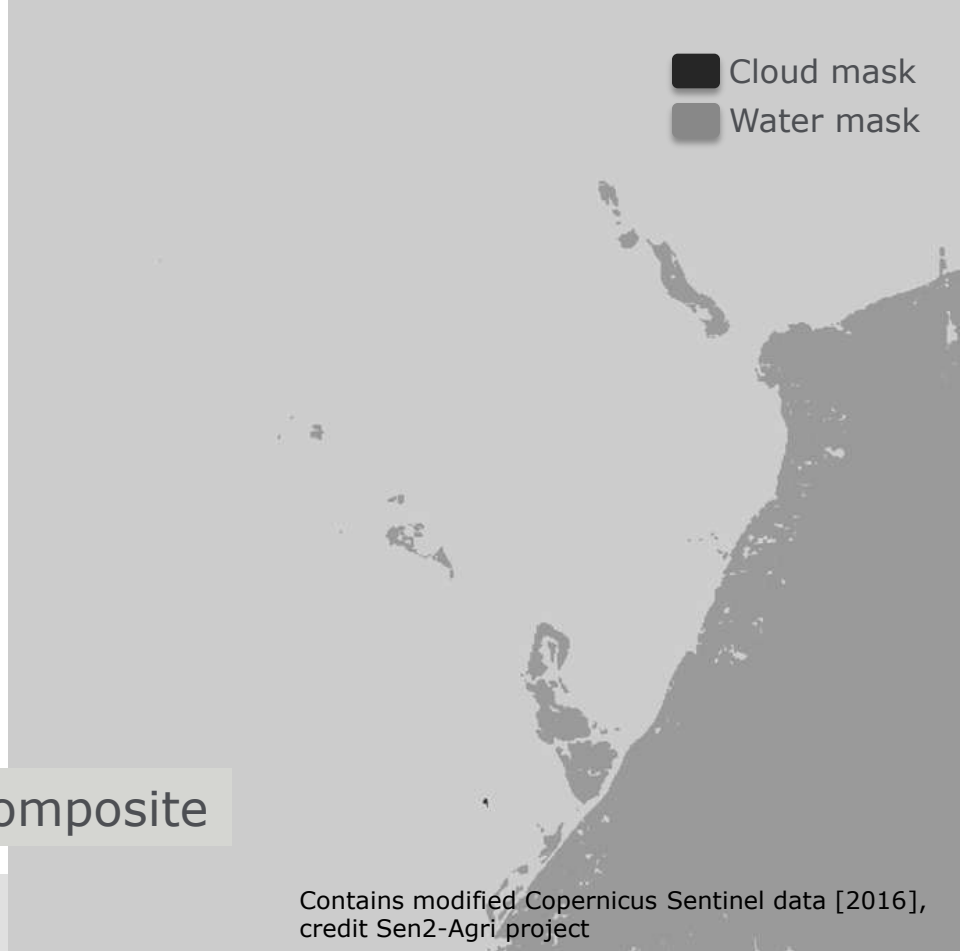
Contains modified Copernicus Sentinel data [2016]



S2 & L8 cloud free composite – improved coverage



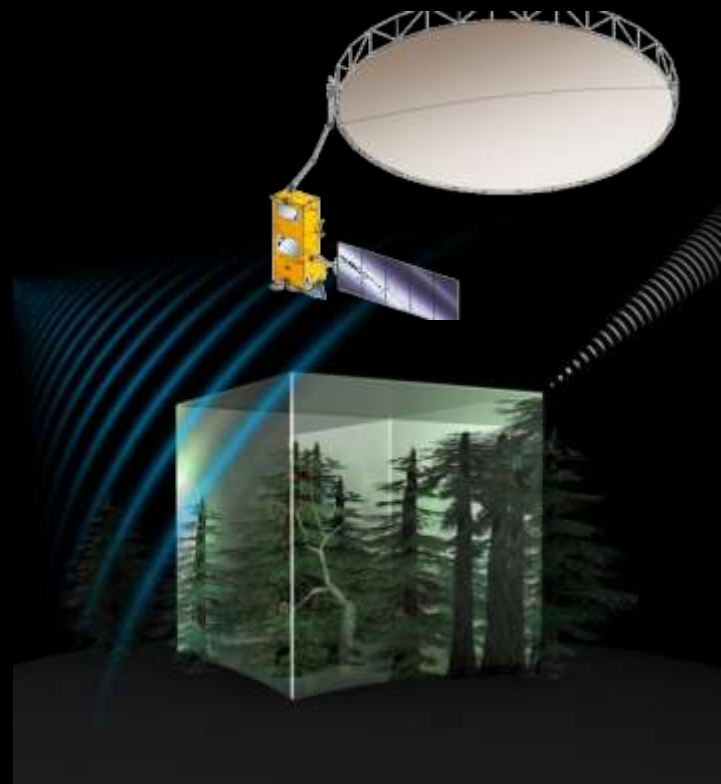
S2 & L8 composite



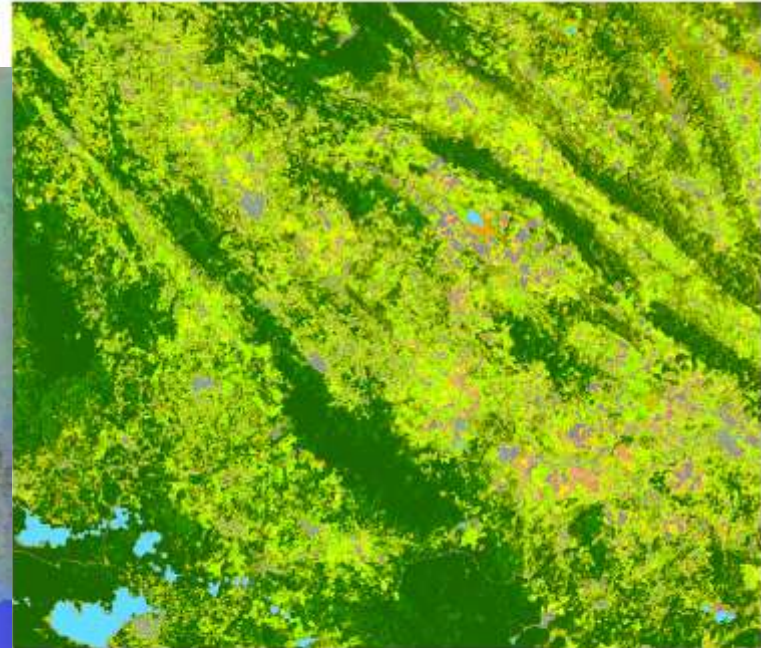
- Cloud mask
- Water mask

Further Earth Explorer Missions

- 7th Earth Explorer: Biomass
 - Biomass estimates based on global interferometric and polarimetric P-Band Radar observations
- 8th Earth Explorer: FLEX
 - global maps of vegetation fluorescence, which can be converted into an indicator of photosynthetic activity



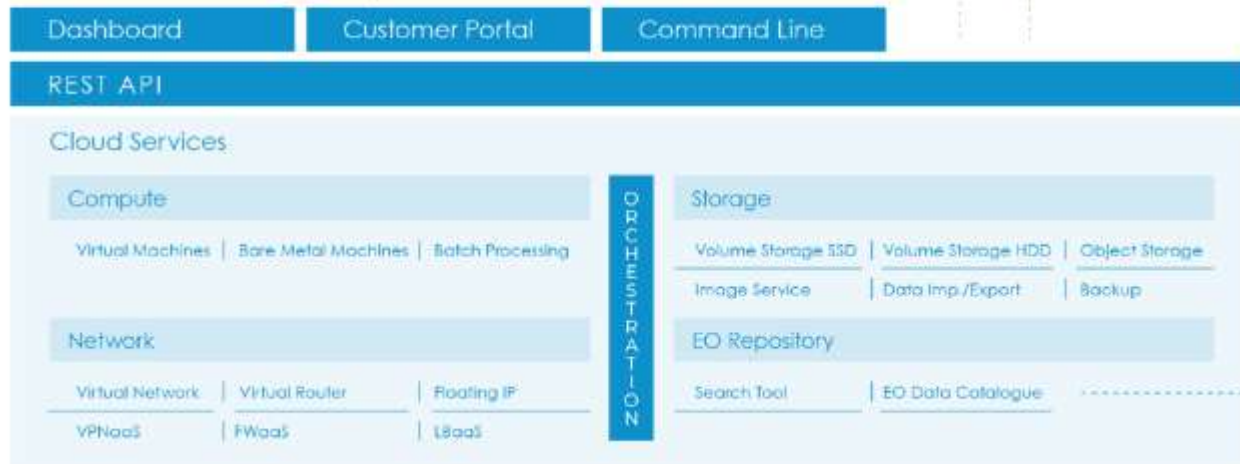
Supporting Science and Application Development



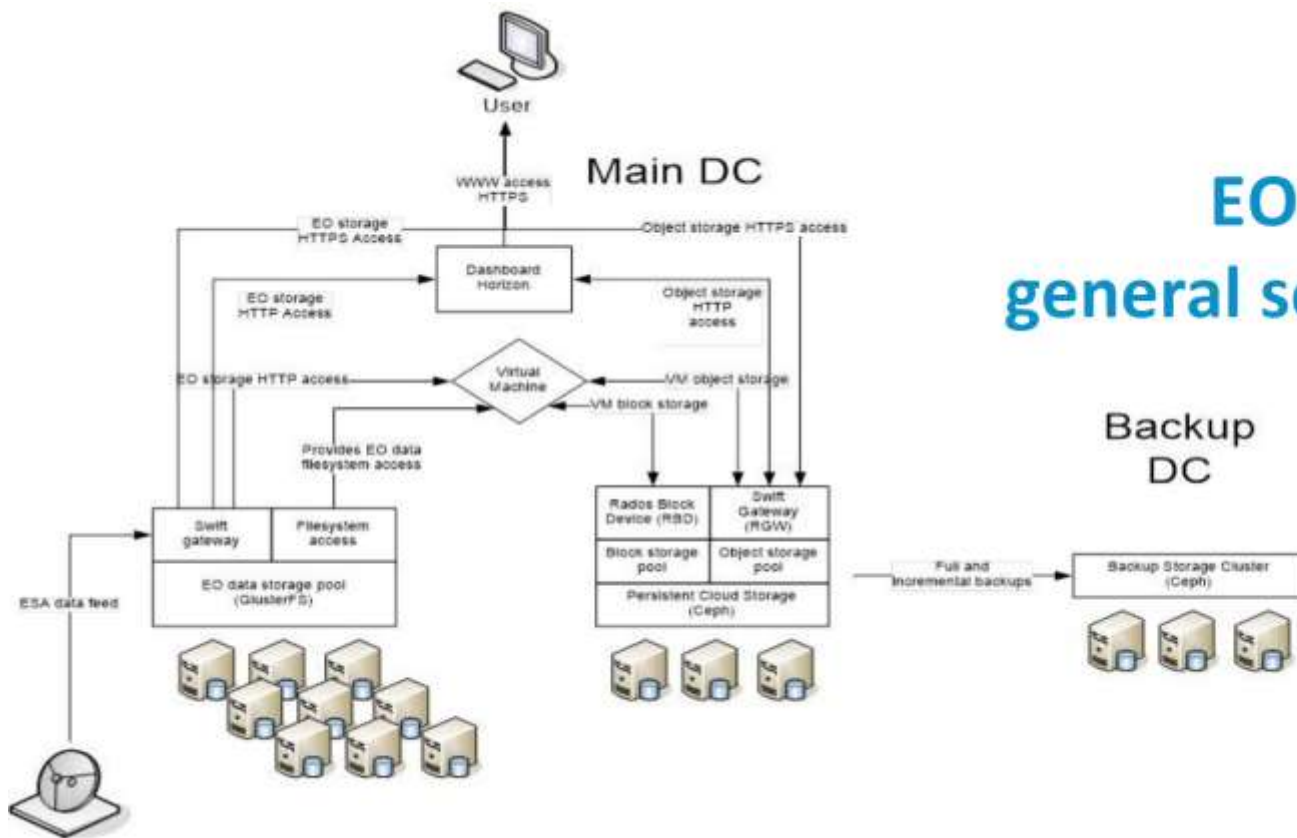
- Coniferous forest
- Broadleaved forest
- Shrub
- Grassland
- Cleared land
- Farmland
- Pasture
- Built-up, bare soil
- Water



Sentinel (and other data access) via IPT Poland



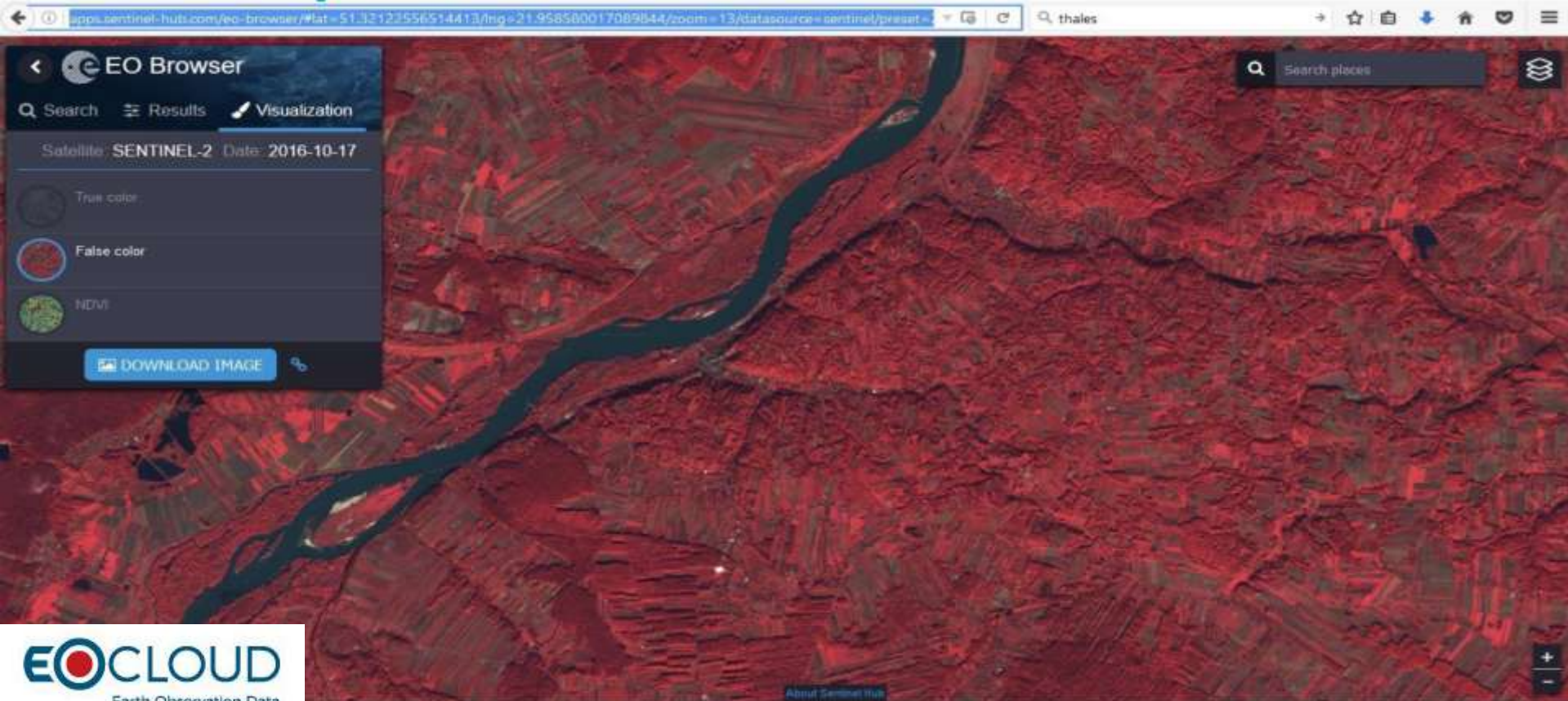
Technical implementation



EO general scheme



Use case example



EO Browser

Search Results Visualization

Satellite: SENTINEL-2 Date: 2016-10-17

True color

False color

NDVI

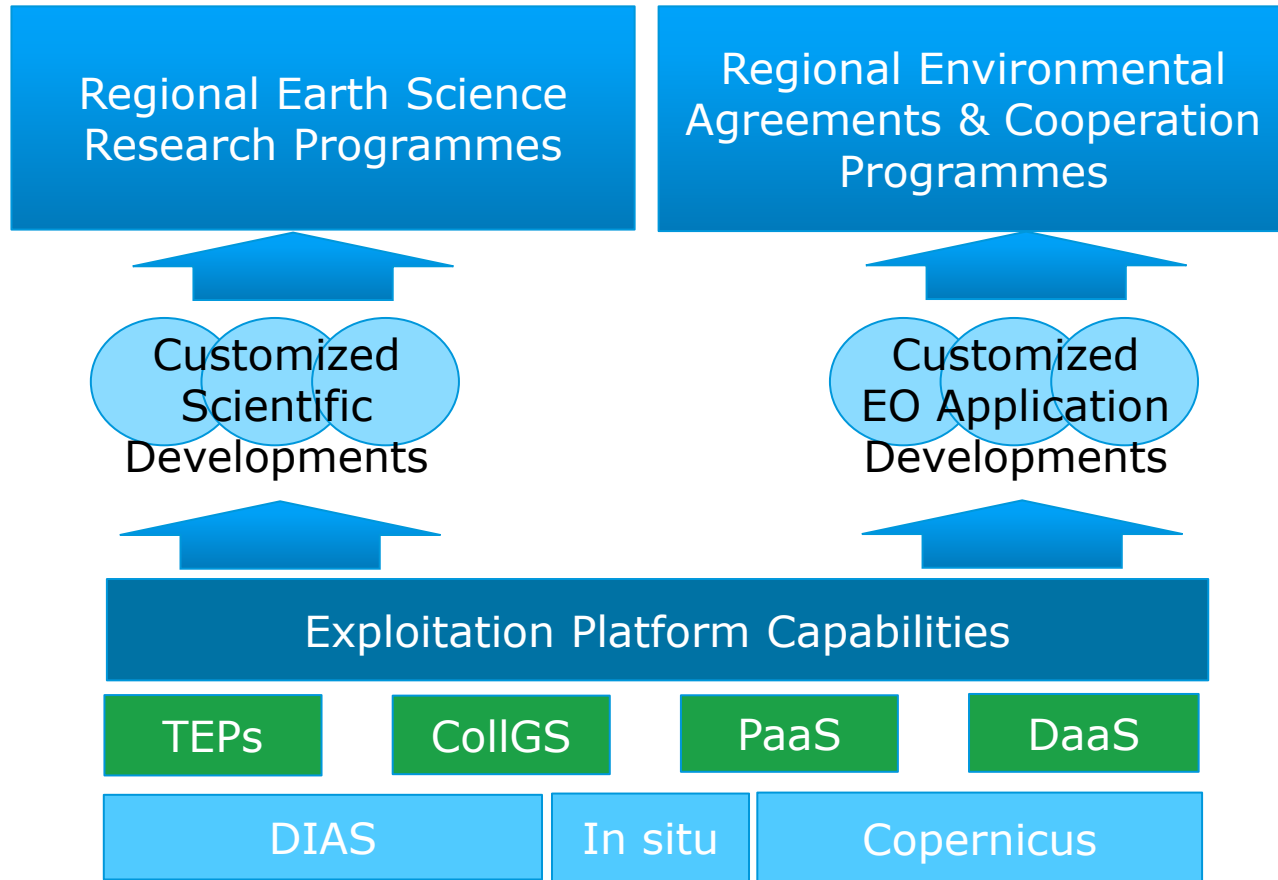
DOWNLOAD IMAGE

Search places

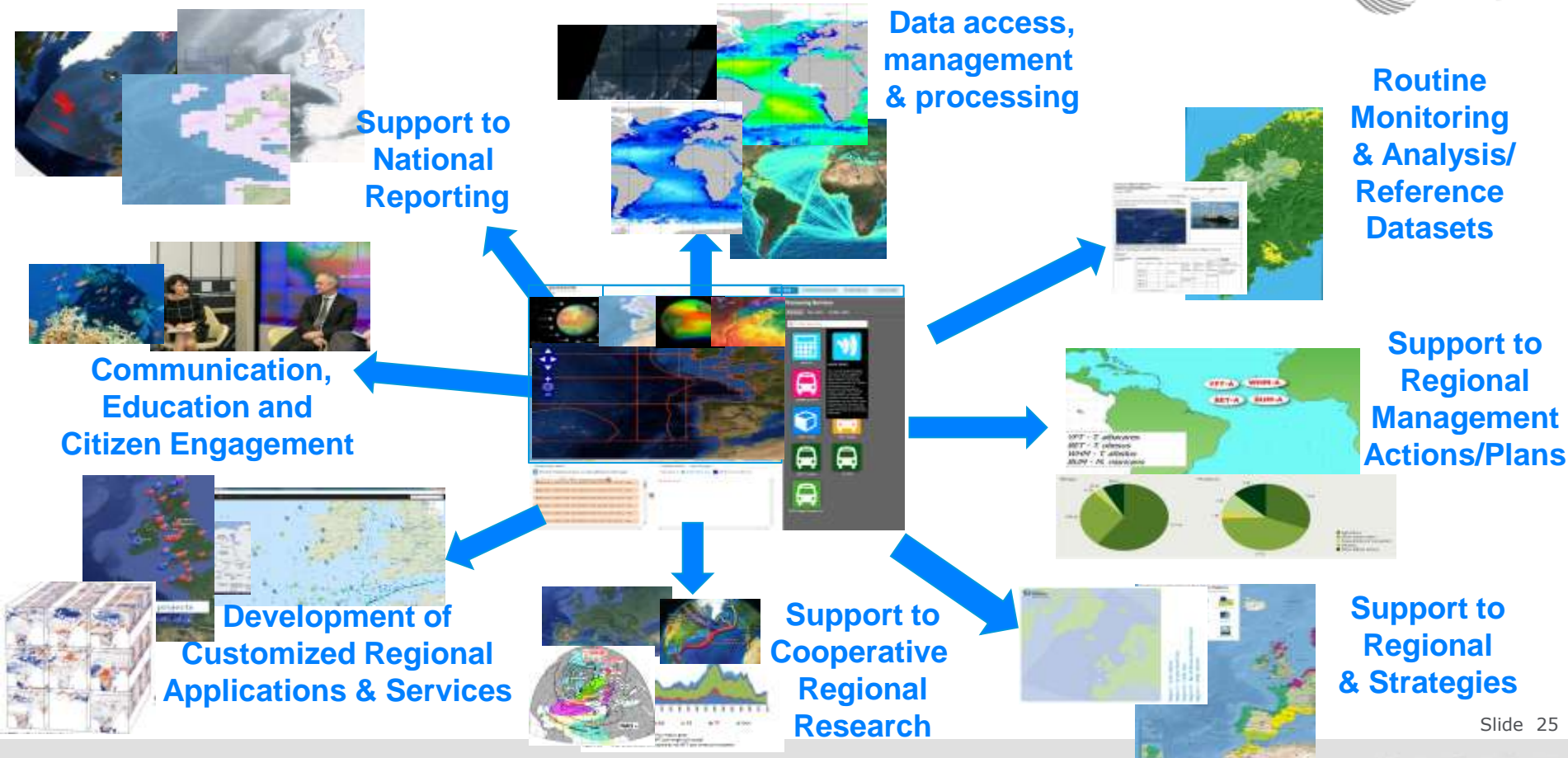
EOCLOUD Earth Observation Data

About Sentinel Hub

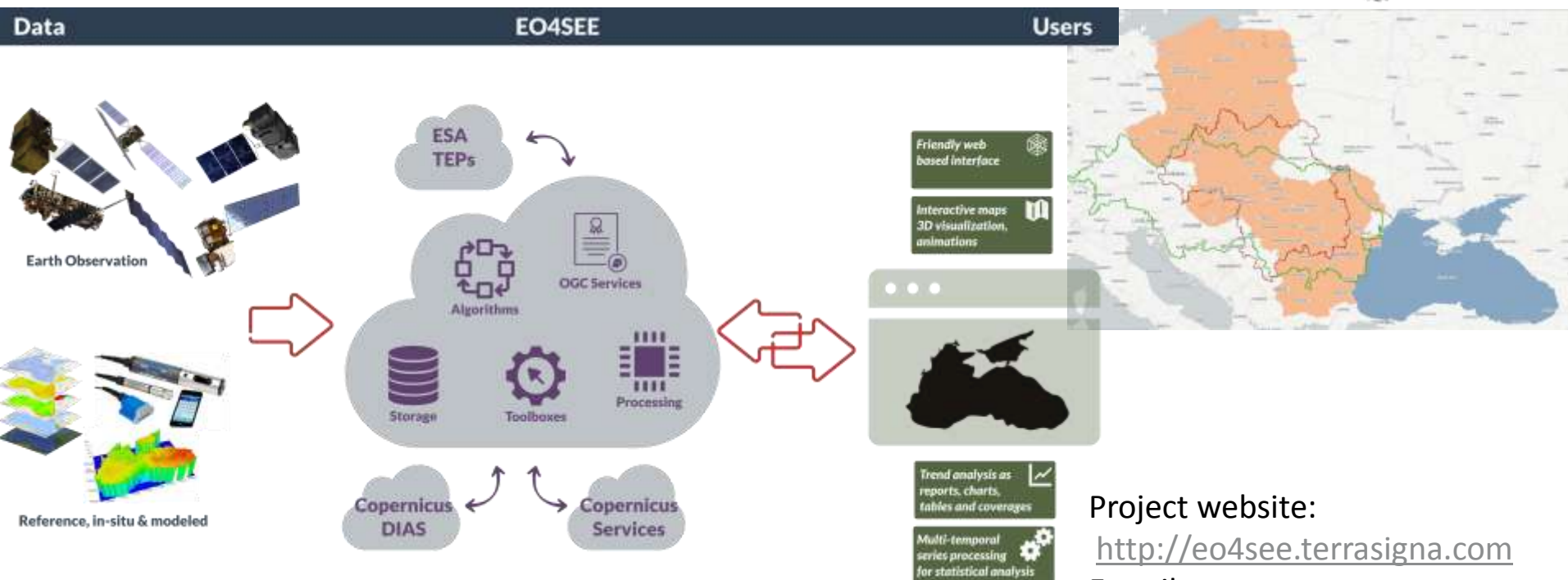
Elements of a Regional Initiative



What does a Regional Initiative enable?



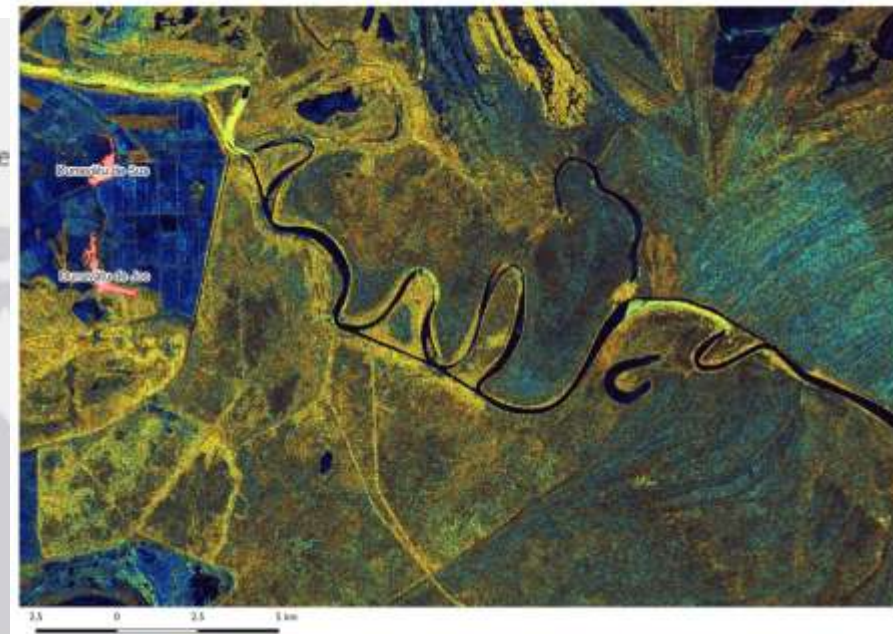
EO4SEE concept



Project website:
<http://eo4see.terrasigna.com>
E-mail:
infoeo4see@terrasigna.com



Example outputs so far



Dates for your diary



Logo of the Hungarian Space Office (HSO) and Szent István University. The ESA logo is also present. The background features a satellite image of a green landscape with a circular inset showing a different view of the same area.

**→ 7th ADVANCED TRAINING COURSE
ON LAND REMOTE SENSING**

4–9 September 2017 | Szent István University | Gödöllő, Hungary

The ESA logo is in the top right. The background is a blue and purple globe with a satellite in orbit. Various terms related to open science and data are scattered in the background, including 'OPEN DATA', 'VIRTUAL LAB', 'CLOUD', 'CITIZENS', 'MOOC', 'COLLABORATION', 'LEARNING', 'SCIENCE', 'BLOGS', 'TOOLBOXES', 'MAGNETON', 'NEW', 'VIRTUAL LAB', 'CITIZENS', 'MOOC', 'CLOUD', 'CITIZENS', 'LEARNING', 'SCIENCE', 'BLOGS', 'TOOLBOXES', 'MAGNETON', 'NEW'.

→ EO OPEN SCIENCE 2017

25–28 September 2017
ESA-ESRIN | Frascati (Rome), Italy

European Space Agency



Thank you for your attention!

www.esa.int