



Thermal properties of urban landscape

Global Change Research Institute

Czech Academy of Sciences

Brno, Czech Republic

František Zemek, Olga Brovkina

Marek Pivovarník, Jan Novotný

CzechGlobe RS activities

Forestry

- Biochemical properties, RT modelling (HS, LiDAR)
- Biomass estimation (airborne HS, LiDAR data)

Agriculture

- Soil properties (VNIR, SWIR, TIR)
- Green biomass properties (VNIR, SWIR)

Urban

- Thermal properties – structure (airborne HS, TIR, LiDAR data)

Field and laboratory measurements: spectral properties, emissivity, temperature



75,8°C

75

70

65

60

55

50

45

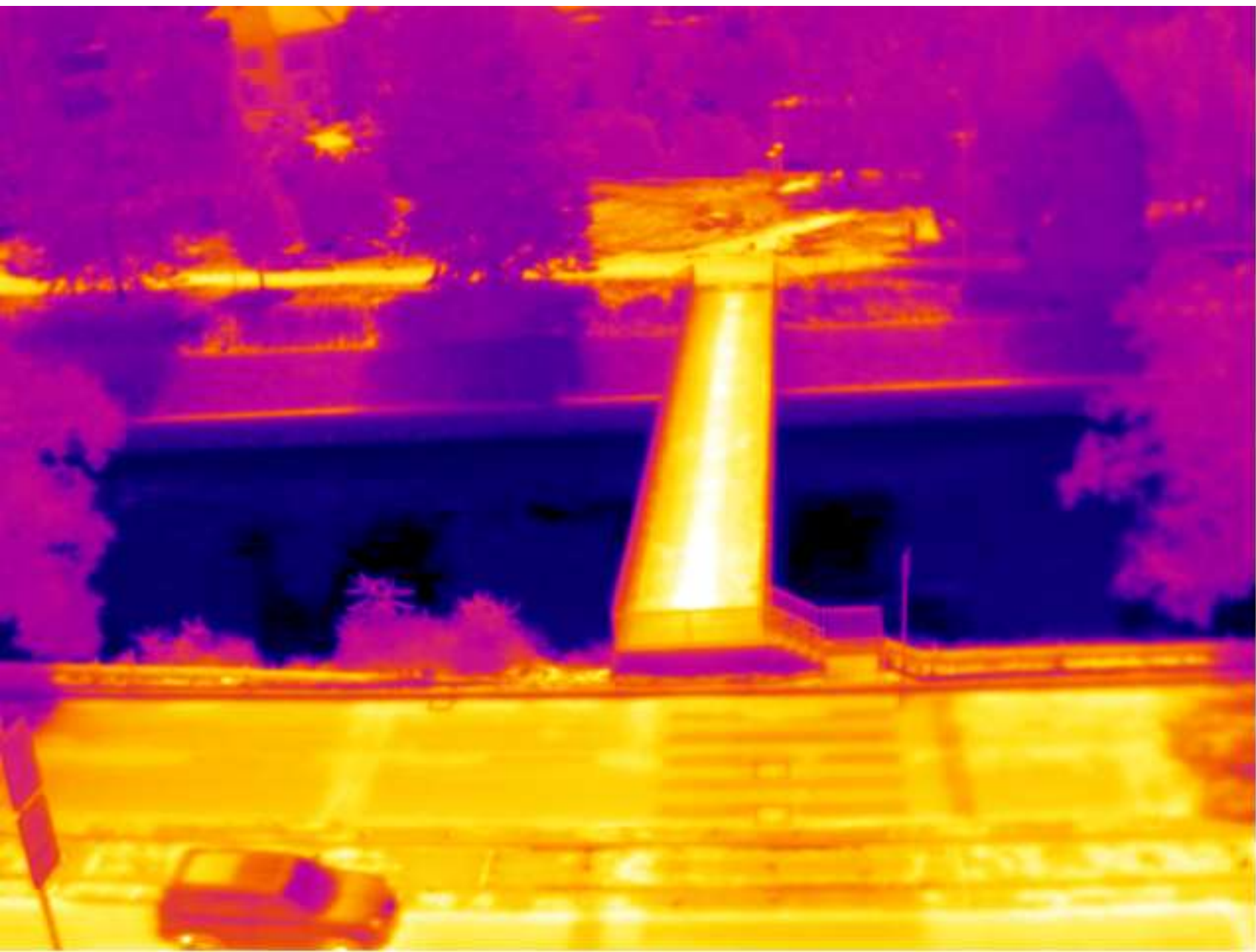
40

35

30

29,8°C





53,7°C

50

45

40

35

30

25

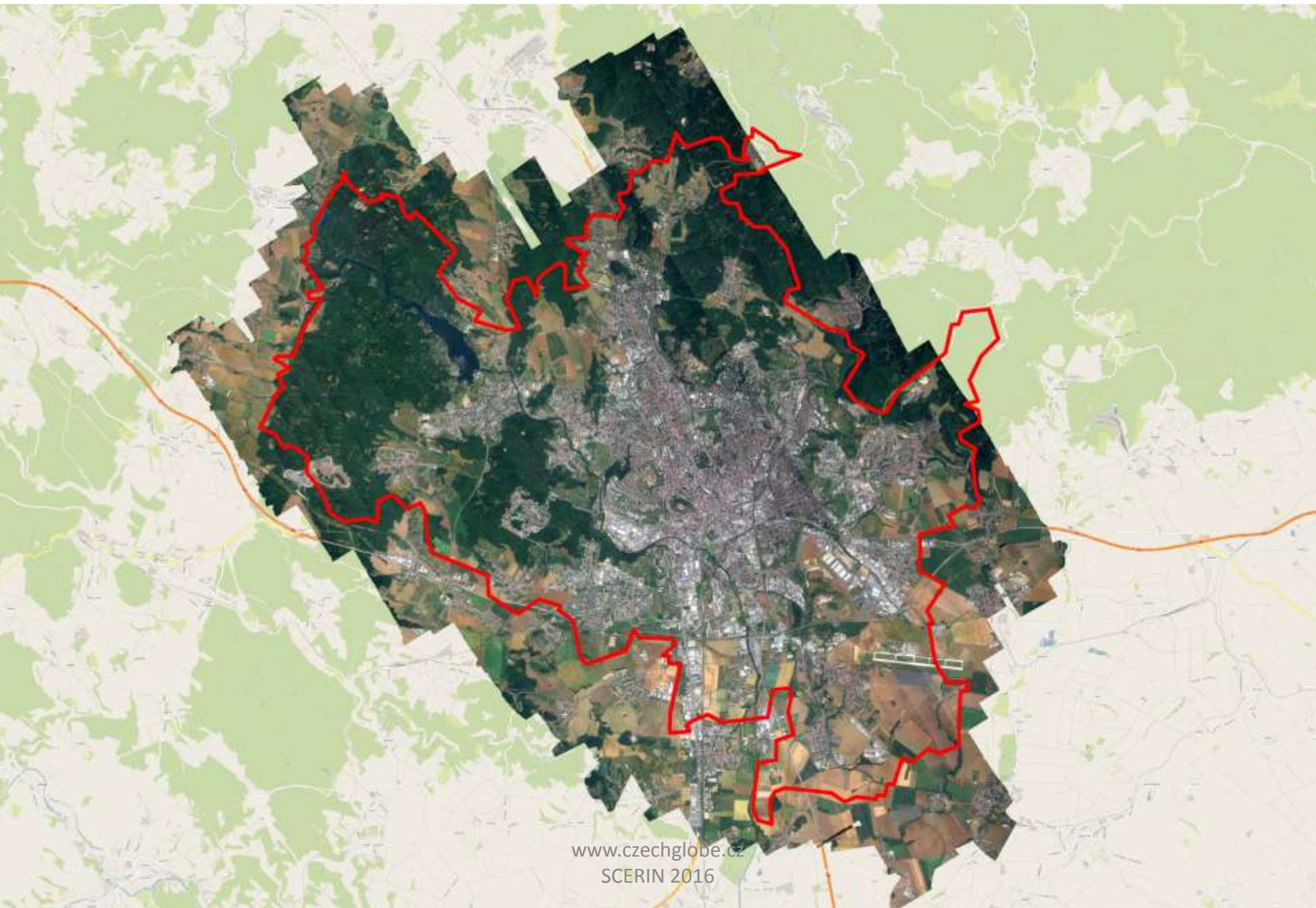
23,5°C

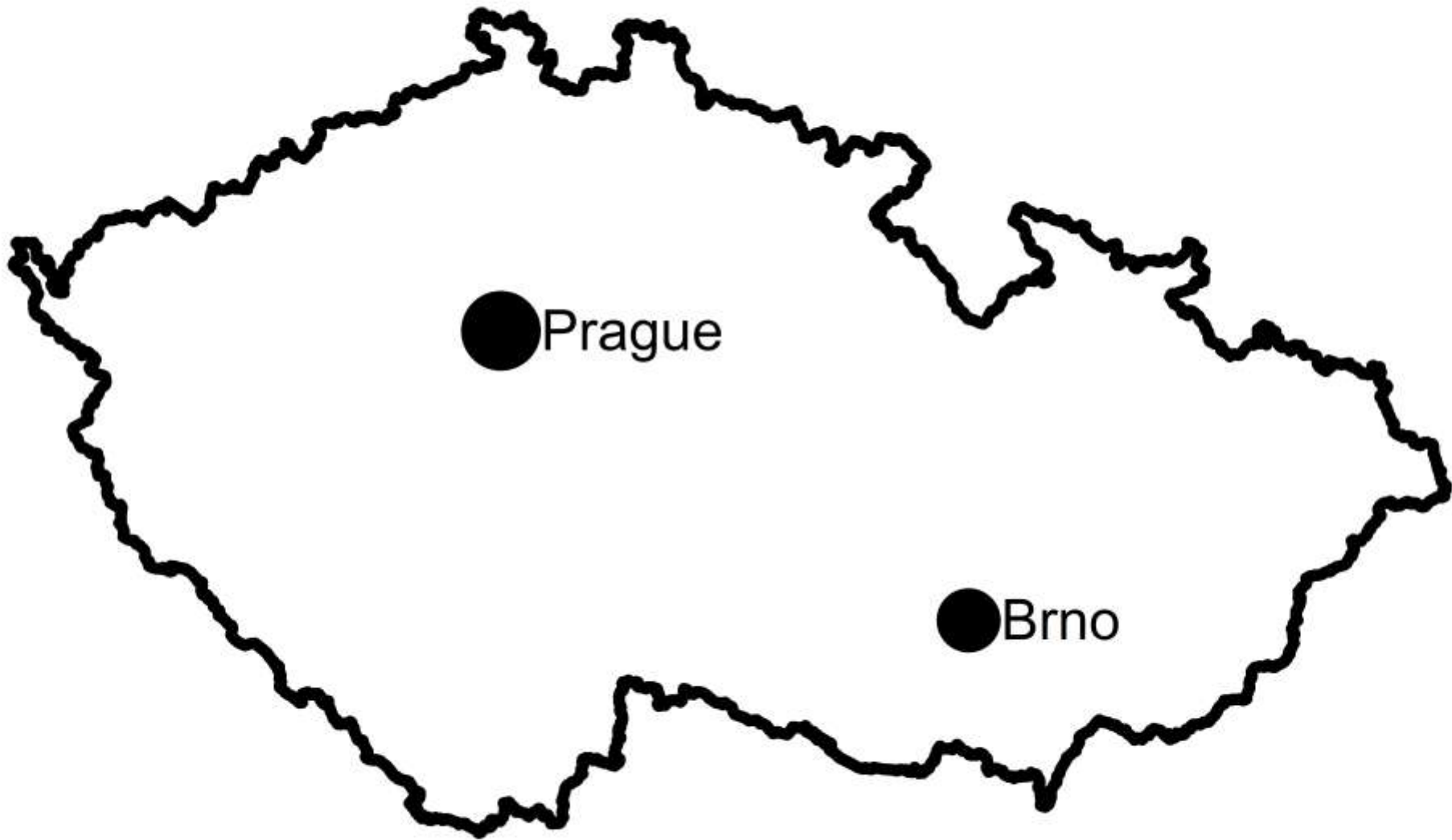


Aims

- Identification of relationships between structural features and thermal regime of urban landscape
- To support town planning with spatial quantitative information

Brno town cadaster





Objectives and expected outputs

- Map of temperature distribution in winter and summer time
- Map of land cover and 3D model of the Brno town
- Map of town greenery and its impact on thermal regime of build-up areas; health status of trees
- Modelling relationships between **town greenery**, open water bodies, build-up areas and **thermal regime** of town

Flying Laboratory of Imaging Systems



Visible and near infra-red
imaging spectroscopy



CASI-1500



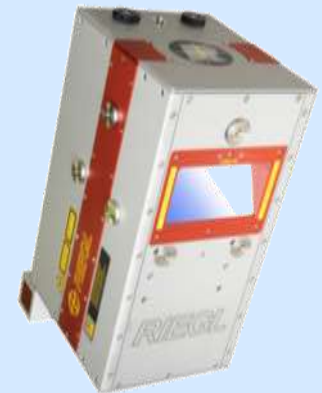
SASI-600

Thermal imaging
spectroscopy



TASI 600

Laser scanning



Riegl LMS – Q780

Data acquisition

Feb. 7th 2015

20:30 – 22:15

TASI (1m, 4m)

July 4th

9:30 – 15:00

CASI (0,5; 1m), SASI (1; 2m),

21:30 – 23:15

TASI (1; 2; 4m)

July 7th

21:30 – 23:15

TASI (1; 2m)

September 15th

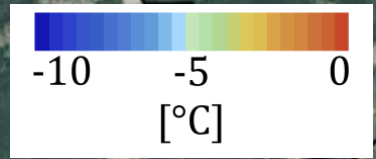
10:00 – 15:00

LiDAR (Riegl, Q680i)

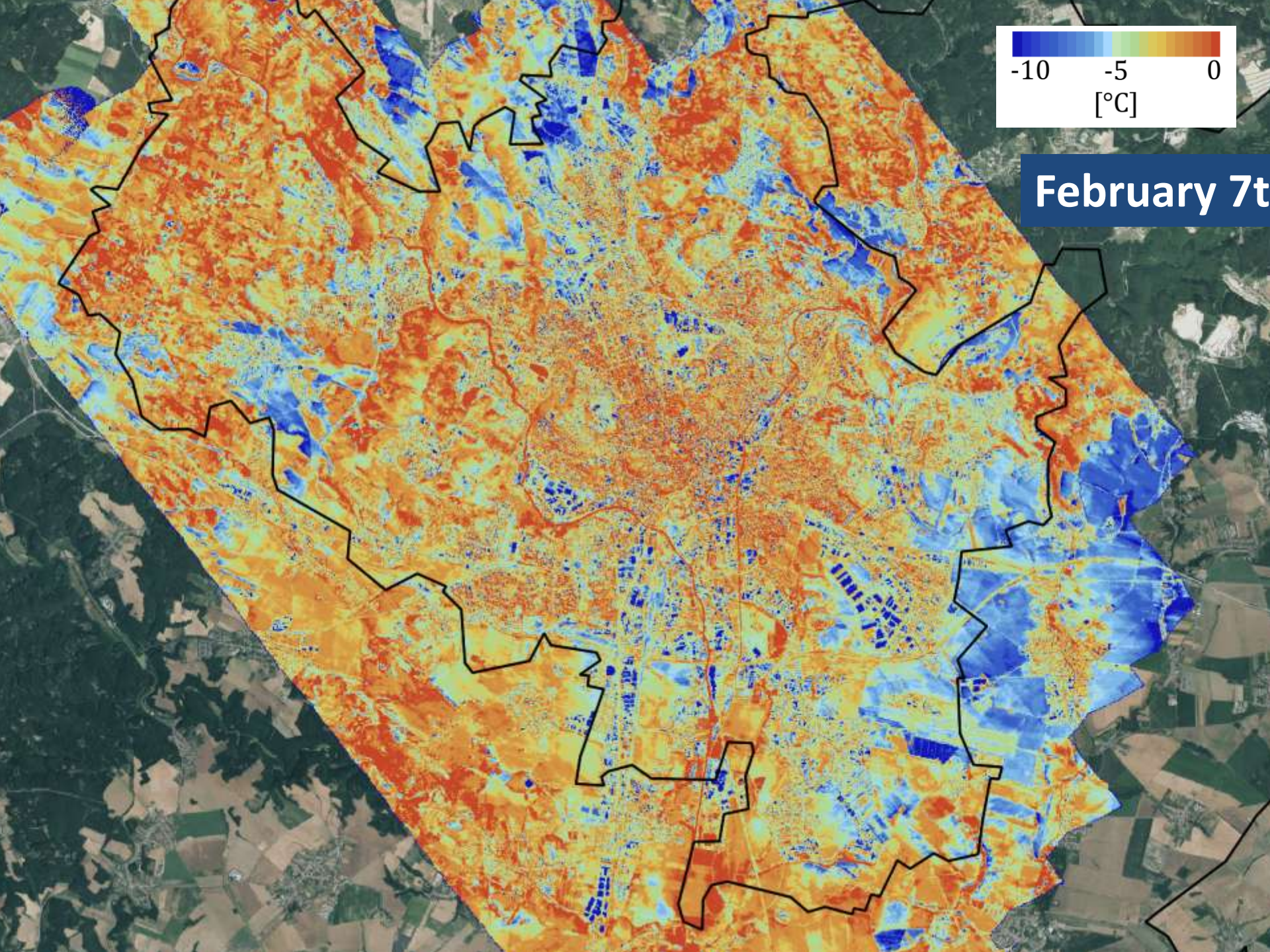
Field spectral

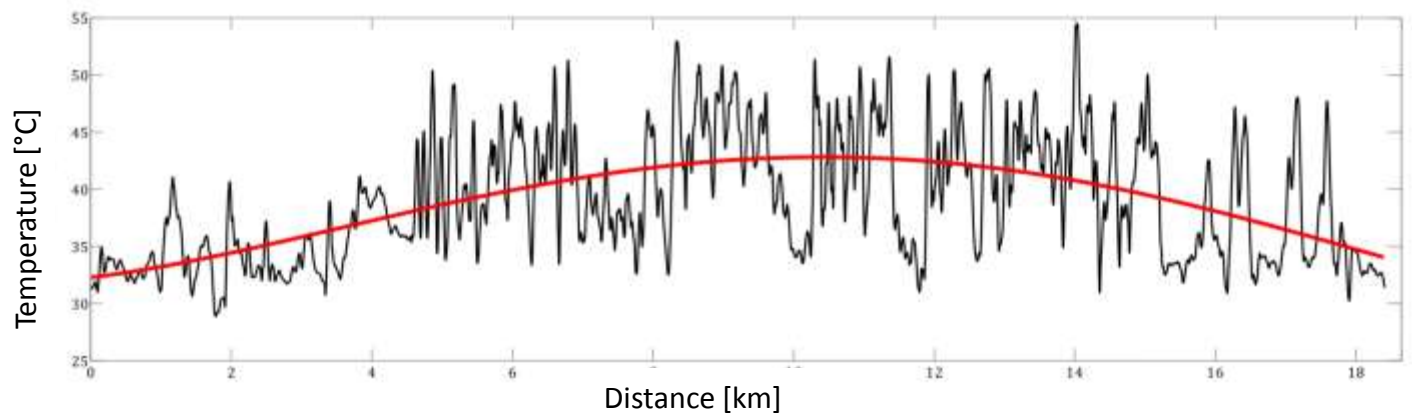
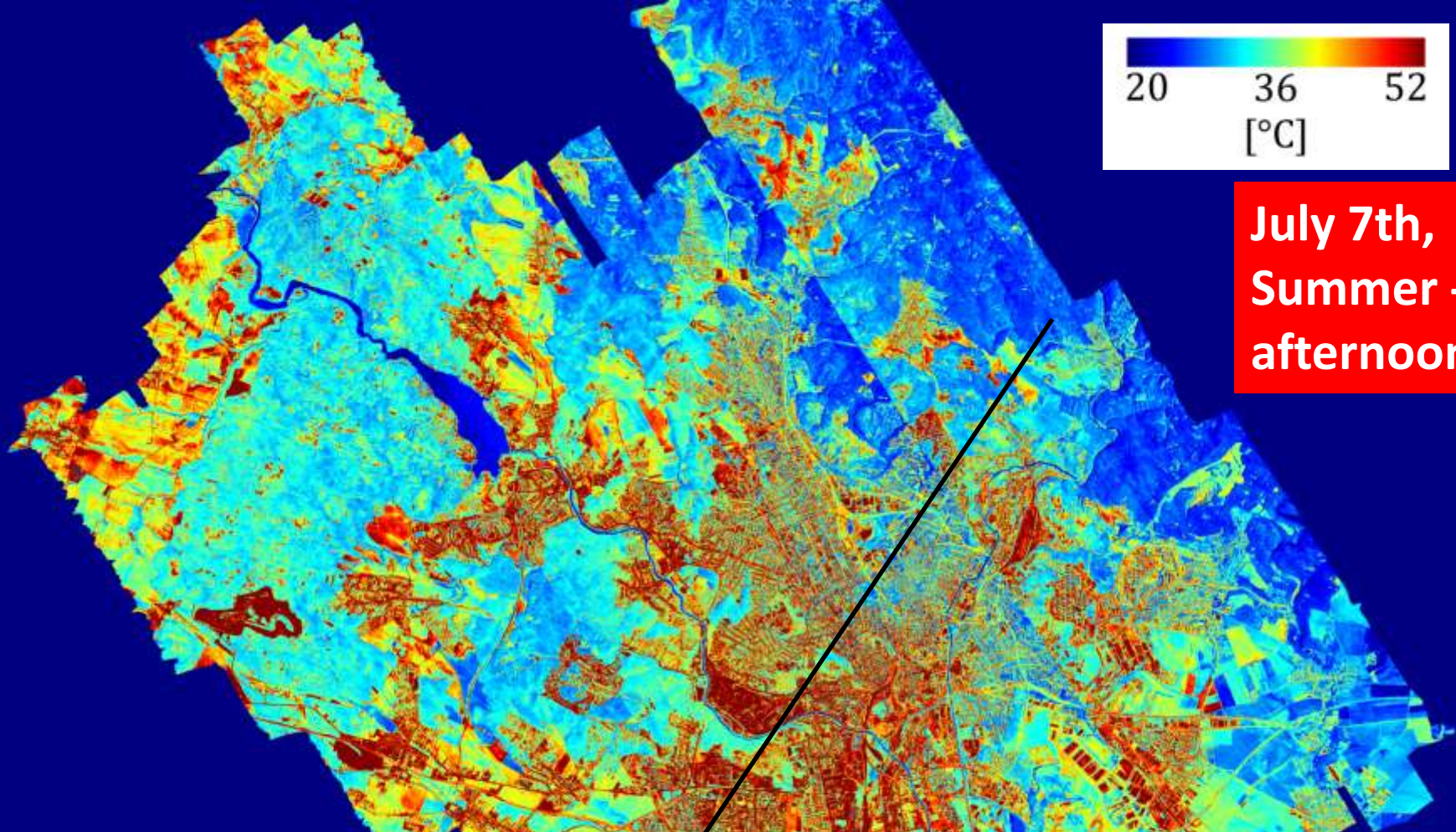
Fieldspec ASD

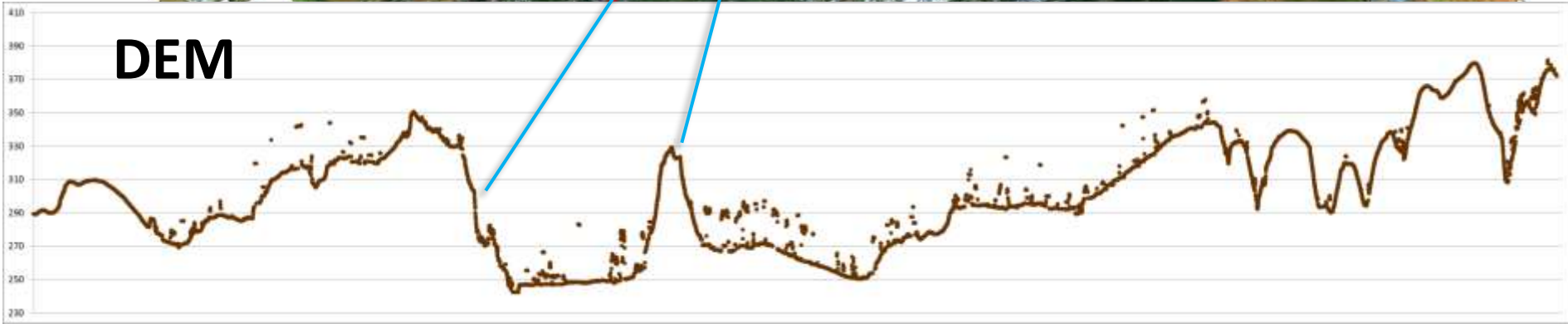
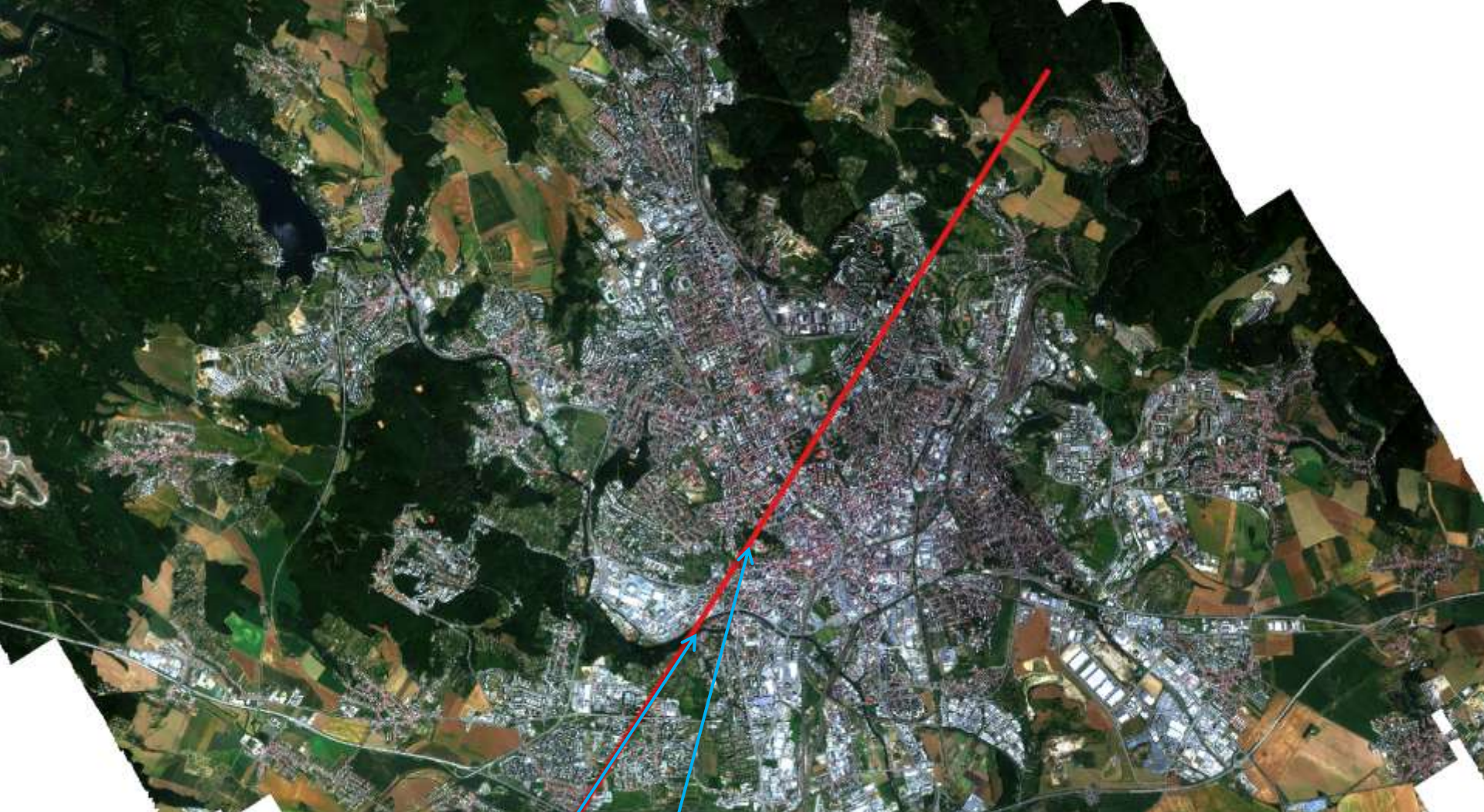
Emissivity/temperature FTIR

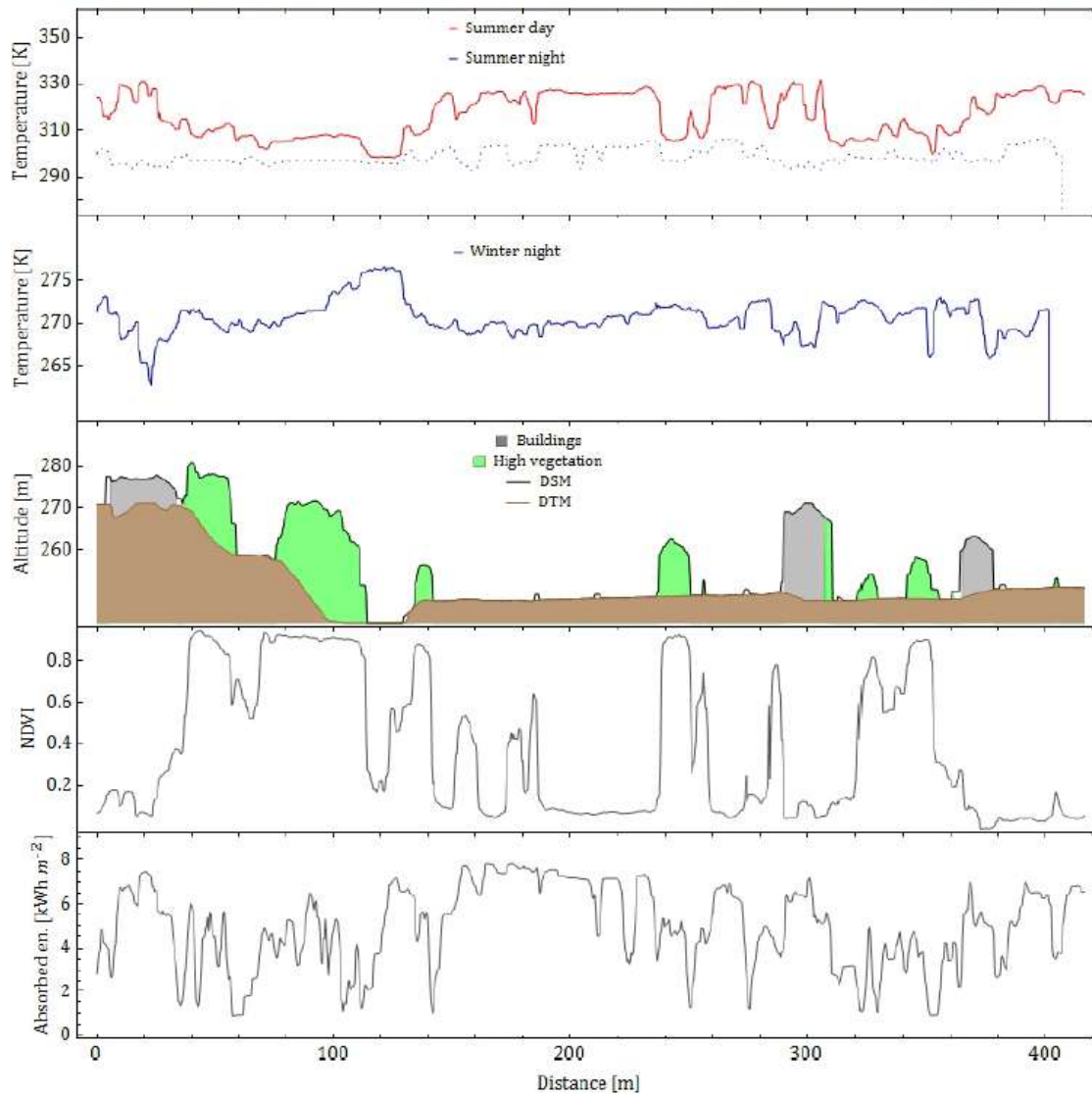


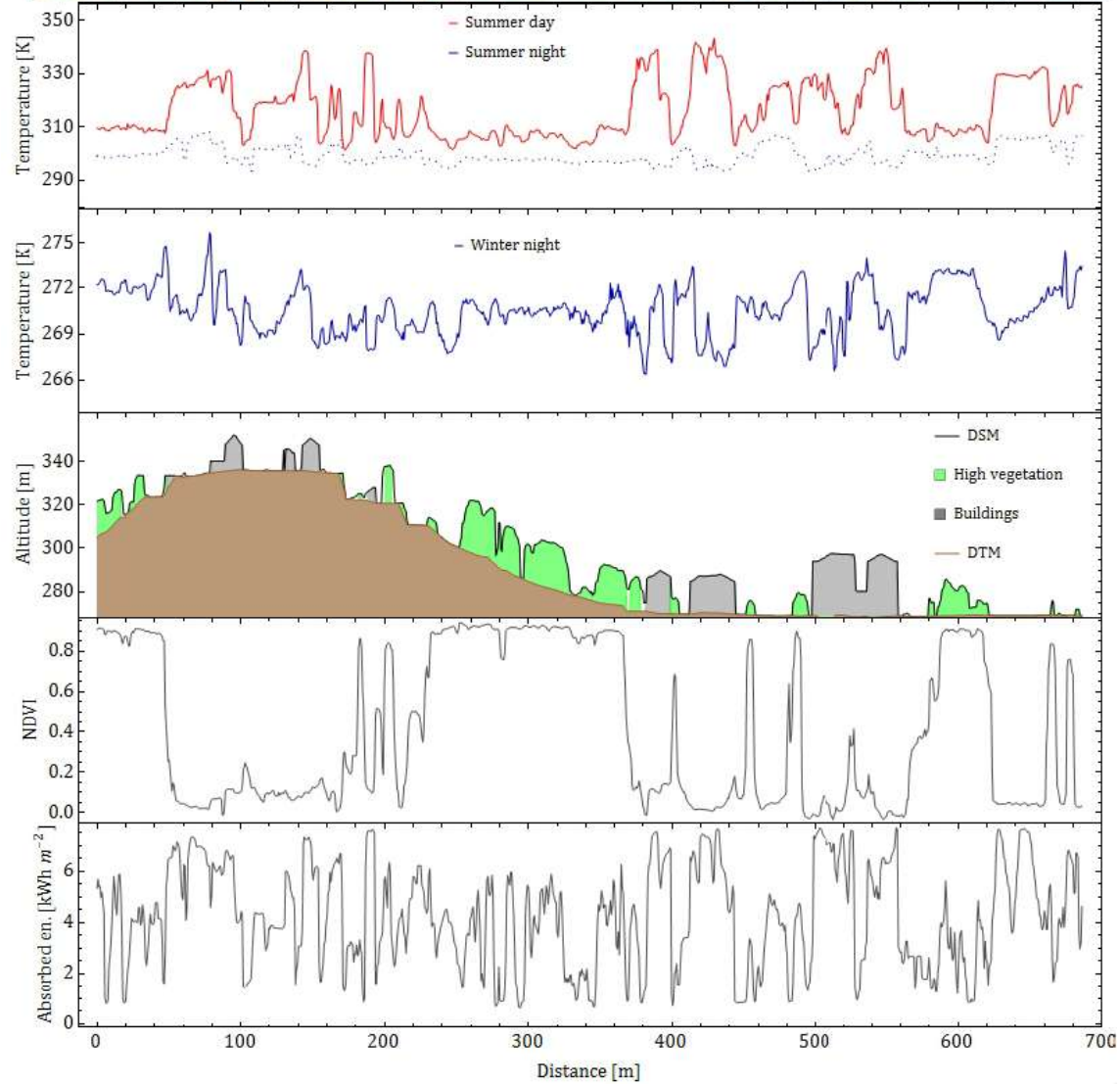
February 7t







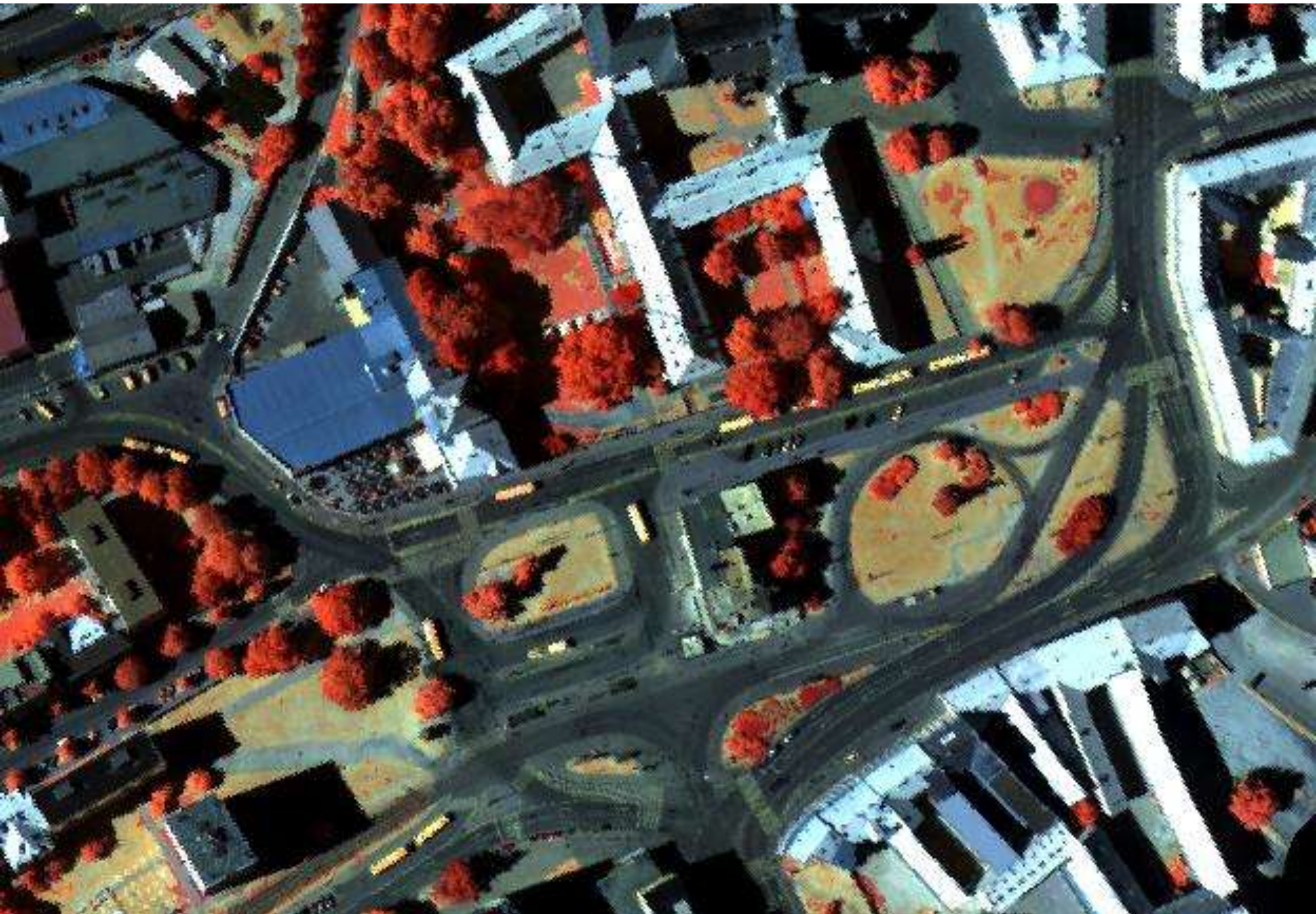




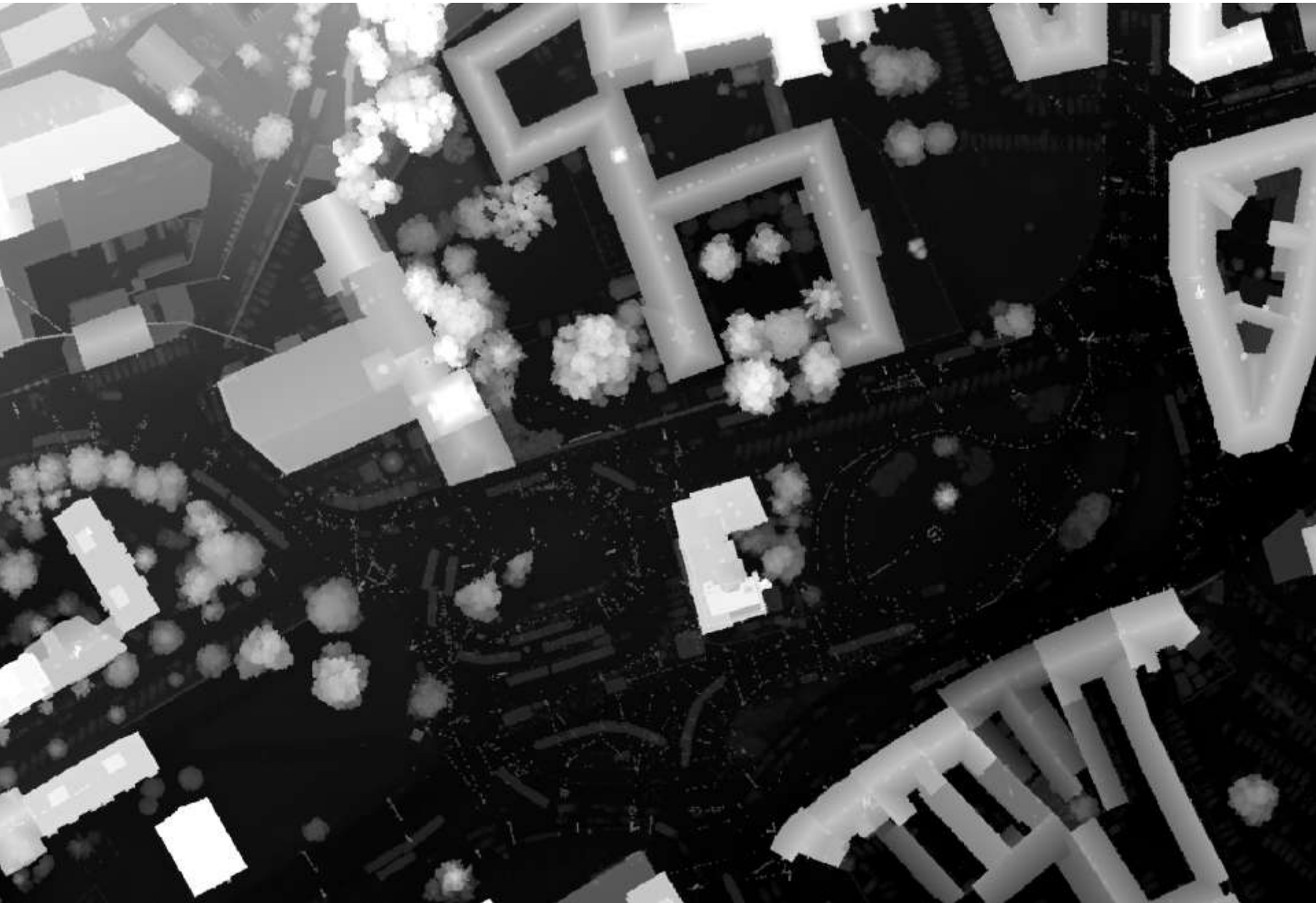
SASI – VNIR (RGB) summer afternoon



SASI – SWIR, summer afternoon



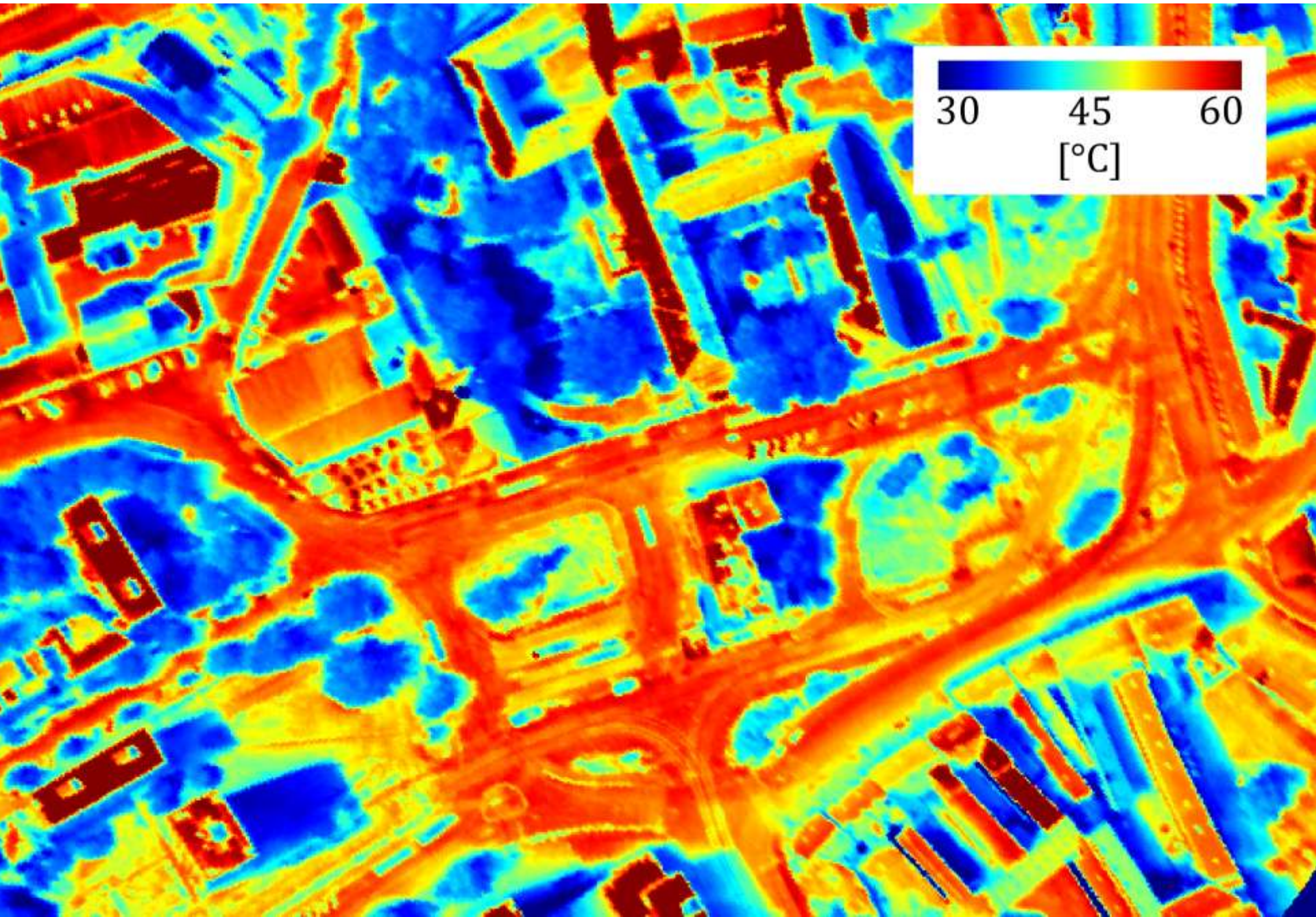
DSM from LiDAR data



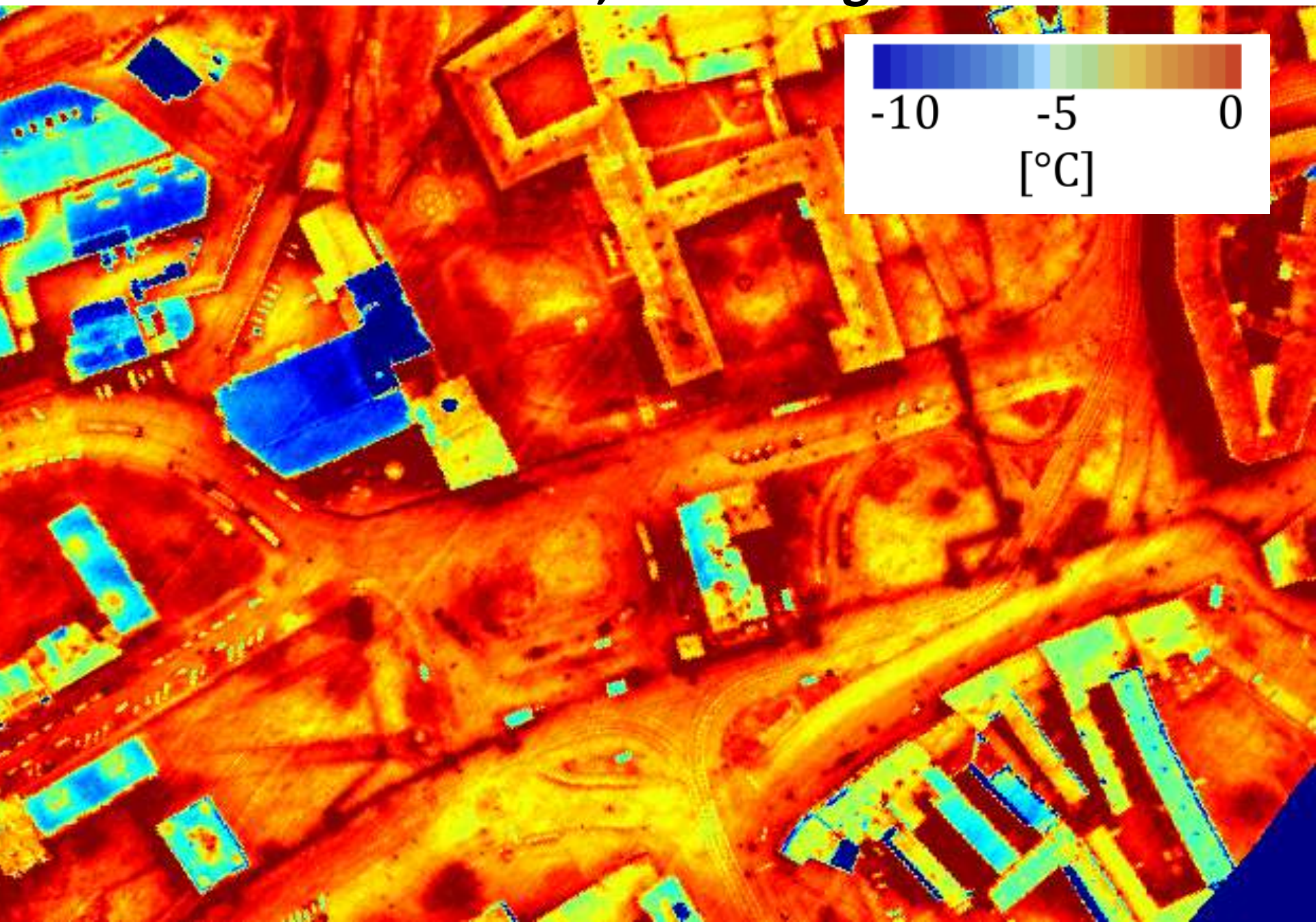
3-D model from LiDAR data



TASI – TIR, summer afternoon

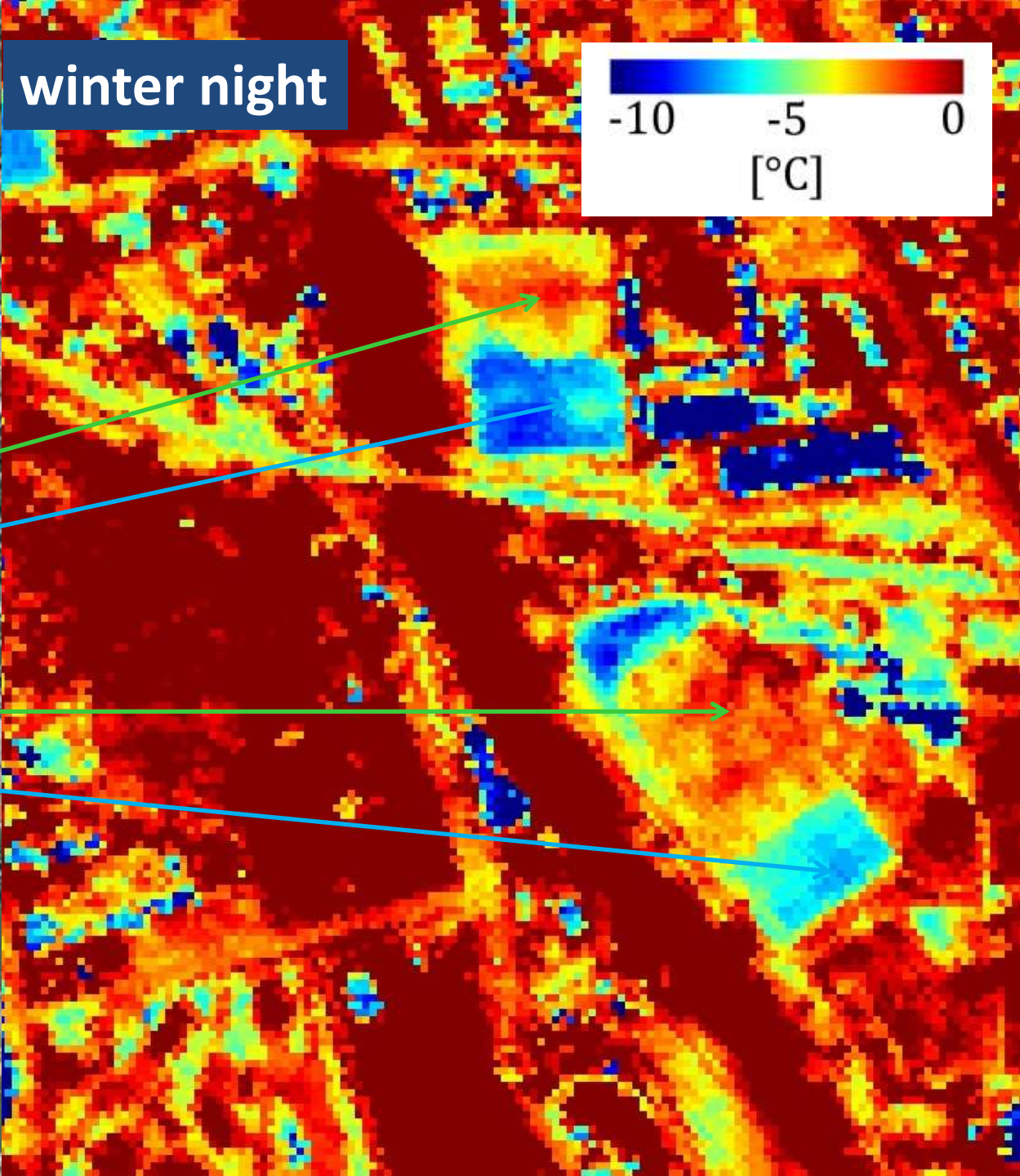
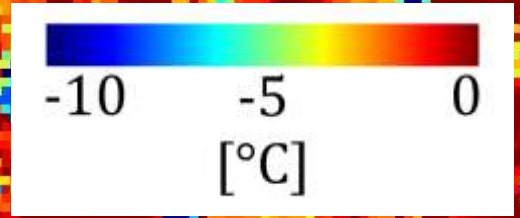


TASI – TIR, winter night



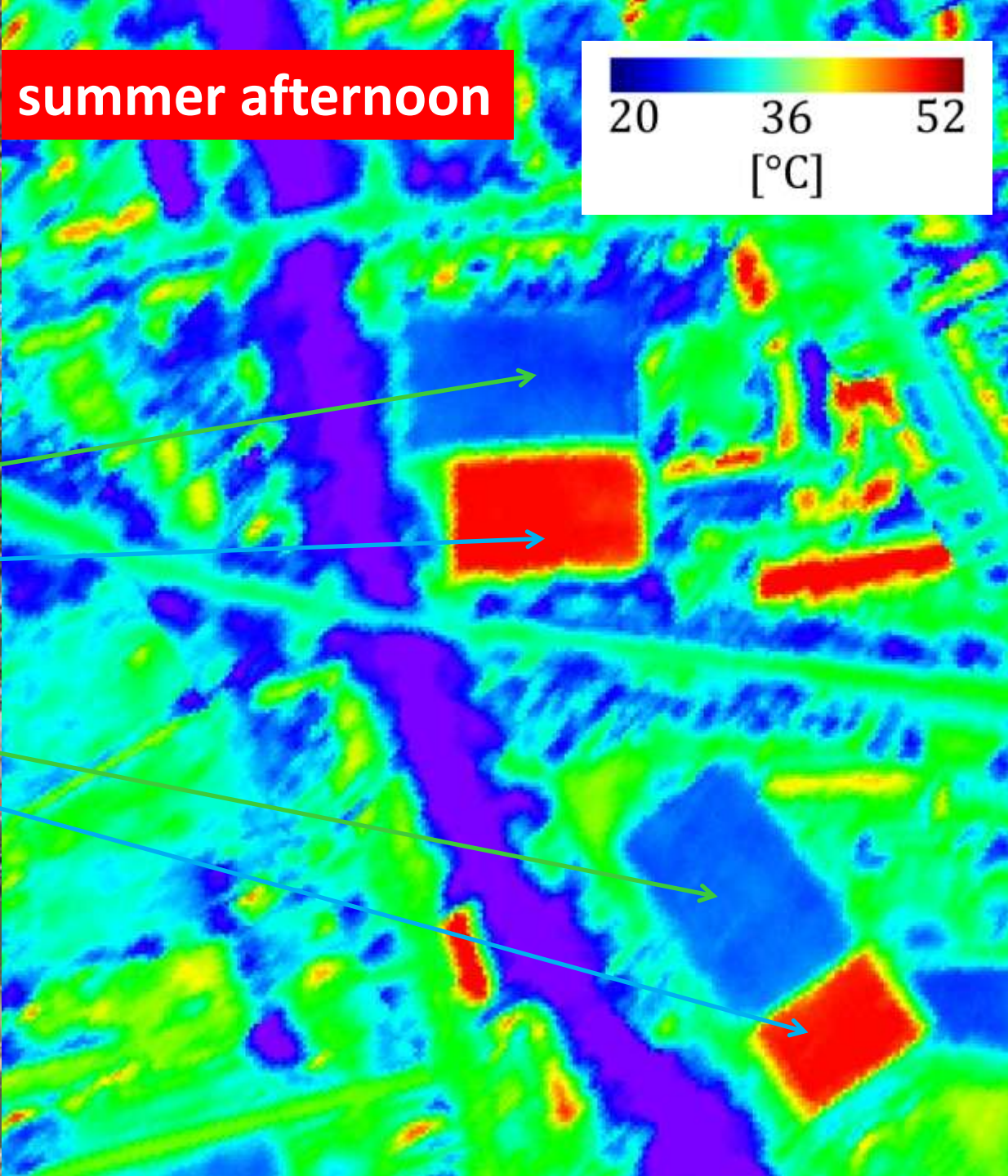
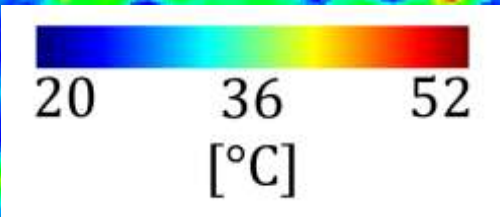


winter night

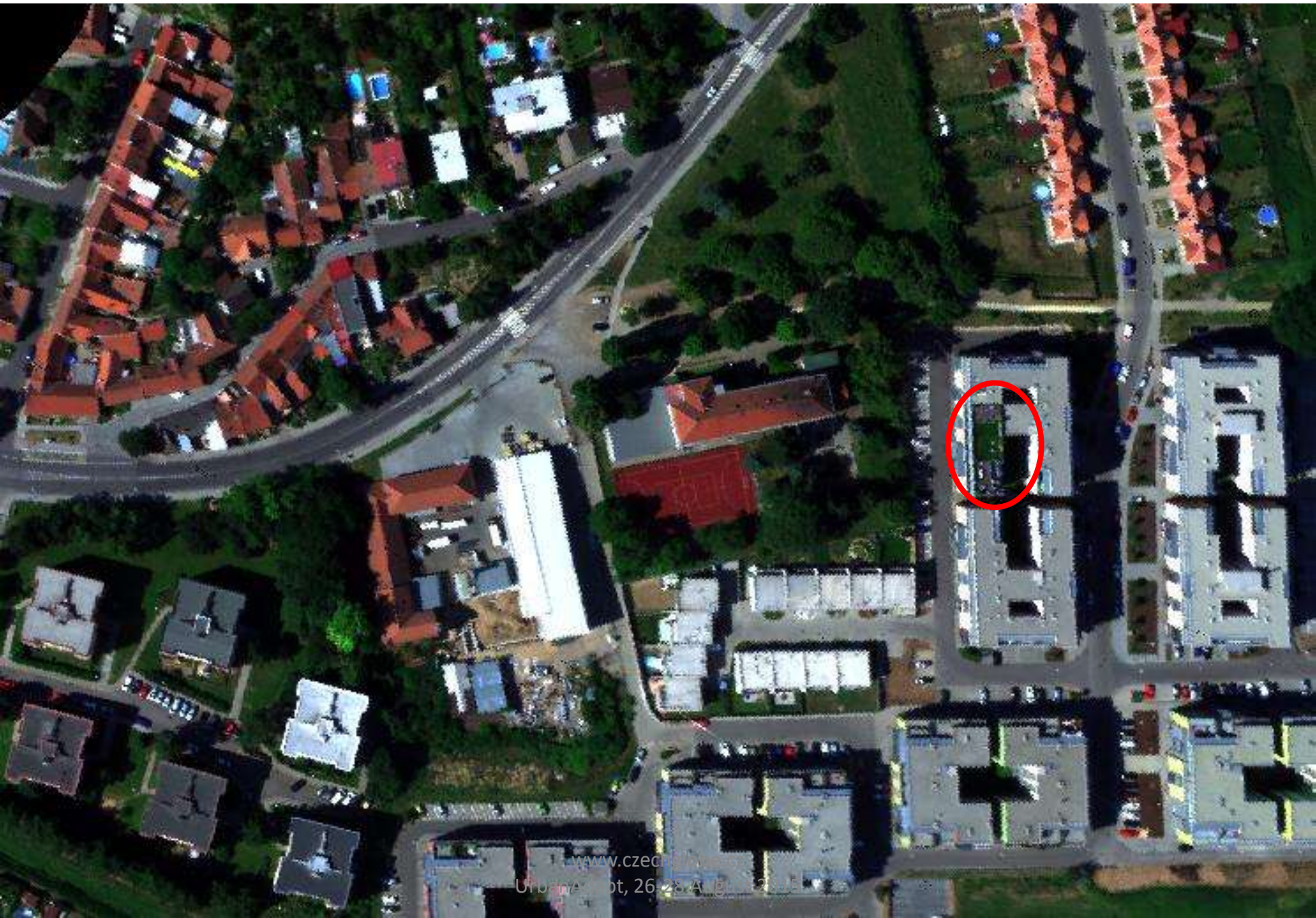




summer afternoon

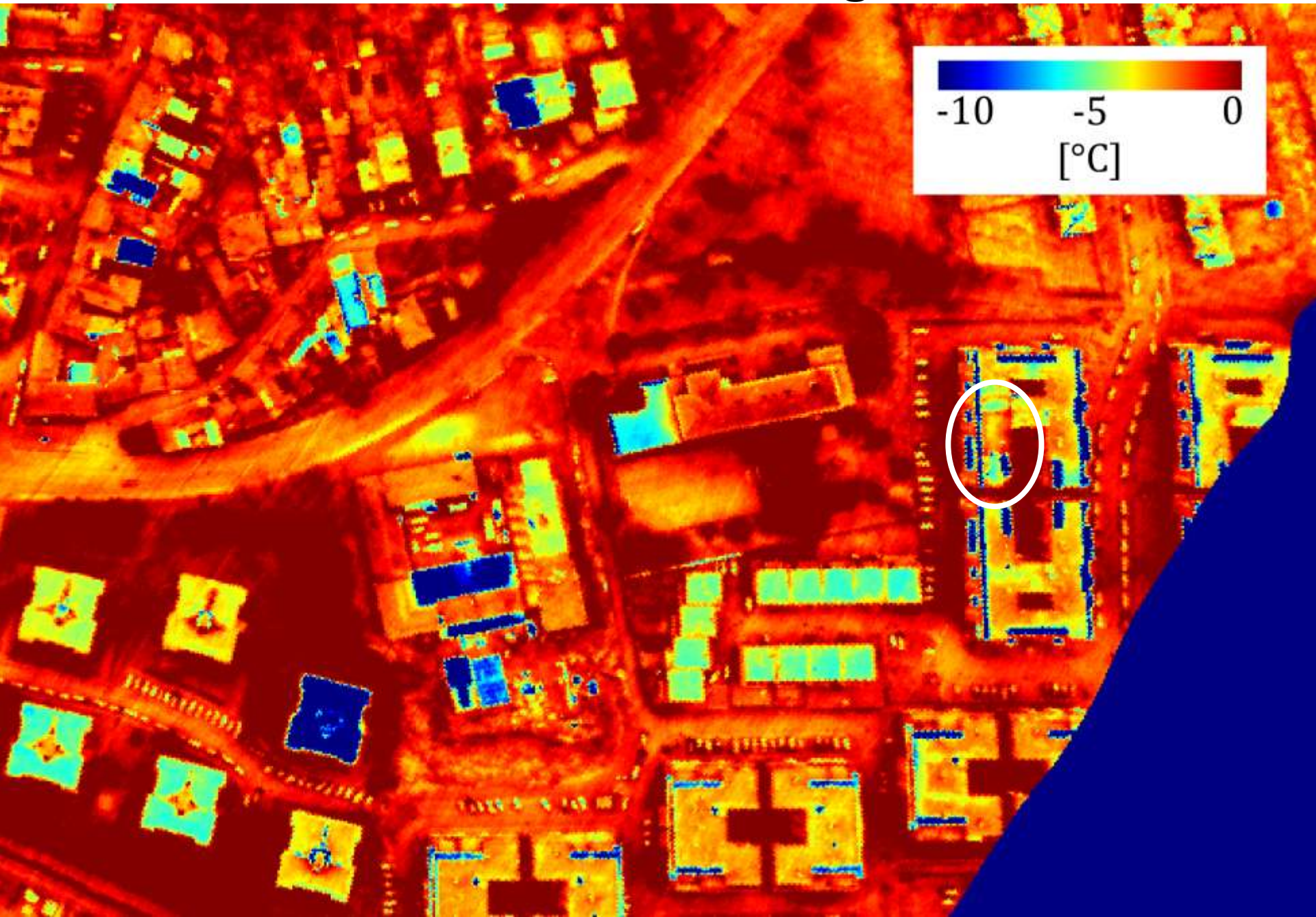


Green roof

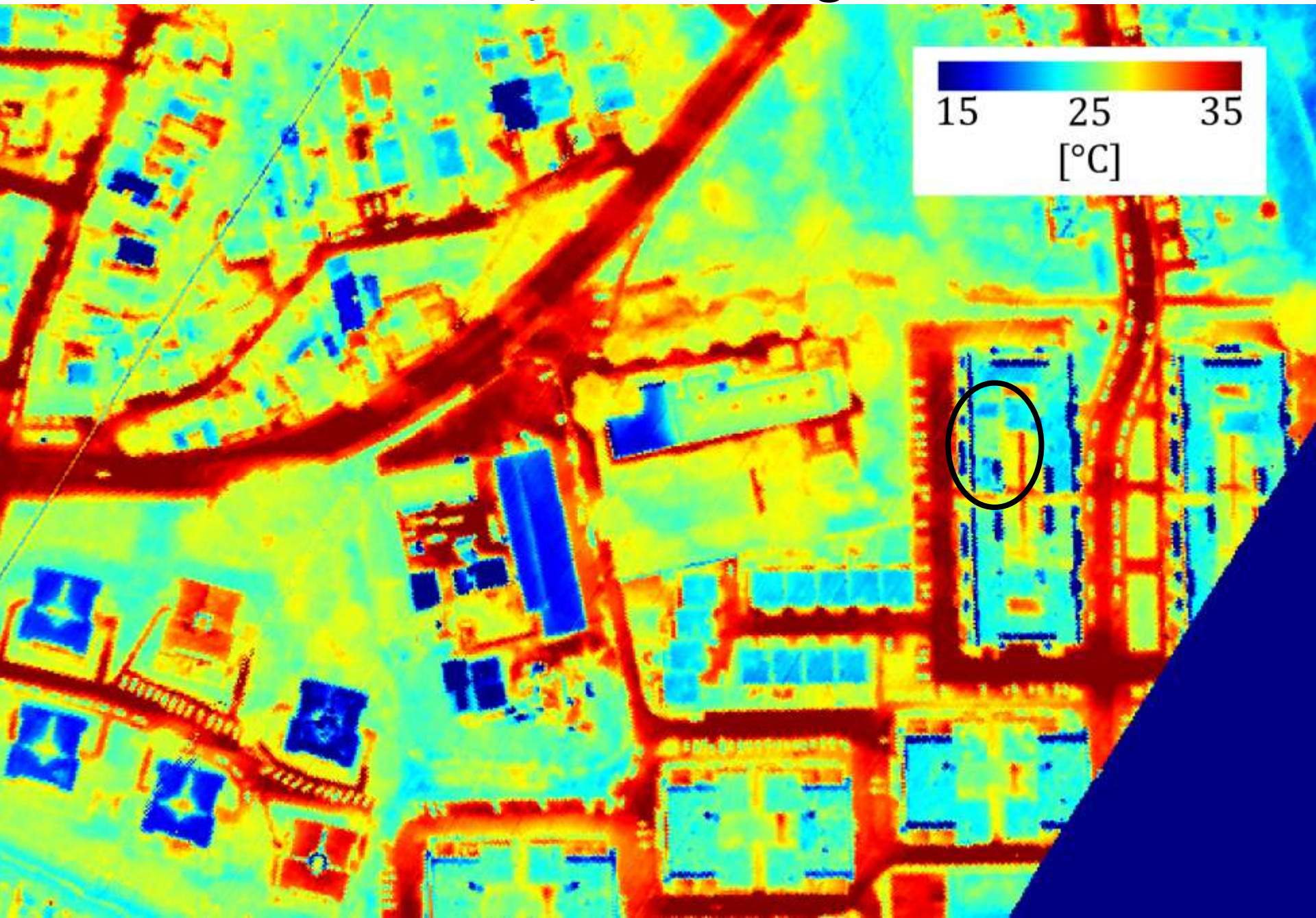




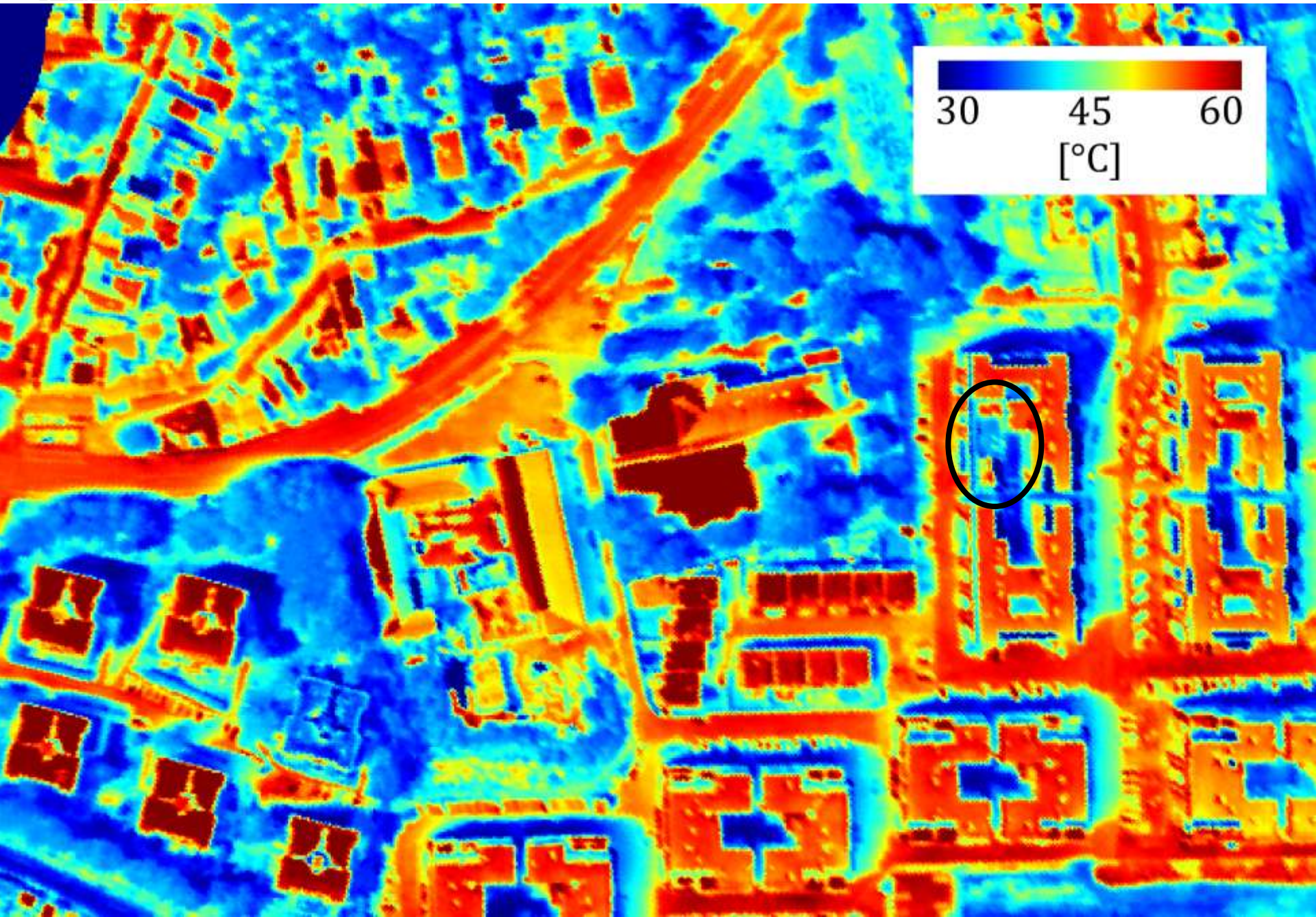
TASI – TIR, winter night



TASI – TIR, summer night



TASI – TIR, summer afternoon



CzechGlobe RS activities

Forestry

- Biochemical properties, RT modelling (HS, LiDAR)
- Biomass estimation (airborne HS, LiDAR data)

Agriculture

- Soil properties (VNIR, SWIR, TIR)
- Green biomass properties (VNIR, SWIR)

Urban

- Thermal properties – structure (airborne HS, TIR, LiDAR data)

Field and laboratory measurements: spectral properties, emissivity, temperature

More info

www.czechglobe.cz

<http://mapserver.czechglobe.cz/mapserver-en.html>



Thank you for your attention
