

Georgia – Current RS Activities

Sophiko Kenkebashvili

GIS&RS Consulting Center “GeoGraphic”, Tbilisi, Georgia



Giorgi Ghambashidze

Scientific-Research Centre of Agriculture, Tbilisi, Georgia

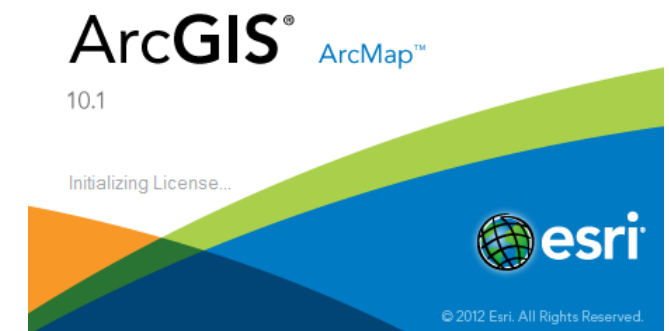


SCIENTIFIC-RESEARCH CENTRE
OF AGRICULTURE

www.srca.gov.ge

GIS&RS Consulting Center “GeoGraphic”

- Since 1998 GeoGraphic has been greatly contributing to development and utilization of modern technologies for spatial information management in Georgia.
- Since 2002 GeoGraphic is expanding area of its activities offering a wide spectrum of services:
 - Photogrammetry and Remote Sensing
 - Mapping
 - Geodatabase management
 - GIS projects implementation
 - 3D Modeling
 - Field Topo-Geodatic Survey
 - Software Development
 - Training
 - Consultancy



Land Cadaster & Land Information System Development

Project period: **2000-2004**

Aerial survey: **2000-2001**

Conducted by: **Offek, Israel**

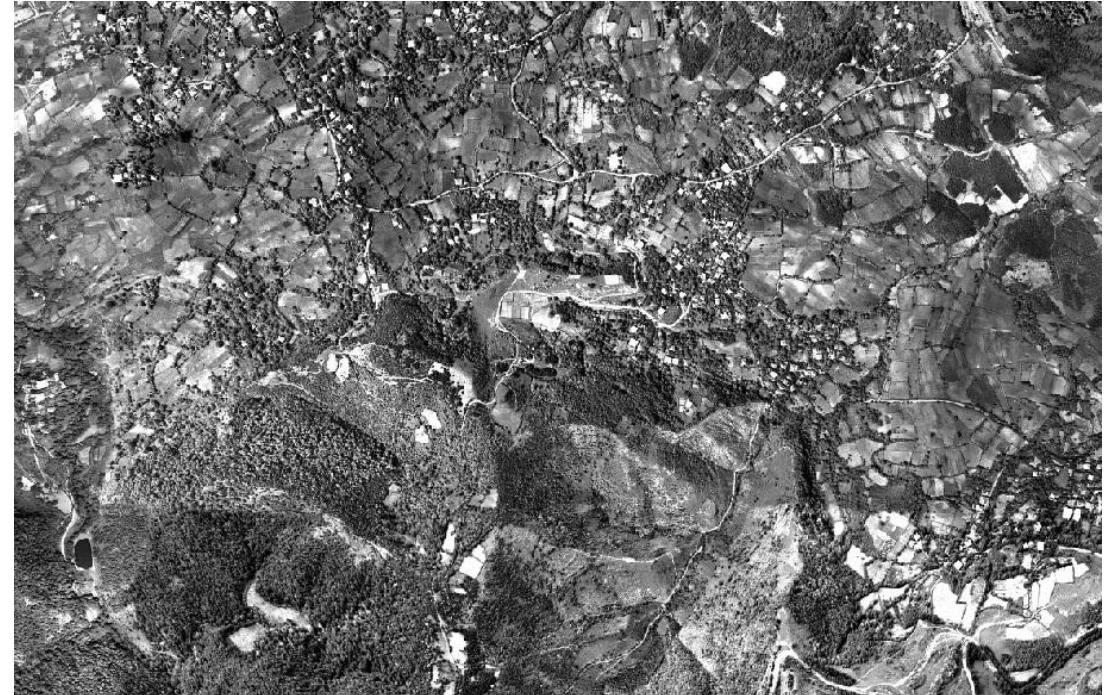
Camera type: **Analogue**

Colour: **black & white**

Scale: **1:50 000 & 1:12 000**

Pixel size in cm: **50 & 10**

Funded by: **KfW & Government of Georgia**



Land Cadaster & Land Information System Development

Project period: **2005-2010**

Aerial survey: **2005-2007; 2010**

Conducted by: **Ltd “GeoGraphic”,
Georgia**

Camera type: **Digital**

Purpose: **Forest inventory; Cadaster
update for cities**

Regions surveyed: **Whole Georgia**

Pixel size in cm: **15 & 60**



Aerial survey: 2006-2007

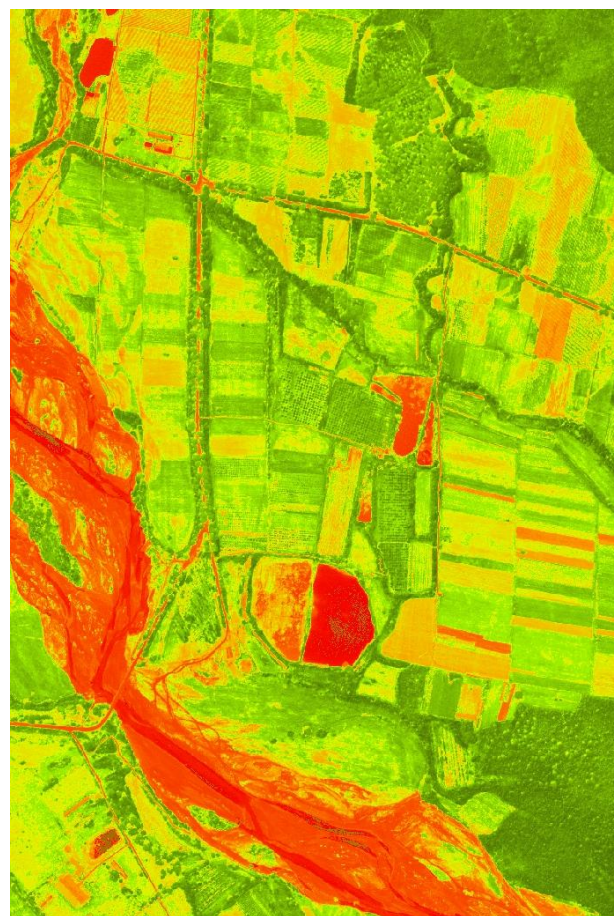
RGB



IR



NDVI



Classified



Land Cadaster & Land Information System Development

Project period: 2014

Aerial survey: 2014

Conducted by: **APEI - Aéro Photo Europe Investigation, France; Ltd “GeoGraphic”, Georgia**

Camera type: **Digital, DMC II 250-030**

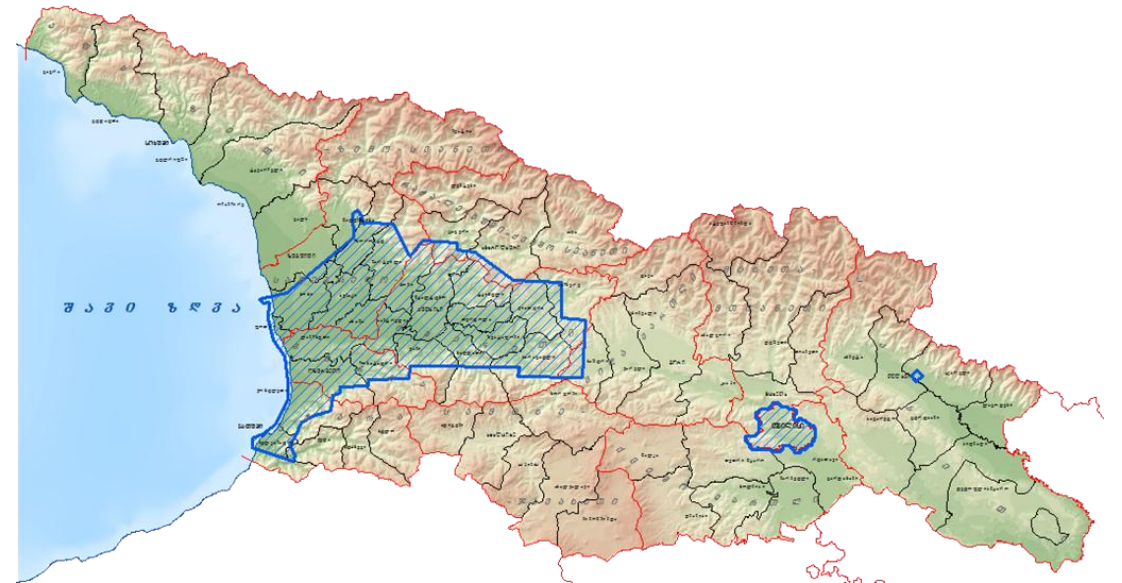
Airborne Laser Scanner: **ALS 70**

Purpose: **Urban Planning; Cadaster update for Western Georgia**

Regions surveyed: **Tbilisi; Lowlands of Western Georgia**

Pixel size in cm: **6 & 25**

Funded by: **Tbilisi Municipality; National Agency of Public Registry**

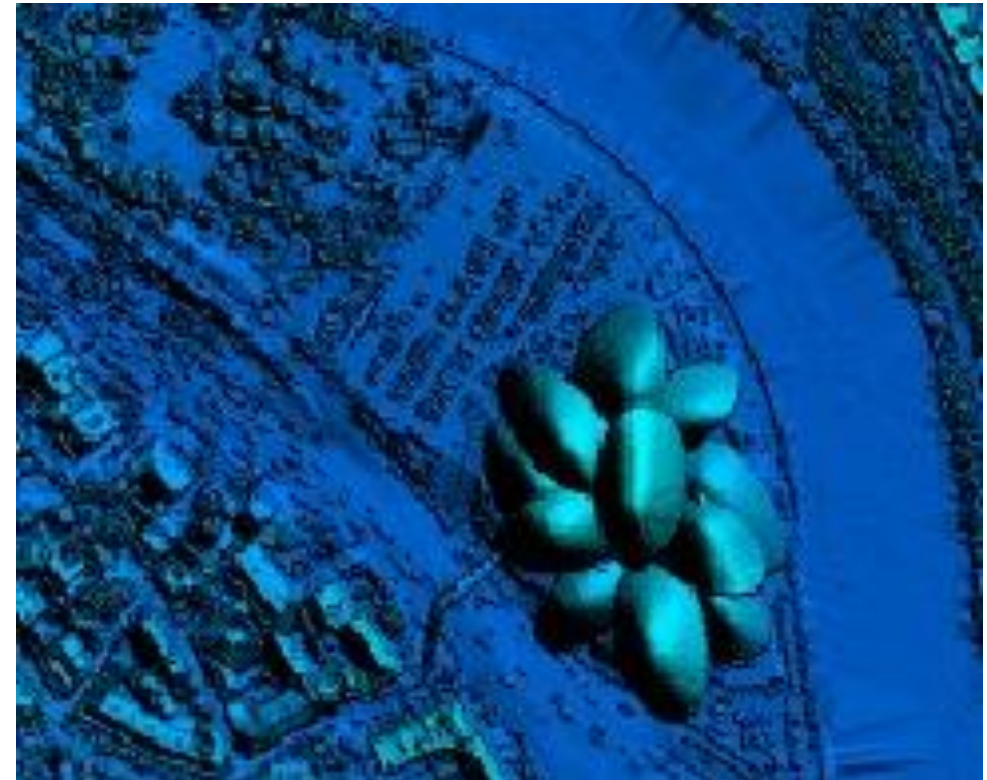


Aerial survey: 2014

Aerial photo, resolution: 6 cm

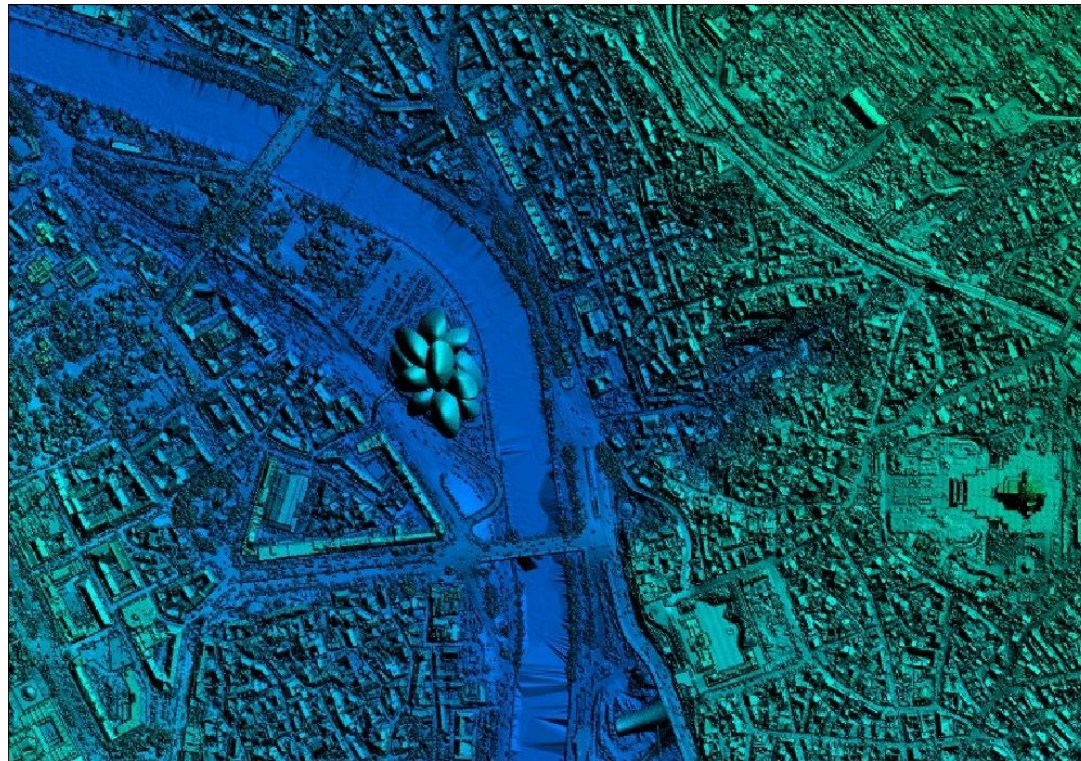


LiDAR

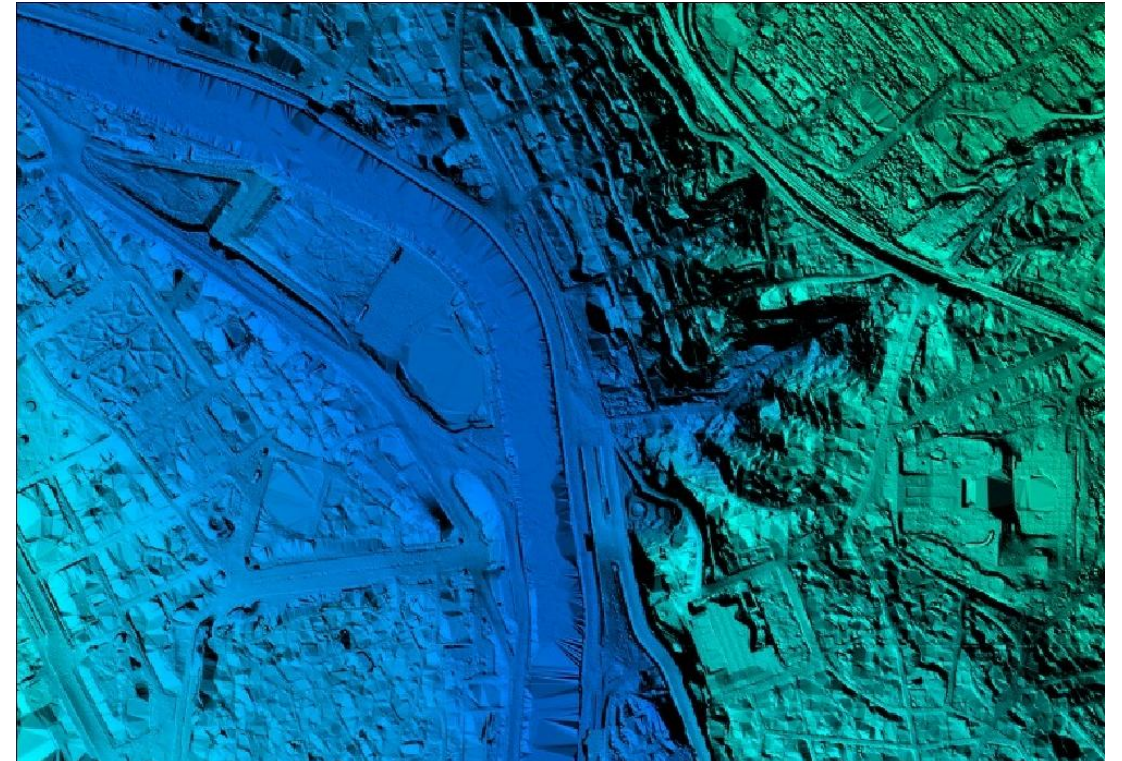


Aerial survey: 2014

LiDAR

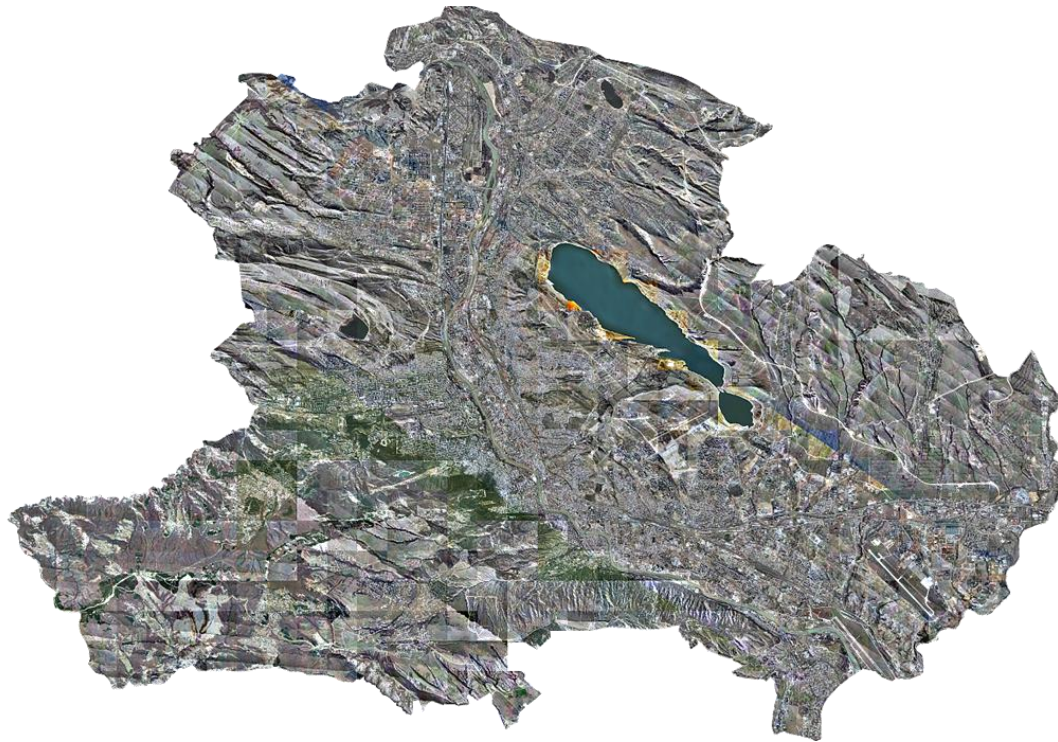


DTM

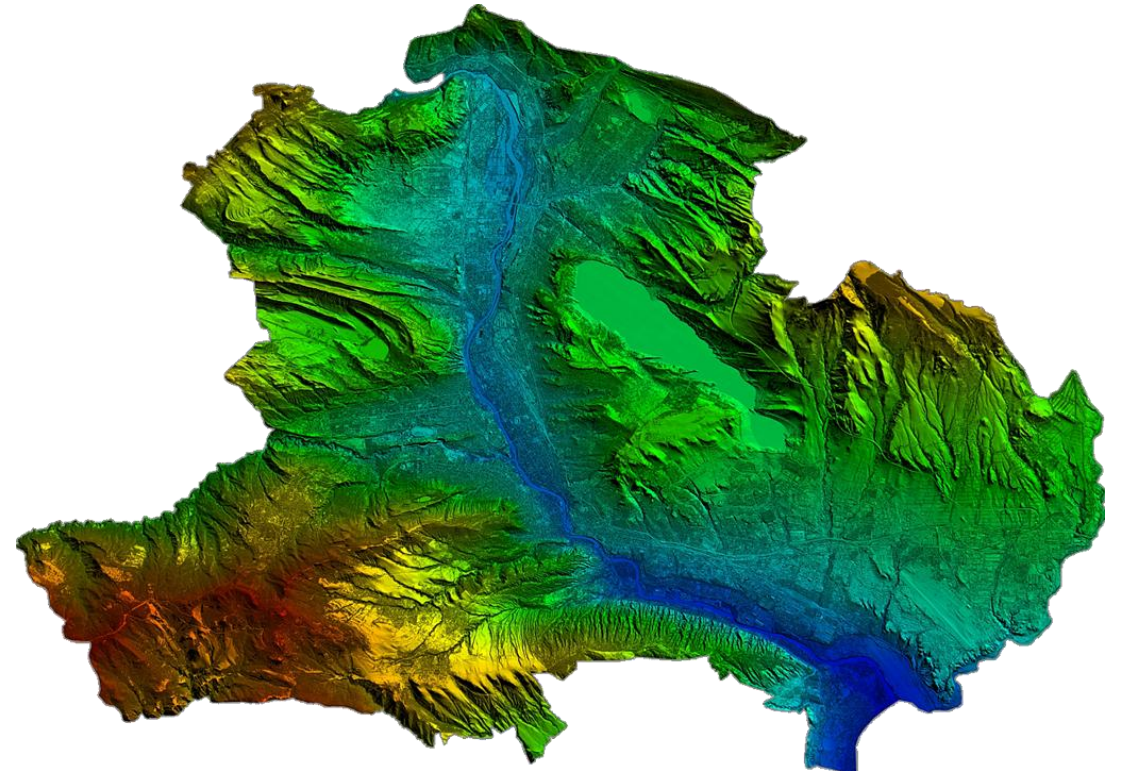


Aerial survey: 2014

**Mosaic of over 5700 aerial photos of
Tbilisi**



DTM of Tbilisi





SCIENTIFIC-RESEARCH CENTRE
OF AGRICULTURE

www.srca.gov.ge

Scientific-Research Centre of Agriculture - SRCA

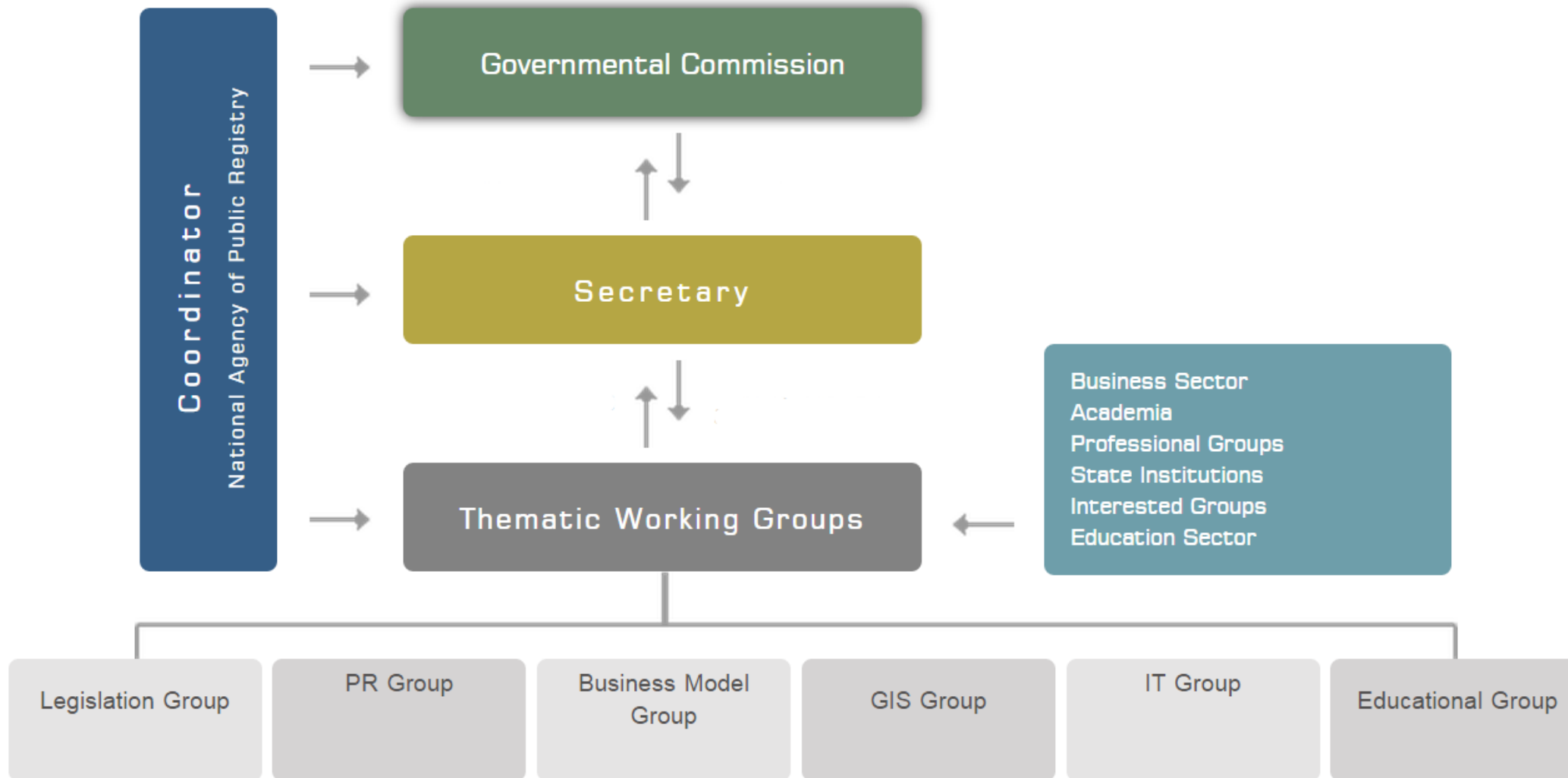
- Founded in 2014 by the Ministry of Agriculture of Georgia
 - Aim of SRCA is to support agricultural development in the country by conducting fundamental and applied research in all fields of agriculture
- Departments of SRCA
 - Department of Annual Crops Research
 - Department of Perennial Crops Research and Planting Material Production
 - Department of Integrated Plant Protection
 - Department of Animal Husbandry and Veterinary
 - Soil Fertility Research Service
 - Service of Standardization and Certification of Seed and Planting Material
 - Service of Agricultural Engineering



SCIENTIFIC-RESEARCH CENTRE
OF AGRICULTURE
www.srca.gov.ge

Project on developing National Spatial Data Infrastructure

Initiated by the government of Georgia in 2013





Project on developing National Spatial Data Infrastructure



SCIENTIFIC-RESEARCH CENTRE
OF AGRICULTURE
www.srca.gov.ge



Geo Data



Meta Data



E-Service