

SCERIN-4 2016

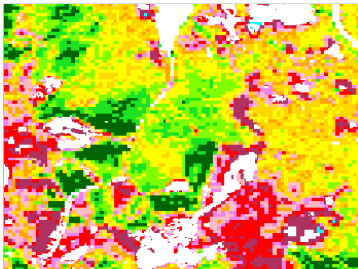
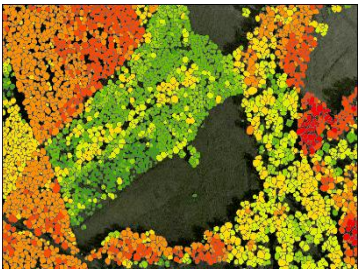
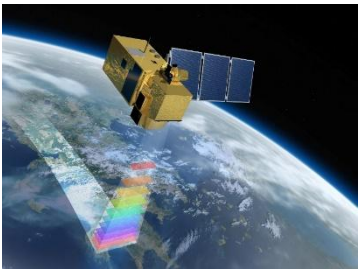
(proposed location, facility, scientific institution support and sponsorship)



**Ivan SAČKOV, Tomáš BUCHA, Ivan BARKA,
Ľuboš HALVOŇ**

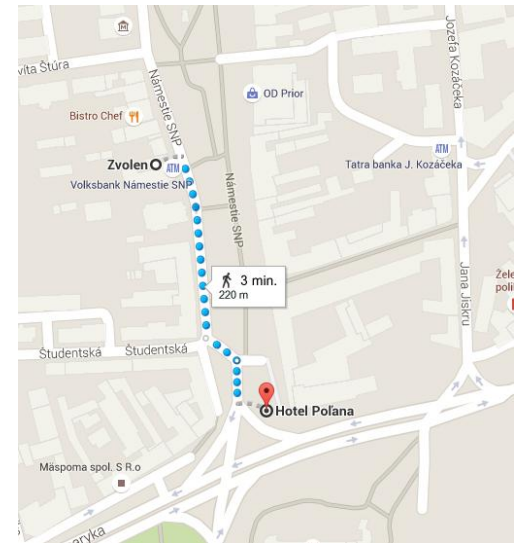
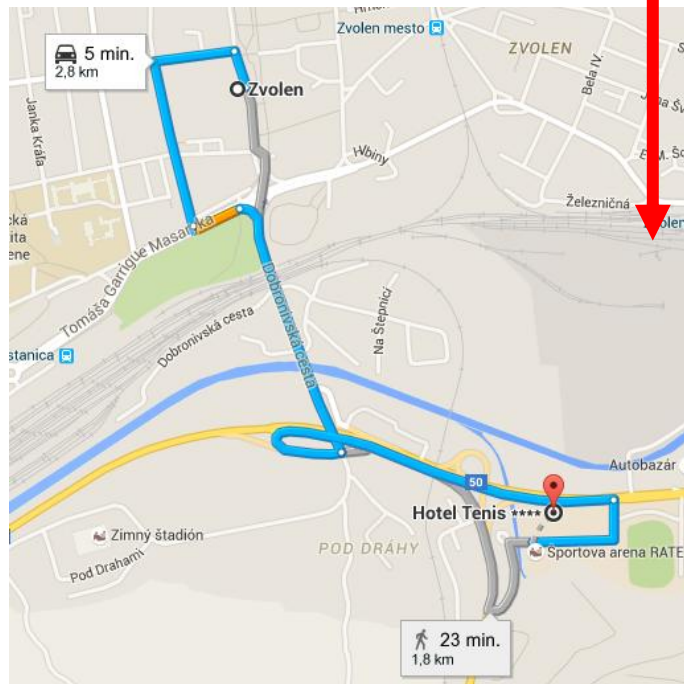
sackov@nlcsk.org

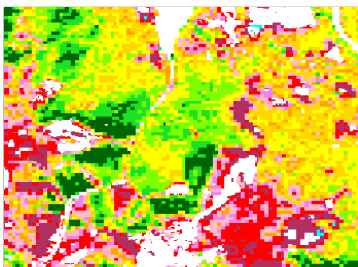
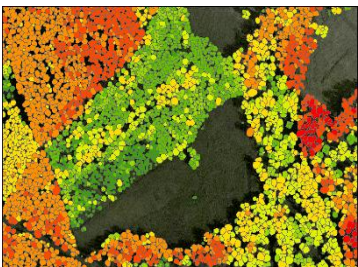
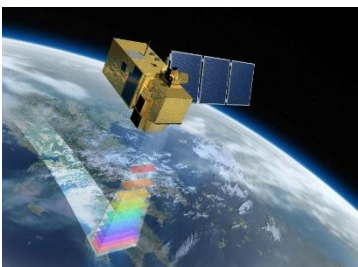
**NATIONAL FOREST CENTRE
T. G. Masaryka 22
960 92 Zvolen
Slovakia**



Proposed accommodation

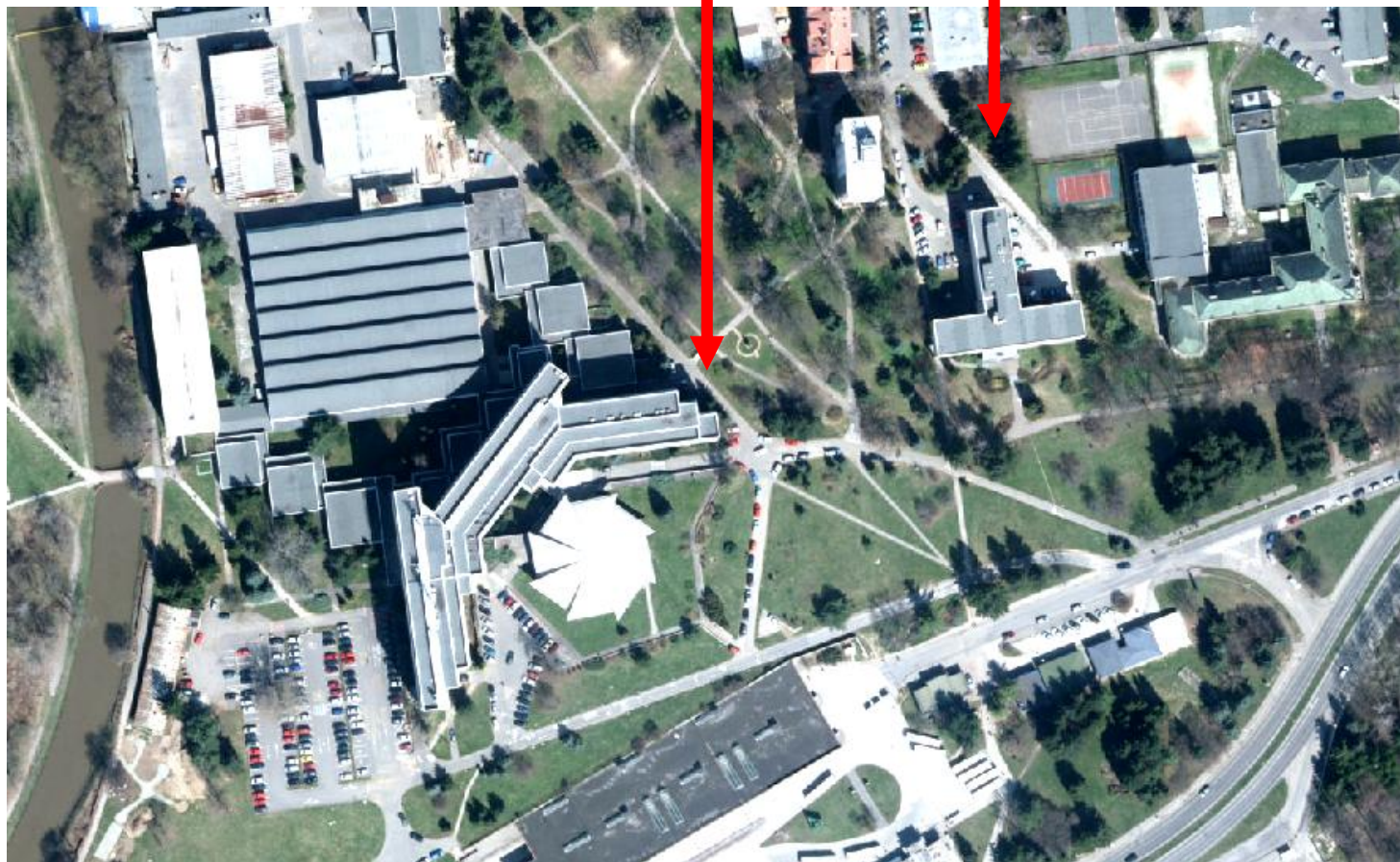
- Hotel Polana*** (<http://www.hotelpolana.sk/>)
- Hotel Tenis**** (<http://www.hoteltenis.sk/sk>)





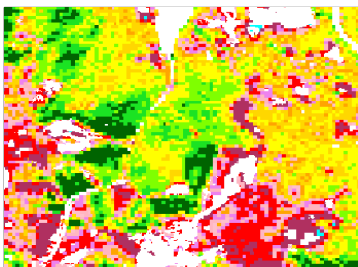
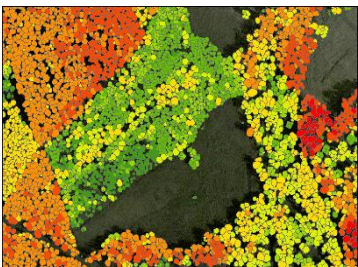
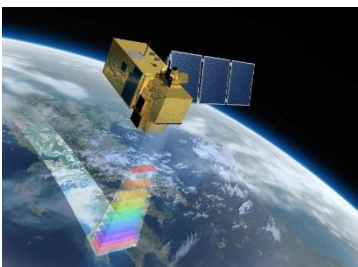
Proposed location

- National Forest Centre
- Technical university Zvolen



Facilities - meeting

- National Forest Centre (Wi-Fi available)



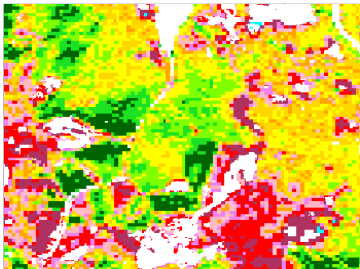
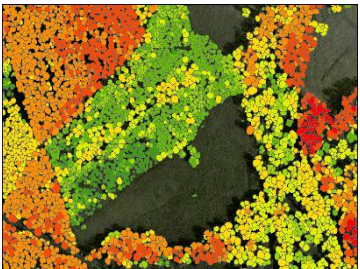
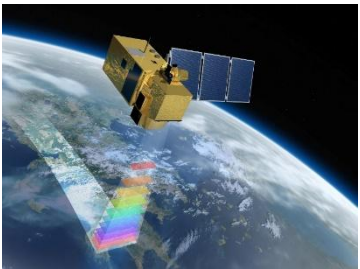
Room for coffee break



Main meetings room of NFC (60 places)

Facilities – training, lunch

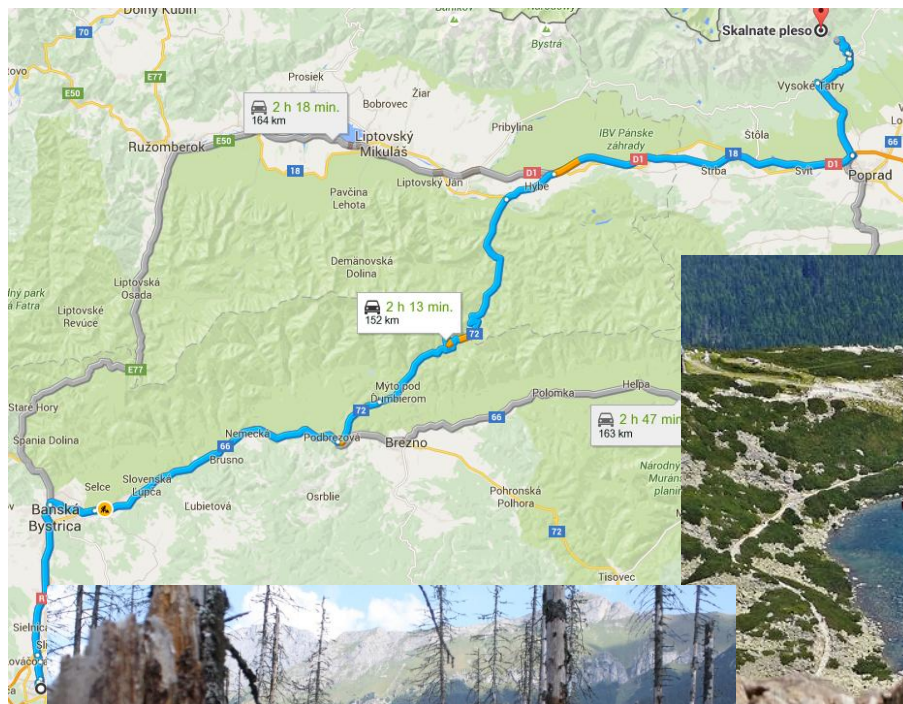
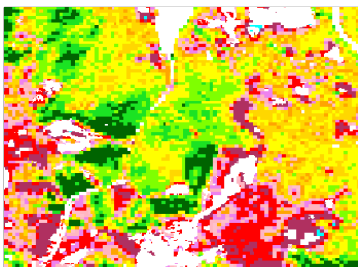
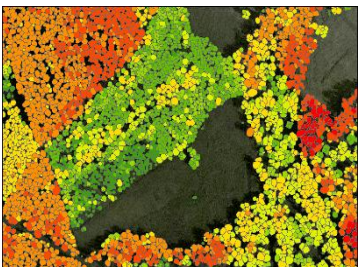
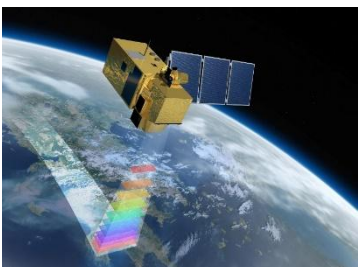
- Technical university Zvolen (Wi-Fi available)

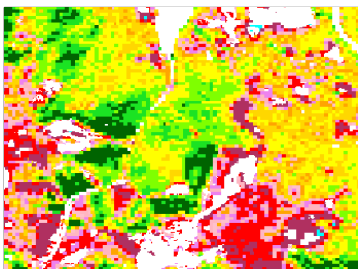
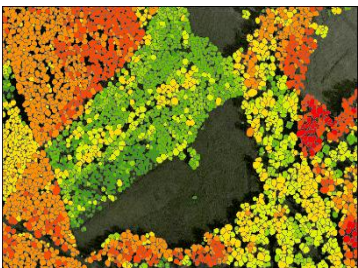
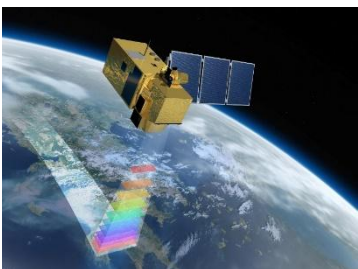


GIS laboratory (30 places); Menza (200 places)

Field trip

- To be confirmed later, e.g. High Tatra Mts. – 2 hours from Zvolen



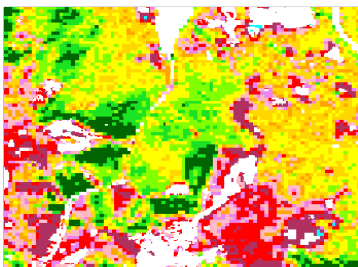
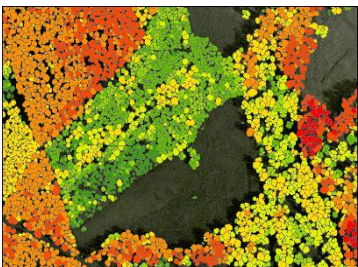
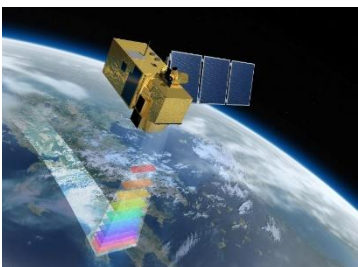


Scientific institution support and sponsorship

Shared:

- NFC (National Forest Centre),
- ILE SAS (Institute of Landscape Ecology, Slovak Academy of Sciences)
- TUZVO (Technical University, Zvolen)

- Including facilities, coffee breaks, lunch, social dinner



SCERIN-4 2016

(proposed location, facility, scientific institution support and sponsorship)



**Ivan SAČKOV, Tomáš BUCHA, Ivan BARKA,
Ľuboš HALVOŇ**

sackov@nlcsk.org

**NATIONAL FOREST CENTRE
T. G. Masaryka 22
960 92 Zvolen
Slovakia**