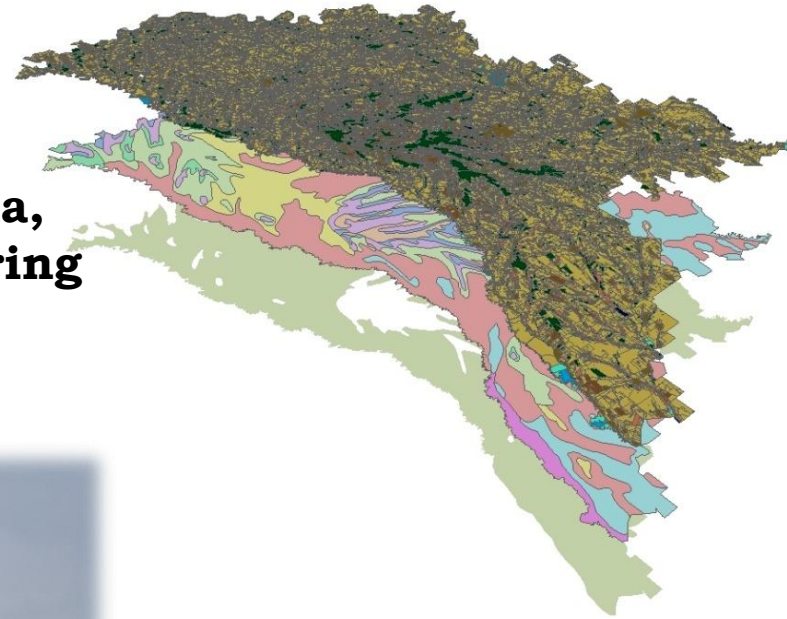


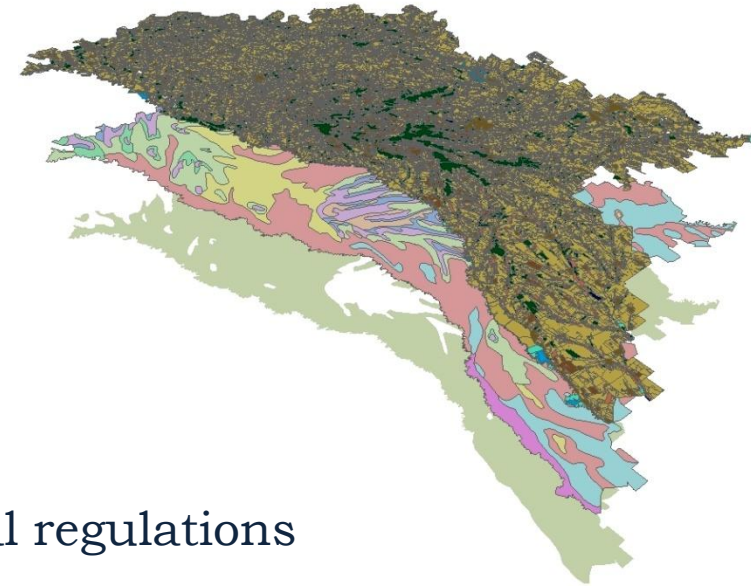
## **SCERIN-3 MEETING**

**Transilvania University of Brasov, Romania,  
Faculty of Silviculture and Forest Engineering  
13-17 July 2015**



Institute of Ecology and Geography,  
Academy of Sciences, Moldova  
Academia street nr. 1

Institute of Ecology and Geography  
Academy of Sciences  
Republic of Moldova



1. Geomorphology and Ecopedology
2. Climatology and environmental risks
3. Geography Landscape
4. Natural and anthropogenic ecosystems
5. Laboratory of Ecourbanism
6. Environmental impact and environmental regulations

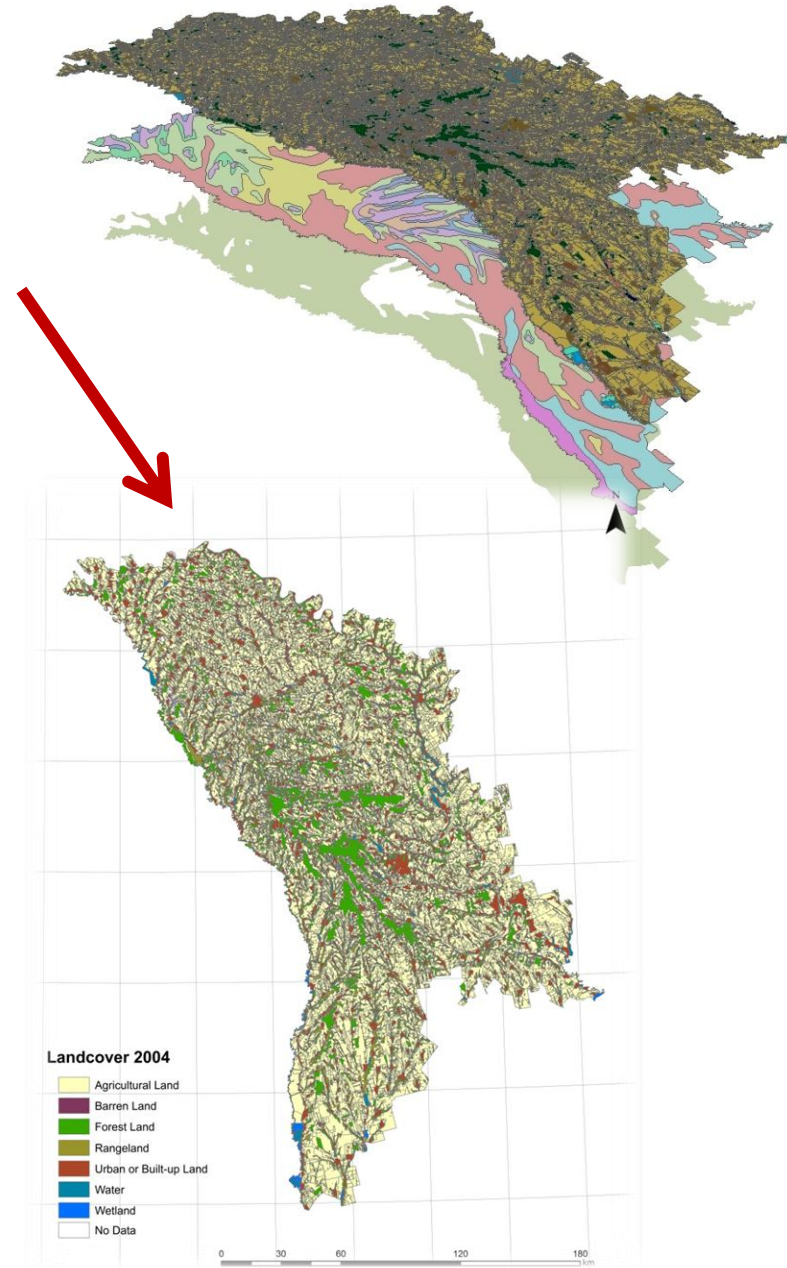
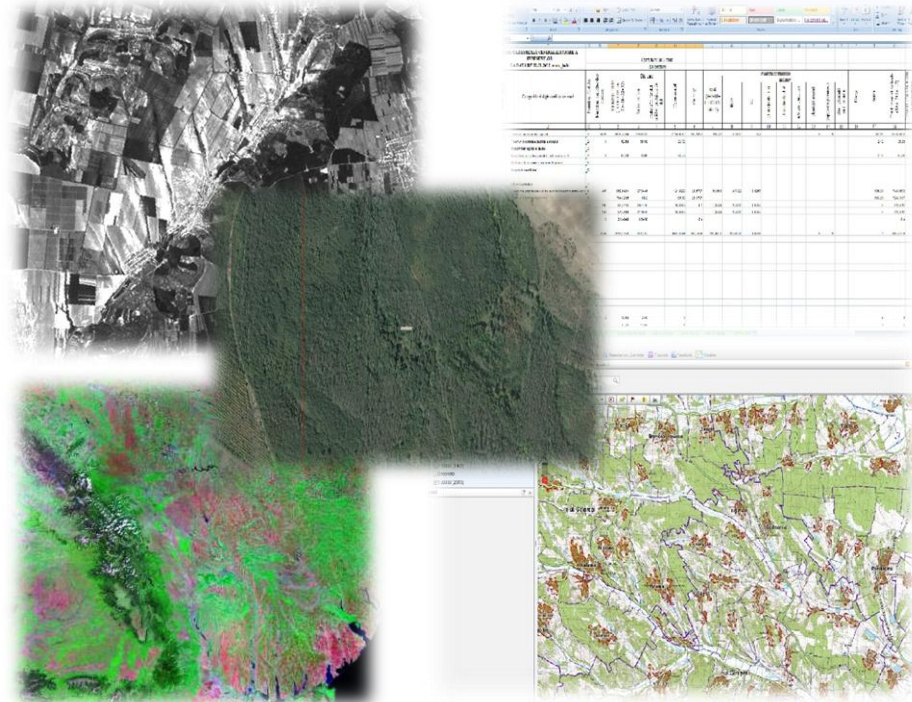
Laboratory of Geomatics - ☹



12 researchers from different institution/organization are participated in Agency of Land Relations and Cadastre

UN/FAO Training in RS Land Cover/Land Use “Building Capacity in Inventory of Land Cover/Land Use by Remote Sensing“, Chisinau, Rep.Moldova, 2004-2005

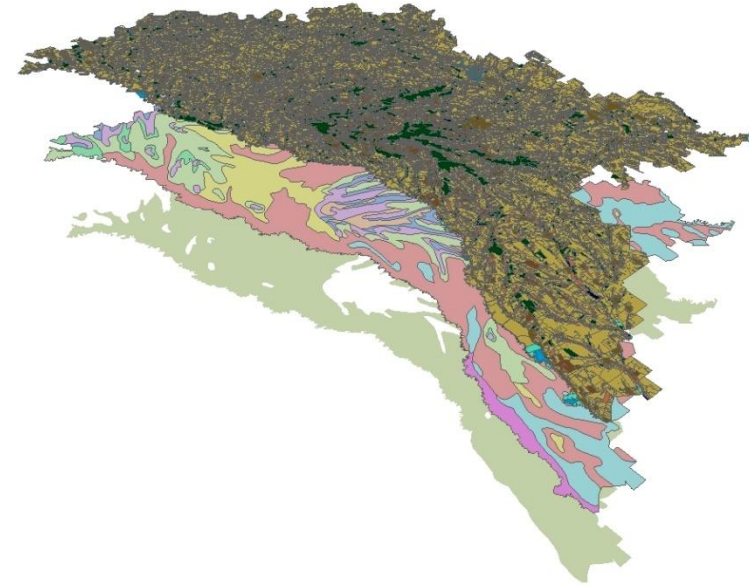
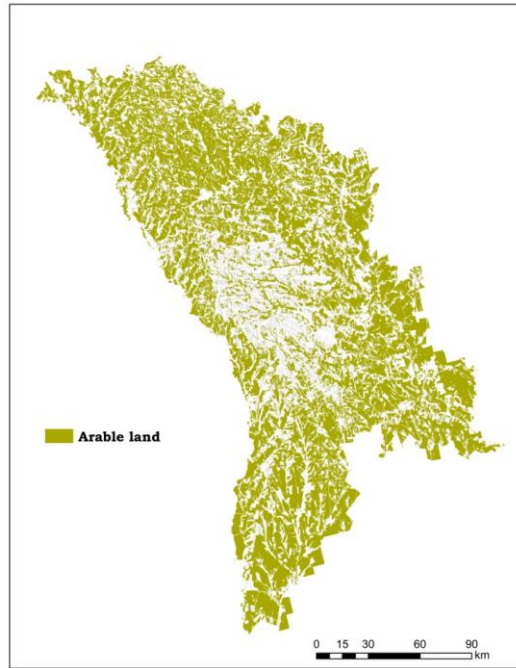
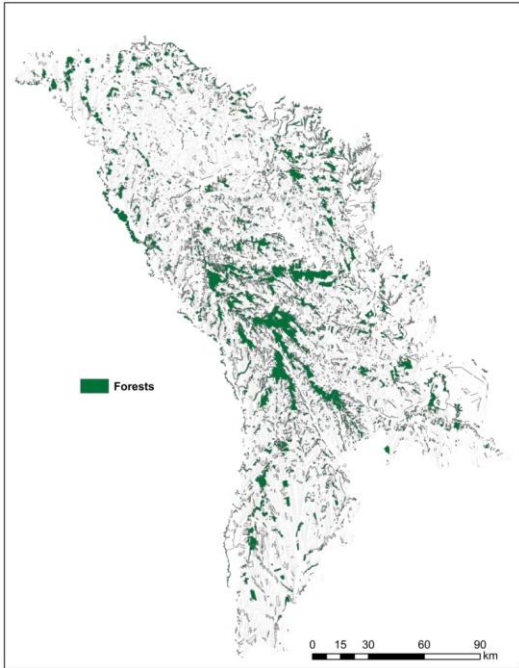
### Our database



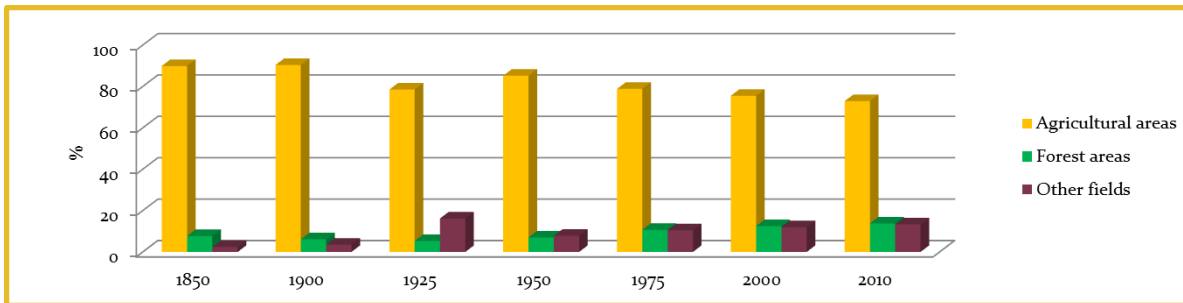
# Current focus is Land Use and Land Cover

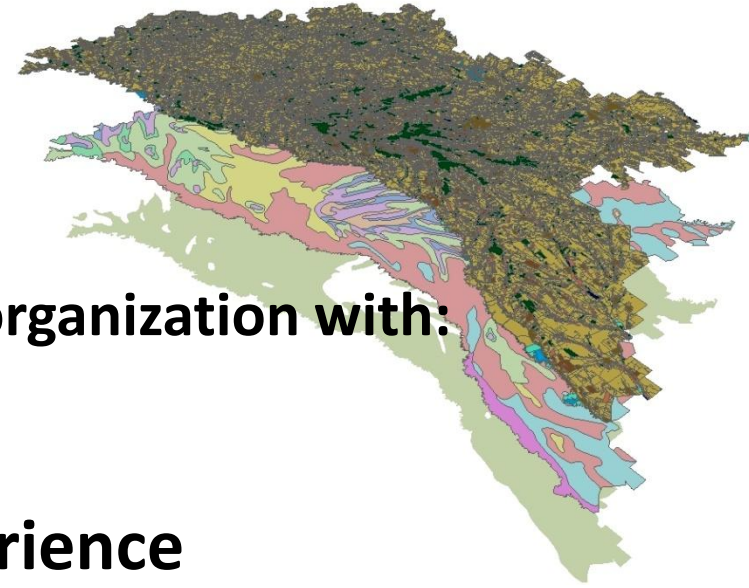
434 ths. ha = 14.3 %

1, 016 mil. ha = 30 %

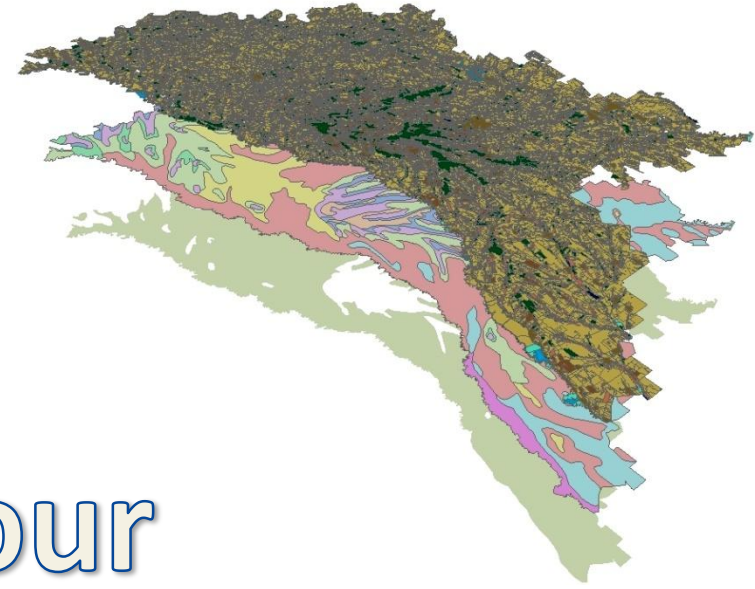


246,9 ths ha  
– abandoned land





- **SCERIN contribute to my country and organization with:**
  - **useful information about LU/LC**
  - **cooperation sharing of data experience**
  - **cooperation in developing methods for LU/LC change**
  - **developing techniques in indicators of LU/LC**
  - **Exchange of ideas in different fields**



Thanks for your  
attention!!!