

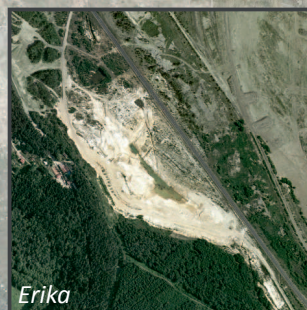
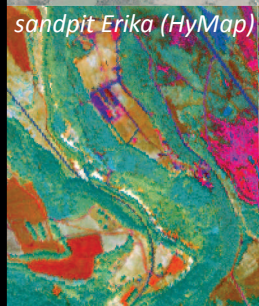


sandpit Erika



coal mine Jiří

sandpit Erika (HyMap)



Erika

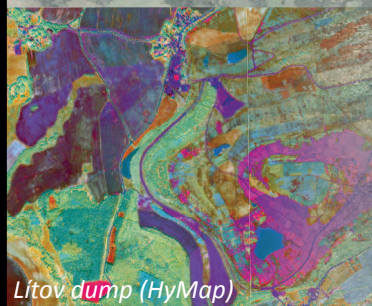
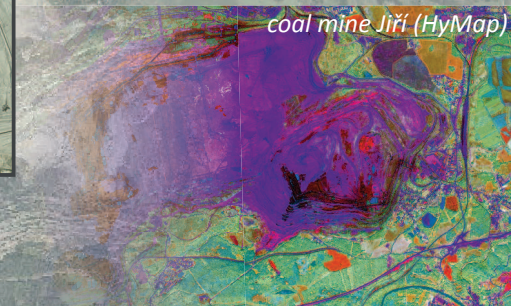
Sandpit Erika



Jiří

coal mine Jiří

coal mine Jiří (HyMap)



Lítov dump (HyMap)

Lítov dump



Lítov

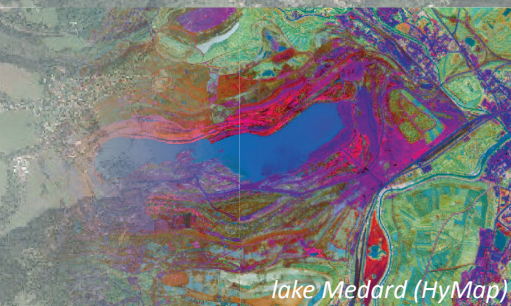
Lake Medard



Medard

Bernard-lunch

lake Medard (HyMap)



Lítov dump



lake Medard



# LCLUC in Sokolov Region in Northwestern Bohemia affected by mining activities

19.6. 2013

## Field trip guide

### coal mine Jiří

The open-cast mine Jiří is situated in the area between the towns of Sokolov and Chodov. Currently it is the only one operating coal mine in the Sokolov basin. The mining activities were initiated near Vintřov in 1981. Brown coal is excavated from the approx. 30-40 m thick coal seam Antonín and it is characterized by very low content of sulfur. The annual coal production is steadily decreasing in the last years, but still it is approx. 8 mil. tons. The excavated overburden was stored on the Podkrušnohorská výsypka dump (PVS), but since 2003 it has been filled on the inner dump. The mine Jiří currently occupies the area of approx. 2900 ha. It is going to expand eastwards until approx. 2035 when it is going to reach the legislative brown coal mining limits.



coal mine Jiří

### Lítov dump

Lítov dump is situated on the cadastral areas of Habartov, Lítov and Horní Částkov villages in the western part of the Sokolov basin. It contains approx. 200 mil. cubic meters of the mine waste material originating from the Medard-Libík coal mine, occupying the area of 720 ha. The filling of the overburden material was terminated here in 1997. The Lítov dump went under reclamation works and was mostly reclaimed by woodland. However these efforts were not successful in some parts of the area due to soil substrate phytotoxicity as the fertile soil was buried under a layer of barren and toxic tuffic clays. The presence of very acidic soils affects the hydrological regime of the small water bodies within the area which are suffering by low pH values.



Lítov dump

### lake Medard

Medard is the artificial lake located in the residual pit of the former Medard-Libík coal mine. The mining activities were terminated here in 2000 although the coal deposits have not been fully exhausted yet. The pumping of mine waste water was stopped in 2008. The lake has been filled by the water from the Ohře (Eger) river since 2010 by the artificial filling channel. The watering of the lake is going to be finished in 2013 with the planned extend of 4 x 1.5 km (493 ha) and maximal depth 50 m. Forestry and agricultural reclamation works are taking place in the neighborhood of the lake. The area is going to be used for recreation and sport activities.



lake Medard

### sandpit Erika

The sandpit Erika is located to the north of the town of Sokolov. It is formed by the Staré Sedlo formation, the oldest sedimentary unit of the Sokolov basin. The formation has an overall thickness of 20 m. The top 12 m above the groundwater level were subjected to extraction, which was terminated here in 2000. The sandpit Erika is internationally known as a locality containing fossils of Eocene flora. The area is also the appropriate place for the occurrence of amphibians like frogs, toads and newts, as well as birds (Sand Martin). For this reason no reclamation works are planned here and the area is going to be left to natural development (succession).



sandpit Erika